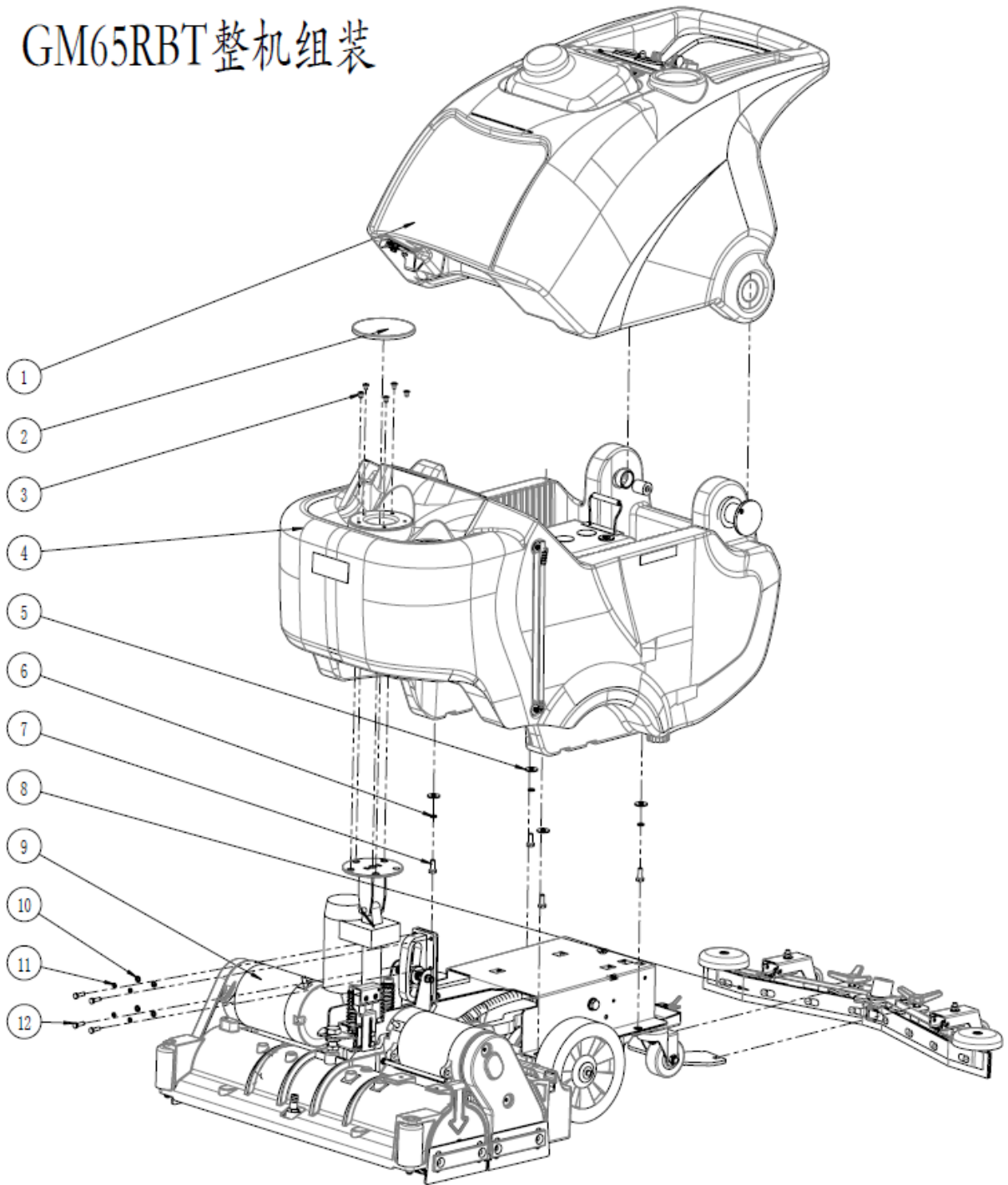


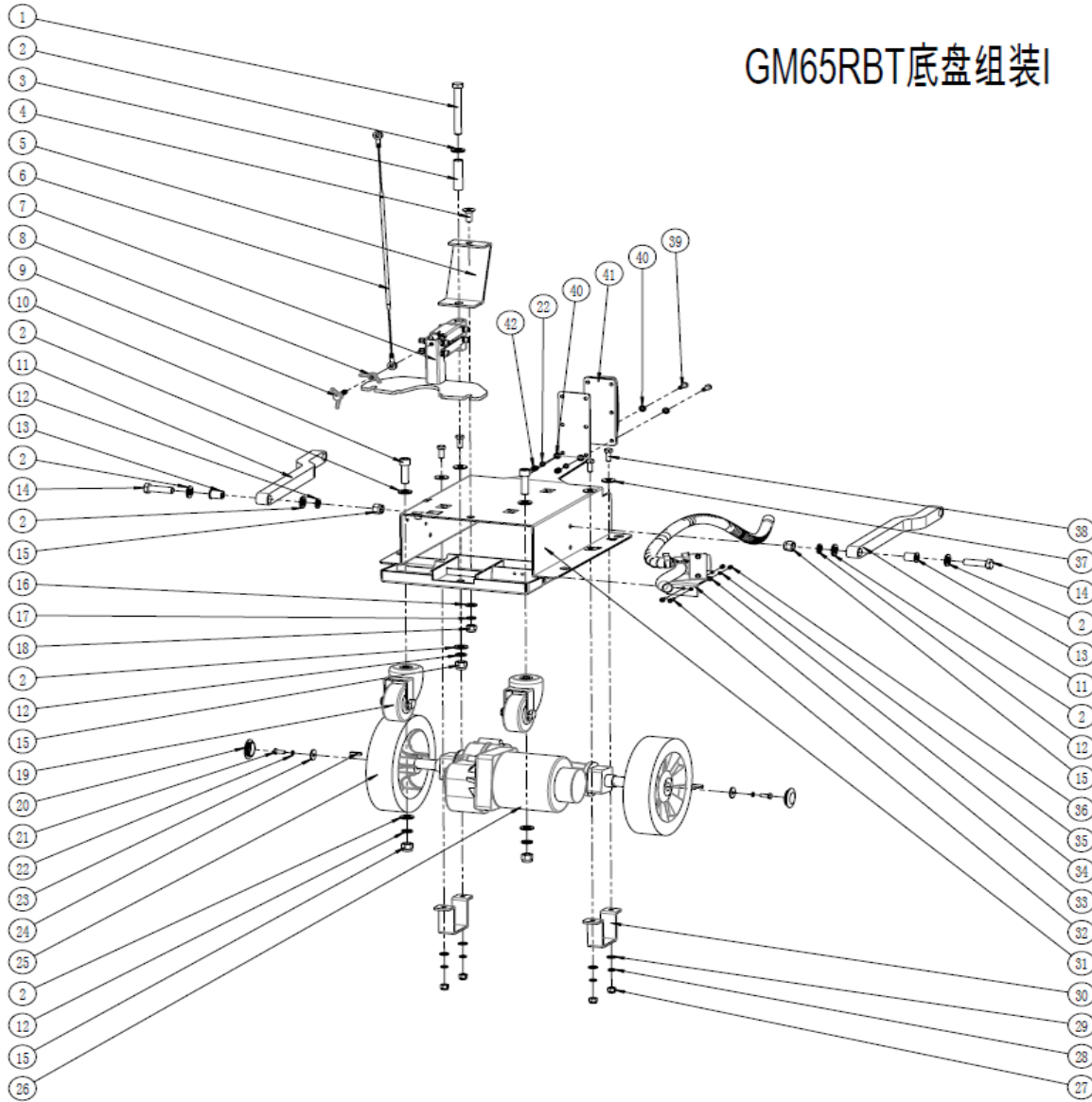
GM65RBT整机组装



Ref.	Serail NO#	Desc.	QTY
1		GM65RBT RECOVERY TANK GROUP	1
2	LJ030100276	Pushrod suspension trim cover	1
3	BZ020100093	M6*10 Countersunk head hex socket	5
4		GM65RBT SOLUTION TANK GROUP	1
5	BZ020300010	M8 Large flat mat	4
6	BZ020400005	M8 Spring washer	4
7	BZ020100063	M8*20 Hex screw	4
8	BC05006006	Squeegee Assembly	1
9		GM65RBT Roller brush group	1
10	BZ020300006	M6 Flat mat	4
11	BZ020400004	M6 Spring washer	4
12	BZ020100034	M6*20 Hex screw	4

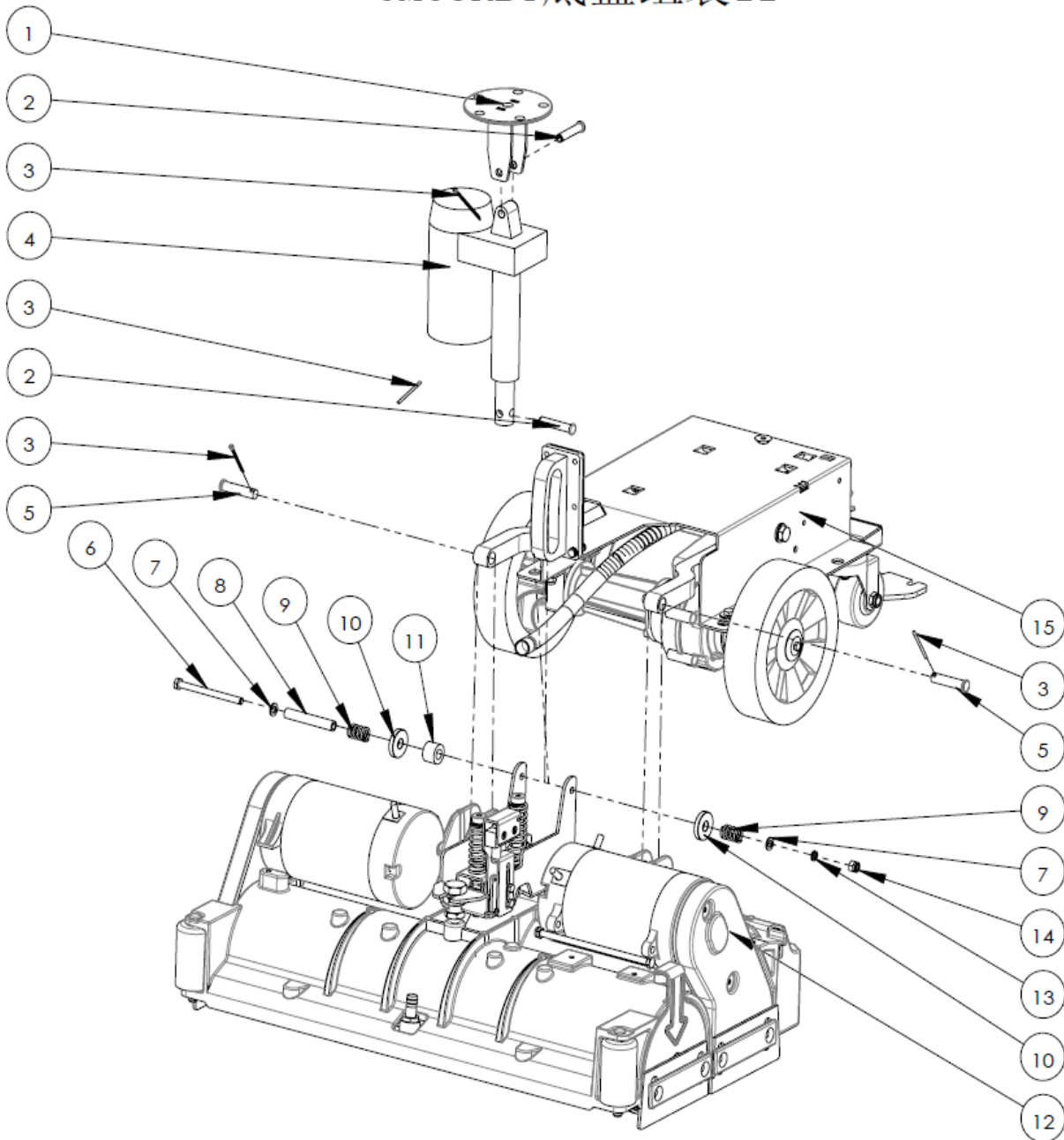
FRAME GROUP II (BASE)

GM65RBT底盘组装I



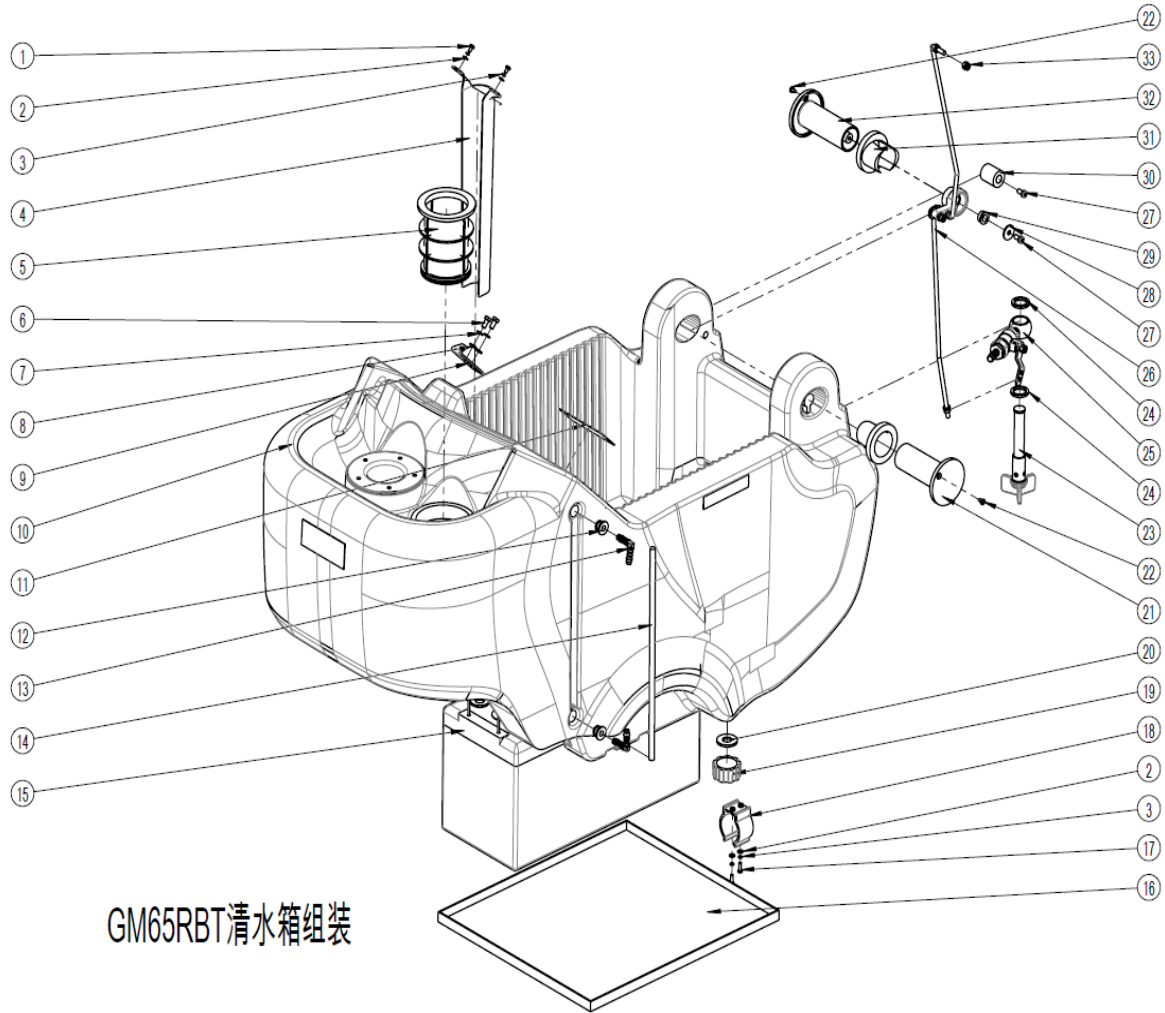
Ref.	Serail NO#	Desc.	QTY	Ref.	Serail NO#	Desc.	QTY
1	BZ020100069	M12*100 Hex screw (Length 25mm)	1	22	BZ020400004	M6 Spring washer	4
2	BZ020300013	M12 Flat mat (stainless steel)	10	23	BZ020300008	M6 Extra large flat mat	2
3	LJ010500012	GM50B Squeegee guiding connection copp	1	24	BZ130100004	Casters pin 5*5*40mm	2
4	BZ020100066	M10*25 Flat head hex socket screw	1	25	LJ030200160	70BT Die-cast aluminum alloy rear wheel	2
5	LJ010100405	50B Tail wheel support board	1	26	LJ040100051	GM70BT Drive motor (new)	1
6	BZ110100002	GM70BT Squeegee bracket lift wiredrawing	1	27	BZ020200011	M8 Self-locking nut	4
7	BC05018017	Squeegee bracket assembly	1	28	BZ020400005	M8 Spring washer	4
8	BZ020200012	M8 Claw nut	1	29	BZ020300009	M8 Flat mat	4
9	BZ020100071	M8*30 Claw screw	1	30	LJ010100480	GM56BT U type retainer (new)	2
10	BZ020100218	M12*40 Hex socket (201 stainless steel)	2	31	LJ010100432	GM-65RBT Main frame base	1
11	LJ010200343	GM-65RBT Motor connection level	2	32	BZ020100006	M4*16 Big pan head cross screw	2
12	BZ020400013	M12 Spring washer(stainless steel)	5	33	BC05024008	65RBT solenoid valve assembly	1
13	LJ010400028	Roller brush head connector copper bush	2	34	BZ020300002	M4 Flat mat	2
14	BZ020100223	M12*45 hex screw	2	35	BZ020400002	M4 Spring washer	2
15	BZ020200016	M12 Self-locking nut	5	36	BZ020200004	M4 Self-locking nut	2
16	BZ020300012	M10 Flat mat	1	37	BZ020300010	M8 Large flat mat	4
17	BZ020400006	M10 Spring washer	1	38	BZ020100063	M8*20 Hex screw	4
18	BZ020200014	M10 Self-locking nut	1	39	BZ020100034	M6*20 Hex screw	2
19	BZ080100001	GM50B Squeegee caster (Universal)	2	40	BZ020300006	M6 Flat mat	4
20	LJ030100191	70BT Die-cast aluminum alloy wheel hub cover (red)	2	41	LJ010200342	GM-65RBT Brush head guide rails	1
21	BZ020100035	M6*16 Hex screw 304 stainless steel	2	42	BZ020200009	M6 Self-locking nut	2

GM65RBT底盘组装II



Ref.	Serail NO#	Desc.	QTY
1	LJ010100431	Pushrod suspension welds	1
2	BZ160100023	Pin C9X50	2
3	BZ160100024	Open pin C3.2X45	4
4	LJ090100325	Roller pushrod wire harness	1
5	BZ160100026	Pin C12X50	2
6	BZ020100208	M8*100 Hex screw	1
7	BZ020300009	M8 Flat mat	2
8	LJ010200334	Roller guide wheel sleeve	1
9	LJ010300052	Roller guide wheel spring	2
10	LJ010400027	33x6.5 Copper pad	2
11	LJ030100246	Roller guide wheel	1
12	BC05024005	650 Roller brush assembly	1
13	BZ020400005	M8 Spring washer	1
14	BZ020200011	M8 Self-locking nut	1
15	LJ010100432	GM-65RBT Main frame base	1

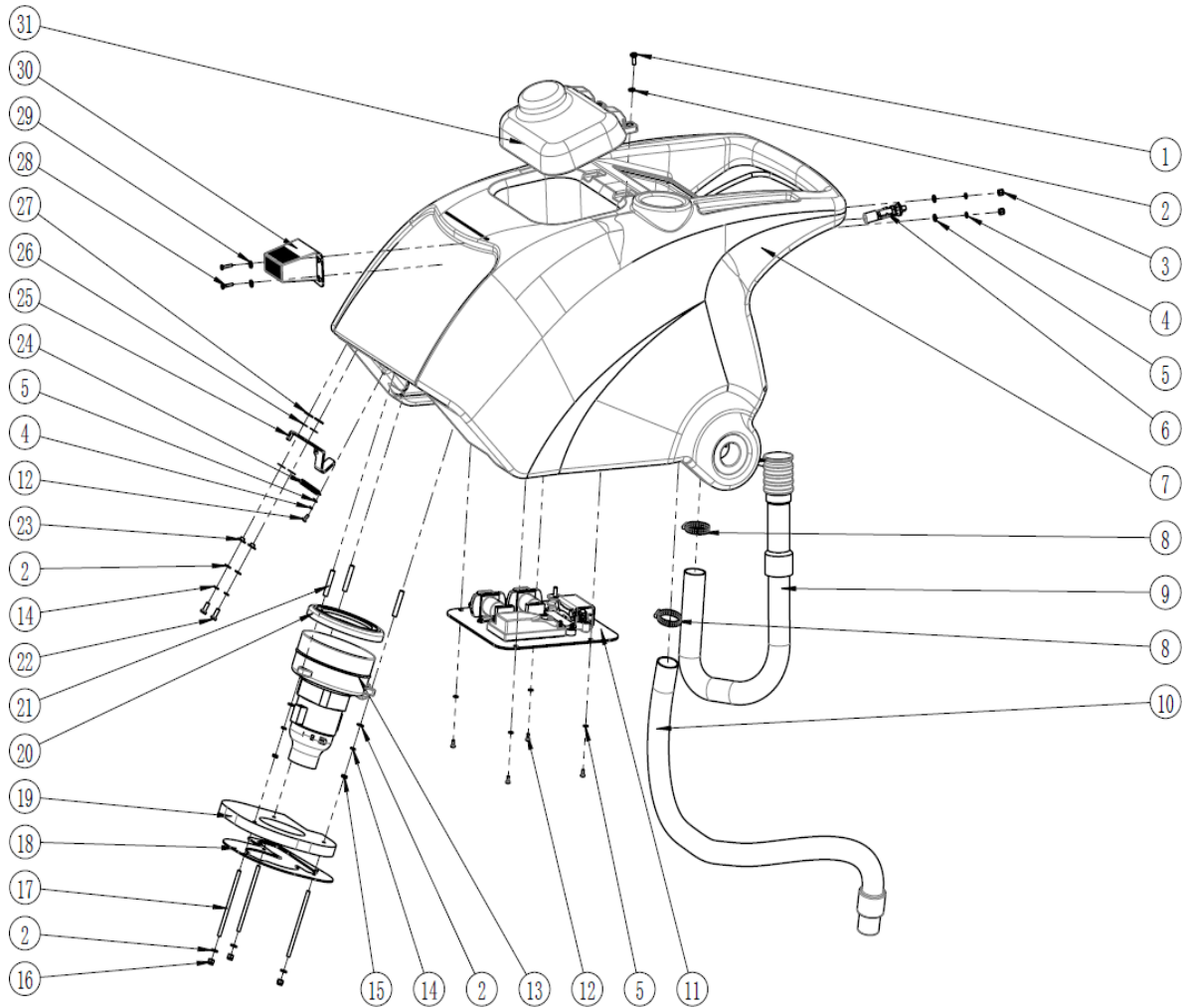
SOLUTION TANK GROUP



GM65RBT清水箱组装

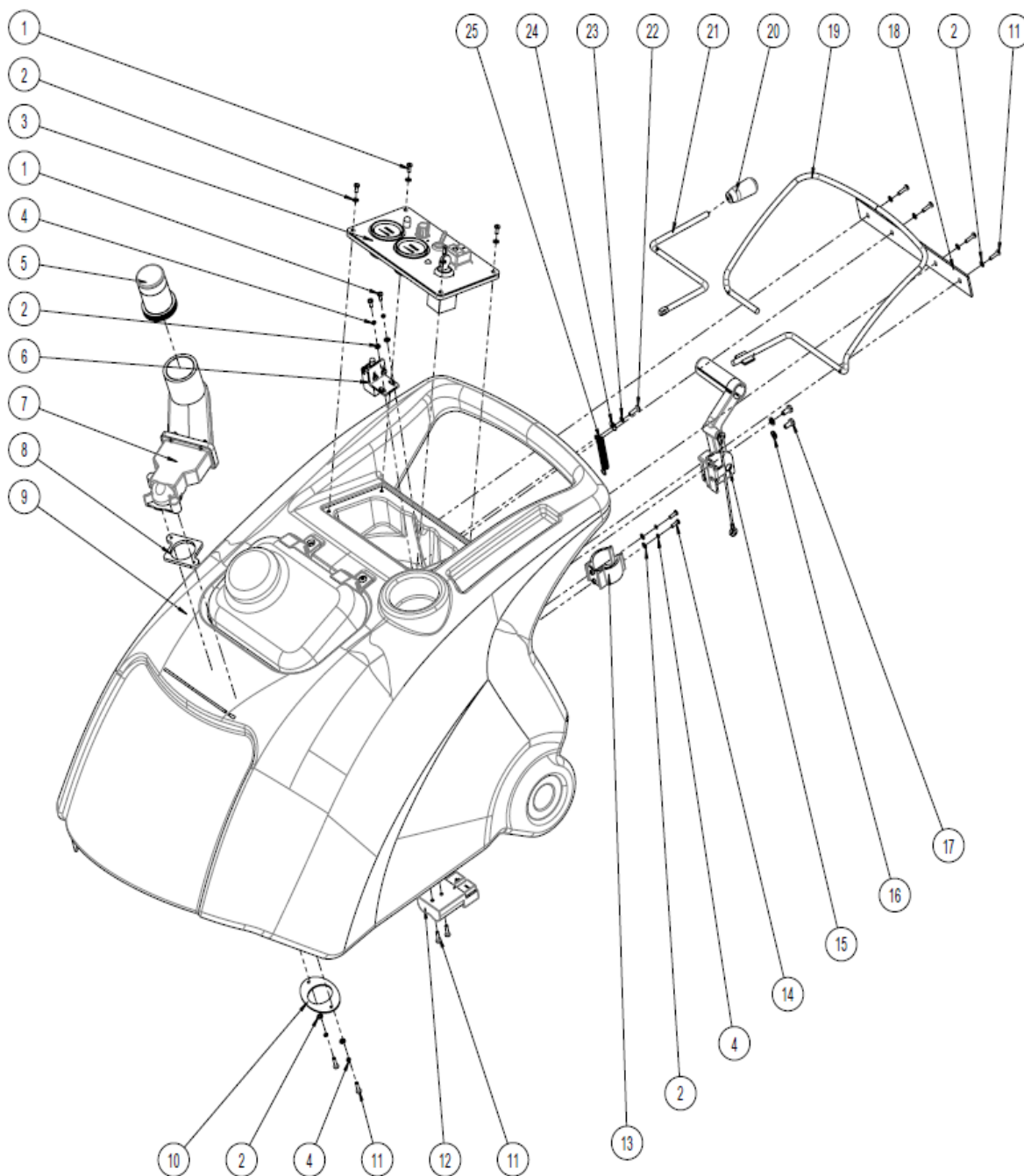
Ref.	Serail NO#	Desc.	QTY	Ref.	Serail NO#	Desc.	QTY
1	BZ020100010	M4*10 Big pan head cross screw	2	18	LJ030100075	GM50B Drain hose bracket	1
2	BZ020300002	M4 Flat mat	4	19	LJ030100067	GM50B Solution tank plug	1
3	BZ020400002	M4 Spring washer	4	20	LJ030200012	GM50B Solution tank plug gasket	1
4	LJ010200047	GM70BT Vacuum motor exhaust duct cov	1	21	LJ030100055	GM50B Tank connection decorative cover	1
5	LJ110100002	GM50B Water inlet filter	1	22	BZ020100018	ST4*10 Pan head cross self-tapping screw	2
6	BZ020100038	M6*12 Hex screw	2	23	LJ110100003	GM50B Solution tank filter (Outlet)	1
7	BZ020400004	M6 Spring washer	2	24	BZ070400013	¢20.9 Coated iron pad	2
8	BZ020300006	M6 Flat mat	2	25	BC05018012	Water valve frame assembly	1
9	LJ010100037	GM50B Recovery tank deputy handle	1	26	BC05006004	Water valve shaft assembly	1
10	LJ070100031	GM-65RBT Solution tank (grey)	1	27	BZ020100113	M6*20 Hex socket	2
11	LJ160100072	Battery warning label (small)	1	28	BZ020300007	M6 Large flat mat ¢18*¢6	1
12	LJ030200066	Transparent tube elbow sheath	2	29	LJ030100069	GM50B Water valve rotating shaft liner	1
13	LJ030100283	Transparent tube elbow(new)	2	30	LJ030100220	50B Water valve rotating shaft block	1
14	LJ080200017	PVC Transparent hose outer ¢12 inner ¢8	1	31	LJ030100054	GM50B Tank connection decorative cover bush	2
15	LJ060100002	GM70BT Battery	2	32	LJ030100080	GM50B Tank connection decorative cover (internal ratio tapping)	1
16	LJ030100018	GM70BT Battery bracket	1	33	BZ020200009	M6 self-locking nut	1
17	BZ020100164	M4*14 Big pan head cross screw	2				

GM65RBT污水箱组装I



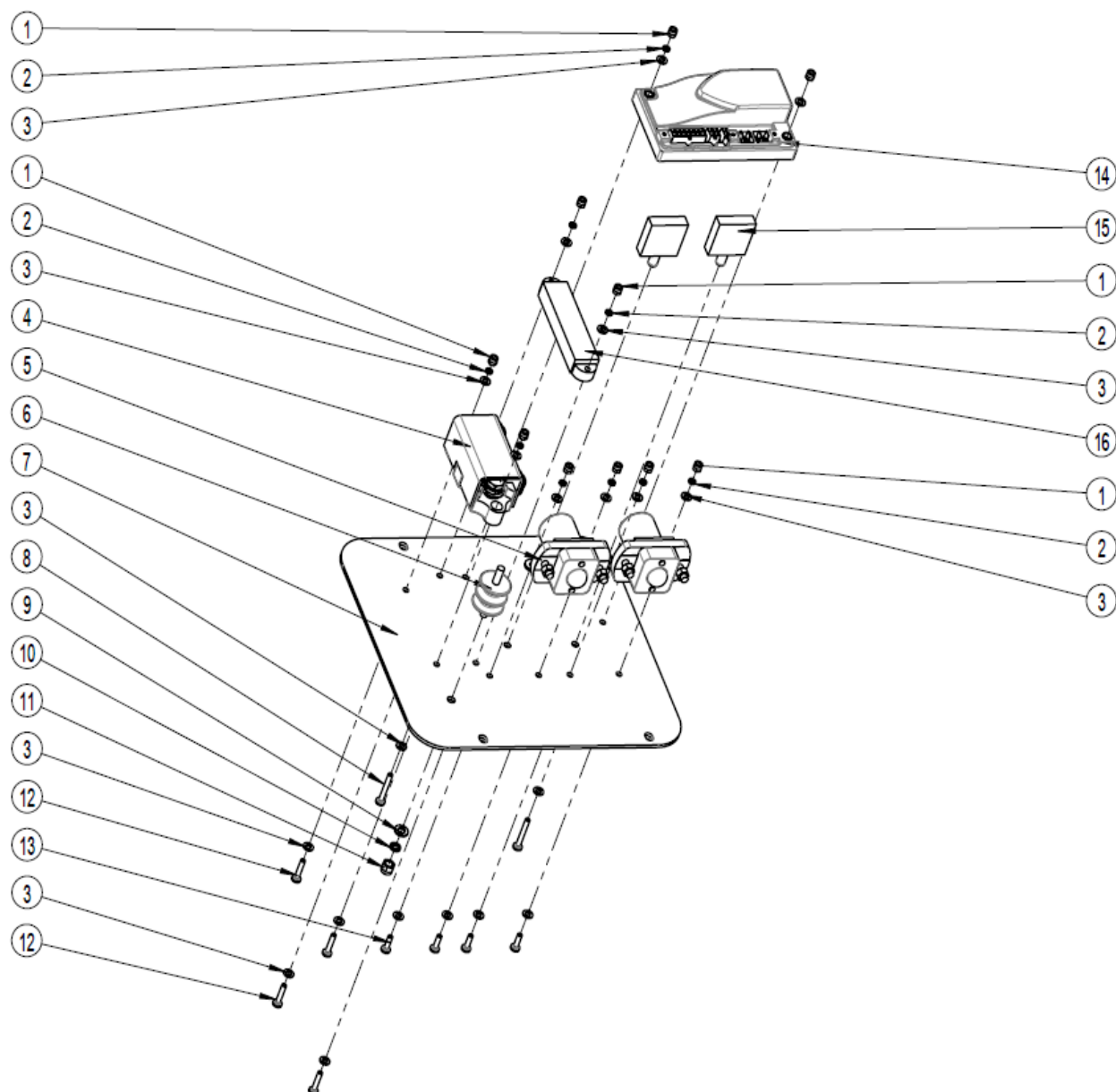
Ref.	Serail NO#	Desc.	QTY	Ref.	Serail NO#	Desc.	QTY
1	BZ020100050	M6*12 Big pan head cross screw	2	17	BZ021000001	GM50B 2-layers vacuum motor installation threaded rod M6×100mm	3
2	BZ020300006	M6 Flat mat	10	18	LJ010100028	GM50B Vacuum motor dust shield	1
3	BZ020200004	M4 Self-locking nut	2	19	LJ120100001	GM50B Soundproof sponge	1
4	BZ020400002	M4 Spring washer	3	20	LJ030200009	GM50B Vacuum motor bottom gasket	1
5	BZ020300002	M4 Flat mat	7	21	LJ010500071	GM70BT 2-layers motor mounting screw	3
6	LJ090100189	GM70BT Waste water sensor wire harness	1	22	BZ020100035	M6*16 Hex screw	2
7	LJ070200002	GM70BT Recovery tank 70L(grey)	1	23	LJ010200038	GM50B Recovery tank main handle copper liner	2
8	BZ010100005	c27-51 Adjustable clamp	2	24	LJ010300007	GM50B Recovery tank main handle spring	1
9	LJ080100012	GMmini/GM50B/GM70BT Drain hose (black)	1	25	LJ010100033	GM50B Recovery tank main handle	1
10	LJ080100011	GM50B / GM70BT Vacuum hose (dark grey)	1	26	BZ070400002	GM50B PTFE gasket (thin)	4
11	BC05024003	GM-65RBT Electrical installation board assembly	1	27	BZ020300007	M6 Large flat mat	2
12	BZ020100010	M4*10 Big pan head cross screw	5	28	BZ020100119	M4*20 Hex screw	2
13	BC05018004	Ametek vacuum motor assembly	1	29	BZ020300003	M4 Large flat mat	2
14	BZ020400004	M6 Spring washer	5	30	LJ030100061	GM50B Sensor cover	1
15	BZ020200008	M6 Nut	3	31	BC05018009	GM50B Transparent cover assembly	1
16	BZ020200009	M6 Self-locking nut	3				

GM65RBT污水箱组装II



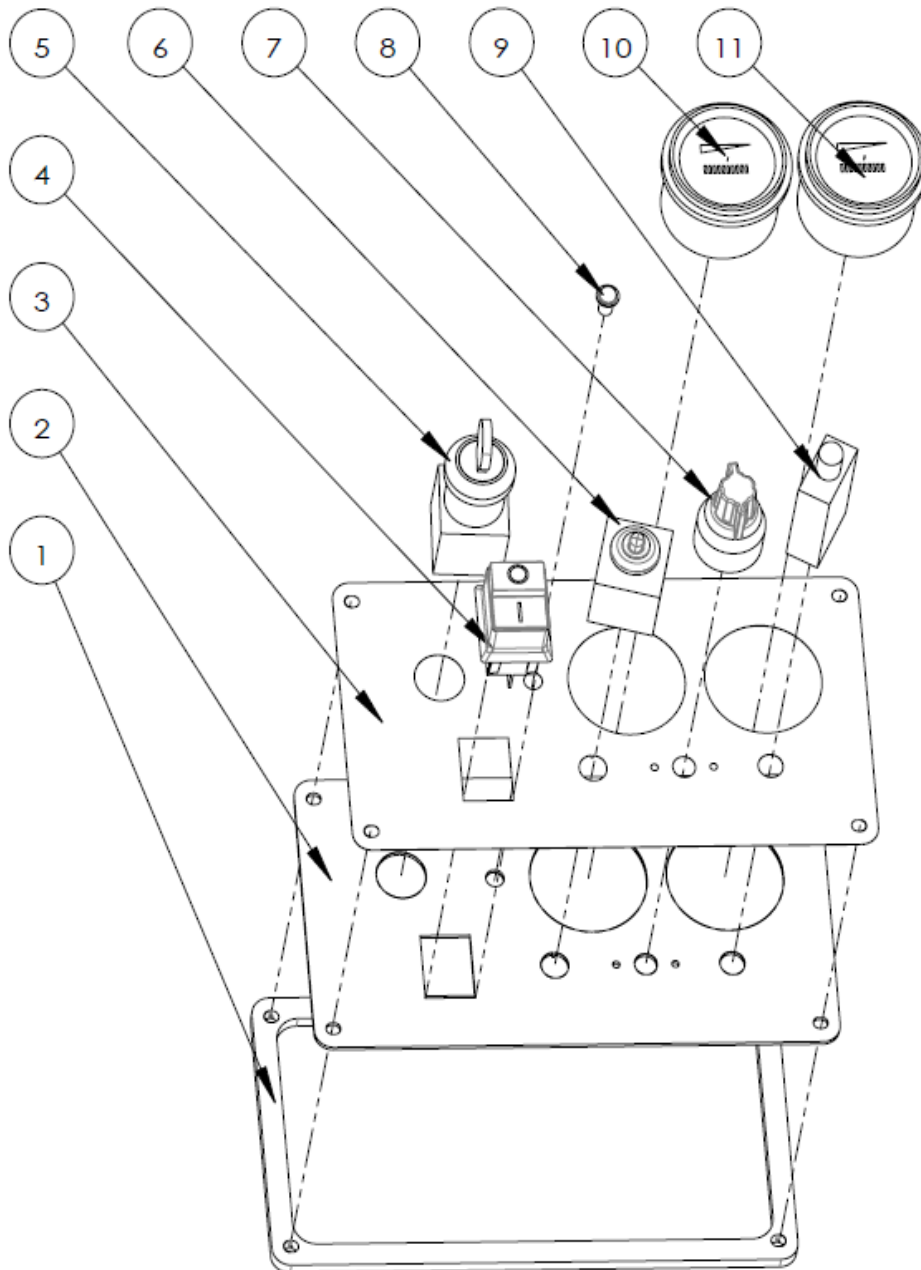
Ref.	Serail NO#	Desc.	QTY	Ref.	Serail NO#	Desc.	QTY
1	BZ020100010	M4*10 Big pan head cross screw	6	14	BZ020100008	M4*12 Big pan head cross screw	2
2	BZ020300002	M4 Flat mat	14	15	BC05006013	Squeegee lift handle assembly	1
3	BC05024004	GM-65RBT Panel assembly	1	16	BZ020300006	M6 Flat mat	2
4	BZ020400002	M4 Spring washer	4	17	BZ020100038	M6*12 Hex screw	2
5	LJ110200001	GM50B Recovery tank filter (transparent co	1	18	LJ010100030	GM50B Switch arm cover	1
6	BC05006007	Brush switch bracket assembly	1	19	LJ010100353	GM70BT Drive switch handle	1
7	BC05018025	Recovery tank filter assembly (injection tran	1	20	LJ030100072	GM50B Water value handel decorative cover	1
8	LJ030200008	GM50B Recovery tank filter gasket	1	21	LJ010100043	GM50B Water value handle switch	1
9	LJ070200002	GM70BT Recovery tank 70L (Grey)	1	22	BZ020100023	M5*16 Big pan head cross screw	1
10	LJ010100055	GM50B Recovery tank filter iron pad	1	23	BZ020400003	M5 Spring washer	1
11	BZ020100006	M4*16 Big pan head cross screw	4	24	BZ020300004	M5 Flat mat	1
12	LJ021100002	Charger connect kit	1	25	LJ010300010	GM70BT Drive switch handle spring	1
13	LJ030100075	GM50B Drain hose bracket	1				

GM-65RBT 电器安装板组件



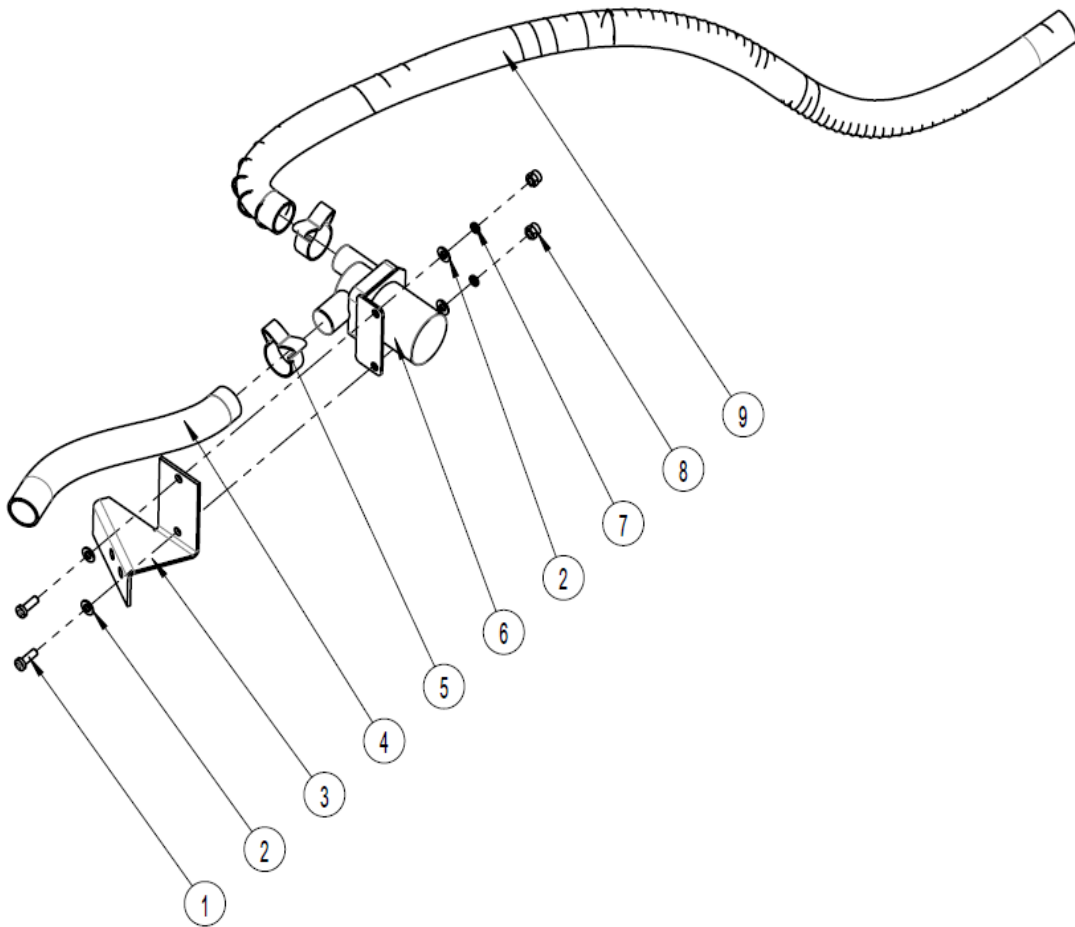
Ref.	Serail NO#	Desc.	QTY
1	BZ020200004	M4 Self-locking nut	10
2	BZ020400002	M4 Spring washer	10
3	BZ020300002	M4 Flat mat	20
4	LJ020300001	100A Fuse box	1
5	LJ020800003	DC contactor	2
6	LJ020800002	Insulator	1
7	LJ010100433	GM-65RBT Electrical installation board	1
8	BZ020100133	M4*30 Big pan head cross screw	2
9	BZ020300006	M6 Flat mat	1
10	BZ020400004	M6 Spring washer	1
11	BZ020200009	M6 Self-locking nut	1
12	BZ020100014	M4*20 Big pan head cross screw	4
13	BZ020100164	M4*14 Big pan head cross screw	4
14	LJ020200008	Curtis board	1
15	LJ020300009	30A protector (with waterproof cap)	2
16	LJ020500008	Shunt	1

GM-65RBT面板组件



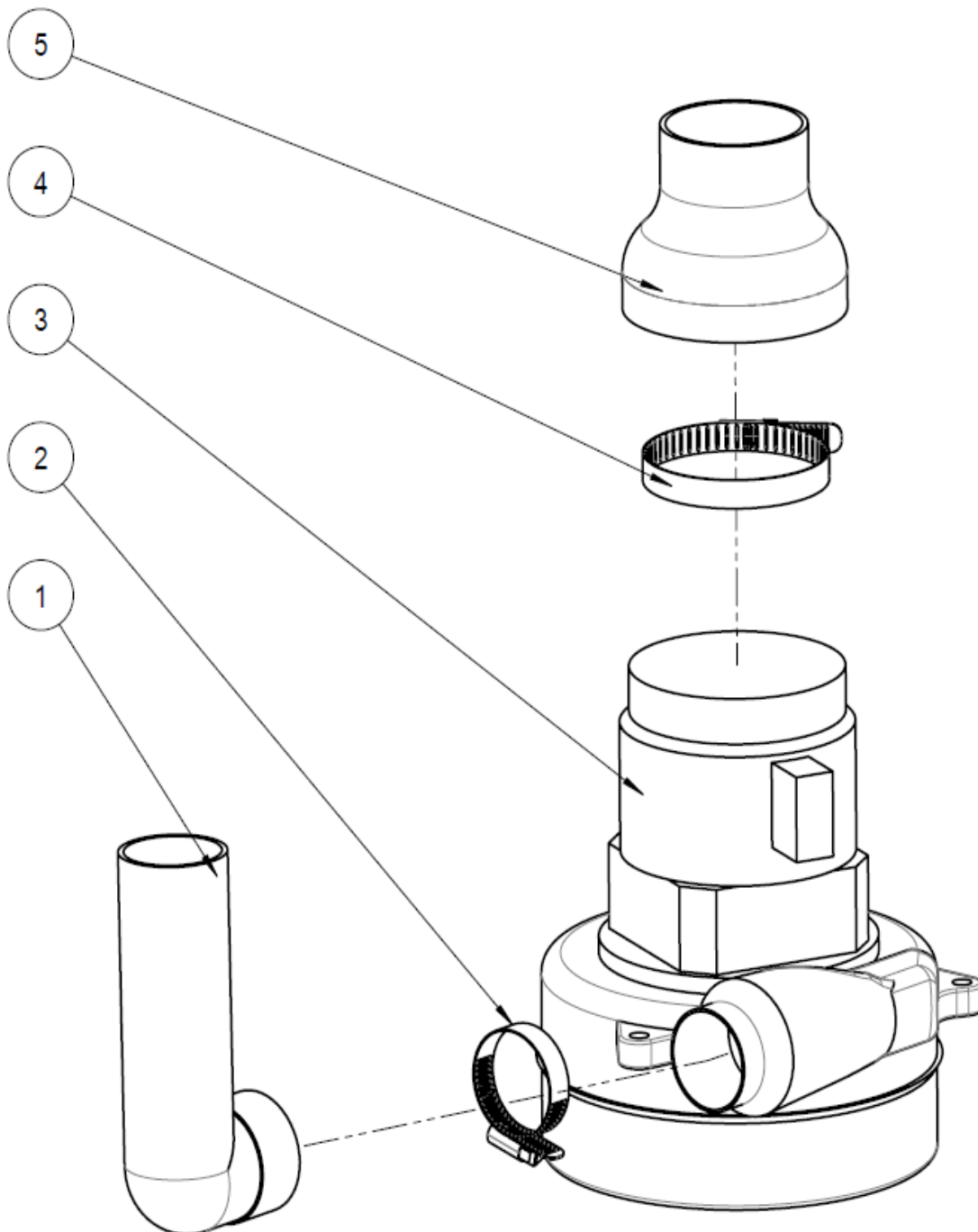
Ref.	Serail NO#	Desc.	QTY
1	LJ120100002	GM50B Control panel gasket	1
2	LJ010100430	GM-65RBT Panel	1
3	LJ160200072	GM-65RBT Panel label	1
4	LJ020100046	Bilateral reset switch	1
5	LJ020100039	GM50B key switch with emergency stop	1
6	LJ020100024	70B Direction switch (with cap)	1
7	BZ060100002	GM70BT Speed switch knob	1
8	LJ021300001	Fault indicator 24V	1
9	LJ020300008	5A protector (with waterproof cap)	1
10	LJ020500001	GM50B Battery scale 24V	1
11	LJ020500007	Ammeter	1

R-65RBT电磁阀组件



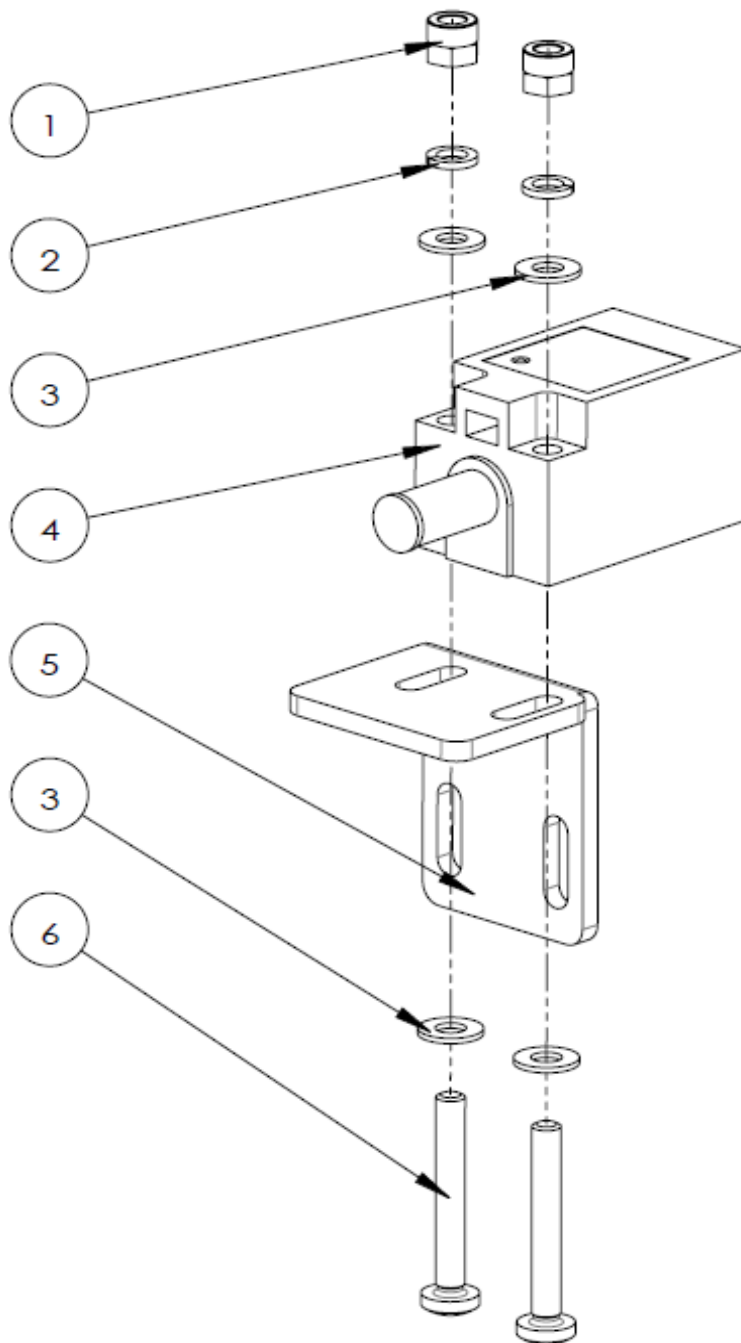
Ref.	Serail NO#	Desc.	QTY
1	BZ020100008	M4*12 Big pan head cross screw	2
2	BZ020300002	M4 Flat mat	4
3	LJ010100281	70B Solenoid valve holder	1
4	LJ080200008	GM50B Clean water pipe 135mm	1
5	BZ010100007	φ22.6 Ear type clamp	2
6	LJ040400003	GM70BT Solenoid valve	1
7	BZ020400002	M4 Spring washer	2
8	BZ020200004	M4 Self-locking nut	2
9	LJ080500001	Steel wire pipe 1000mm	1

阿美德格真空马达组件



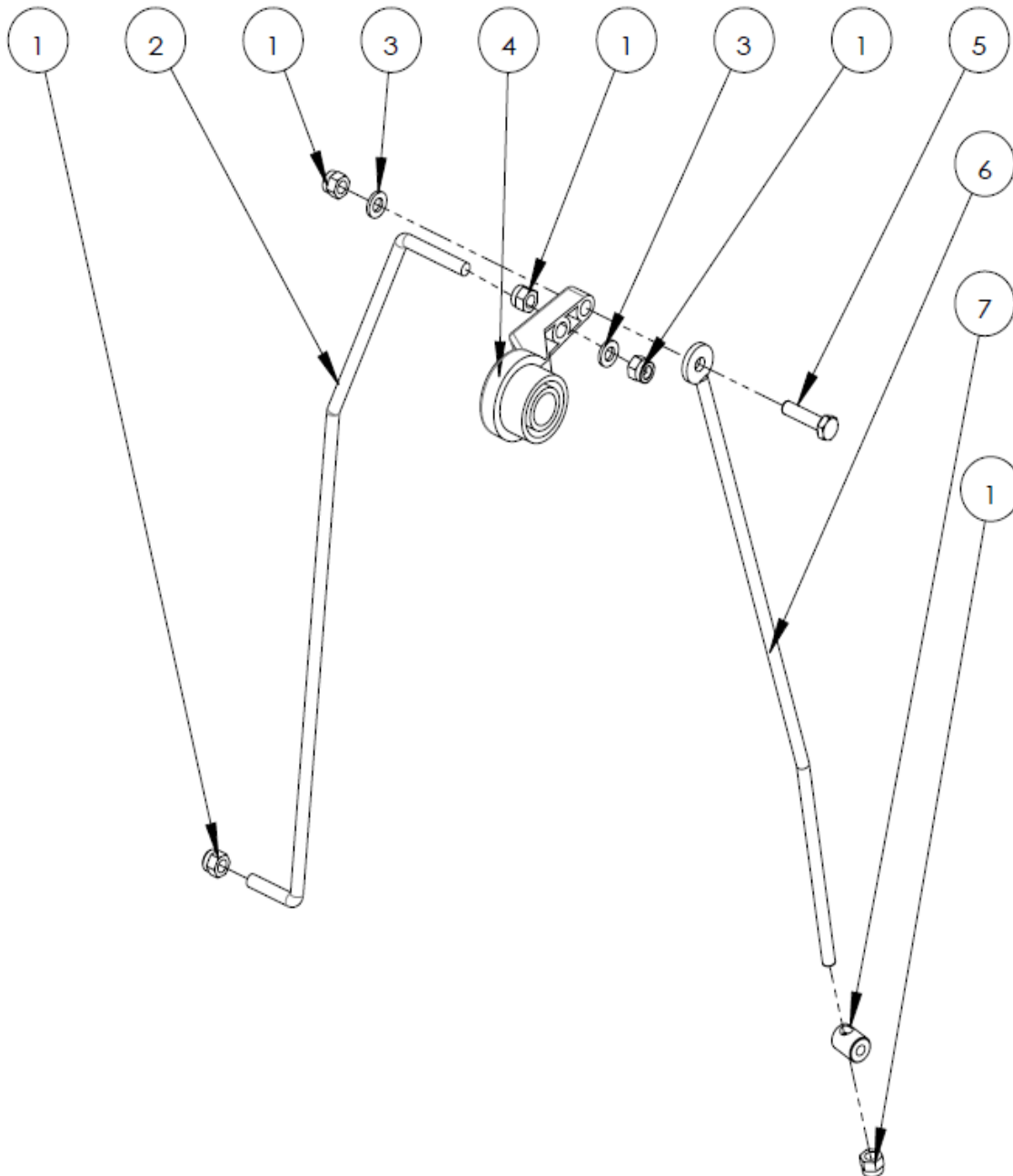
Ref.	Serail NO#	Desc.	QTY
1	LJ030200011	GM50B Vacuum motor exhaust duct	1
2	BZ010100005	Adjustable clamp $\phi 30-51$	1
3	LJ040200002	GM50B 2-layers vacuum motor	1
4	BZ010100006	Adjustable clamp hoop $\phi 70-90$	1
5	LJ030200010	GM50B Vacuum motor suction hood	1

刷头开关支架组件



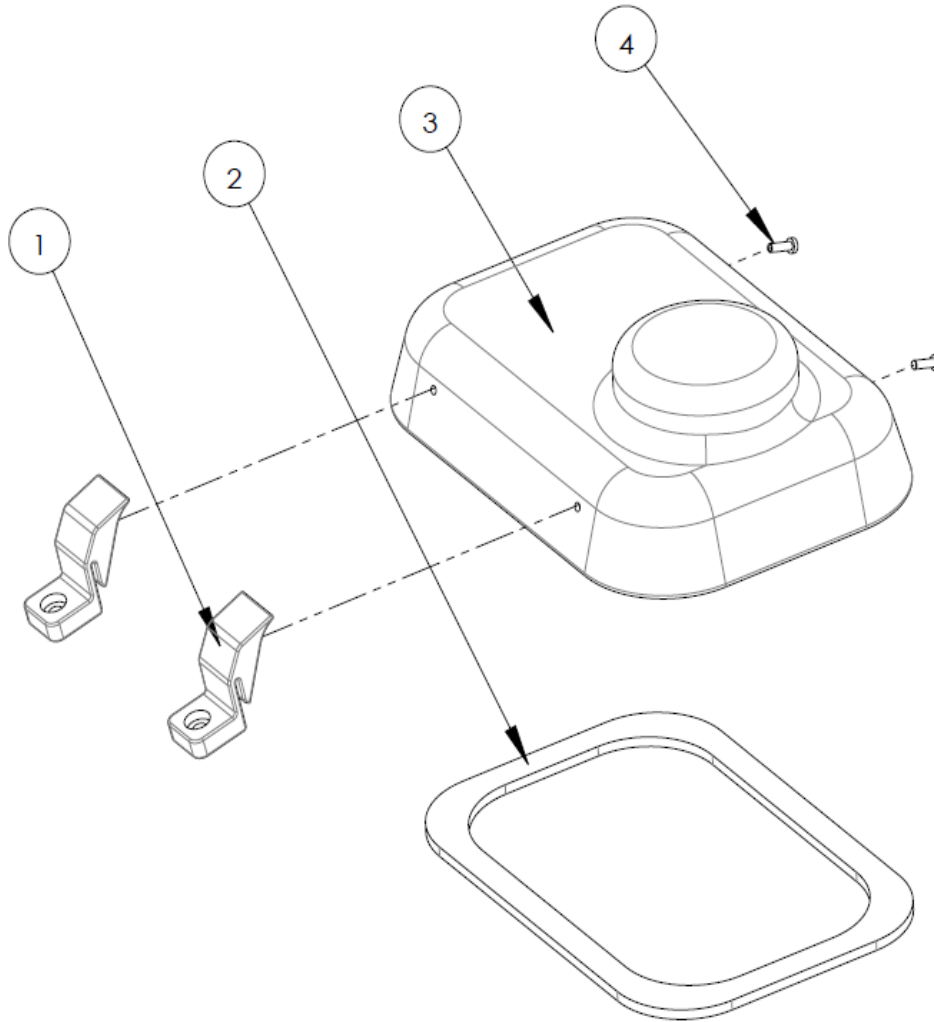
Ref.	Serail NO#	Desc.	QTY
1	BZ020200004	M4 Self-locking nut	2
2	BZ020400002	M4 Spring washer	2
3	BZ020300002	M4 Flat mat	4
4	LJ020100033	Proximity switch	1
5	LJ010100074	GM70BT Motor switch mounting plate	1
6	BZ020100133	M4*30 Big pan head cross screw	2

水阀拉杆转轴组件



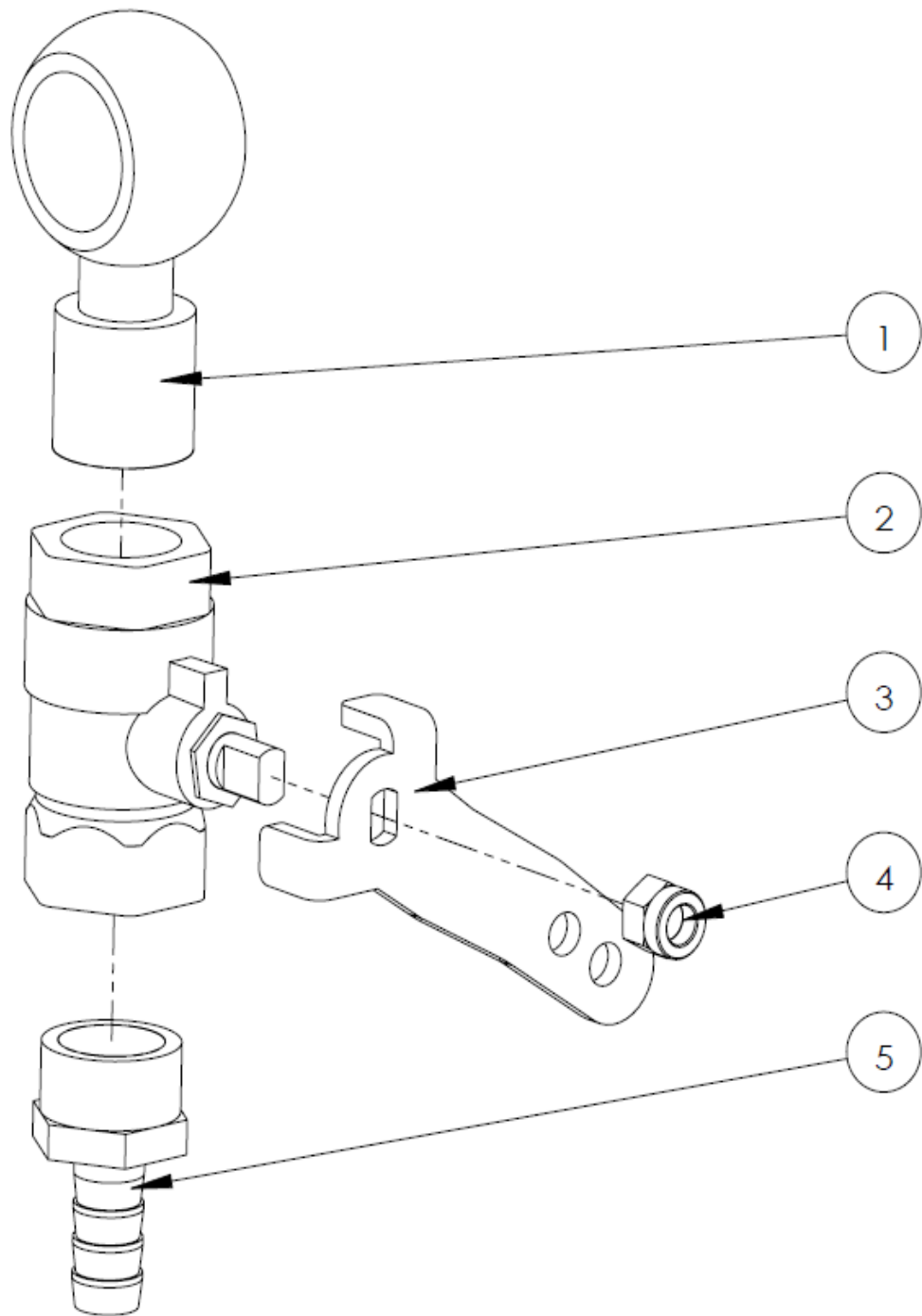
Ref.	Serail NO#	Desc.	QTY
1	BZ020200009	M6 Self-locking nut	5
2	LJ010100082	GM70BT Water valve upper rod	1
3	BZ020300006	M6 Spring washer	2
4	LJ030100065	GM50B Water valve shaft	1
5	BZ020100042	M6*25 Hex screw	1
6	LJ010100391	GM70BT Water valve under rod	1
7	LJ010200036	GM50B Water valve pin	1

GM50B透明盖组件



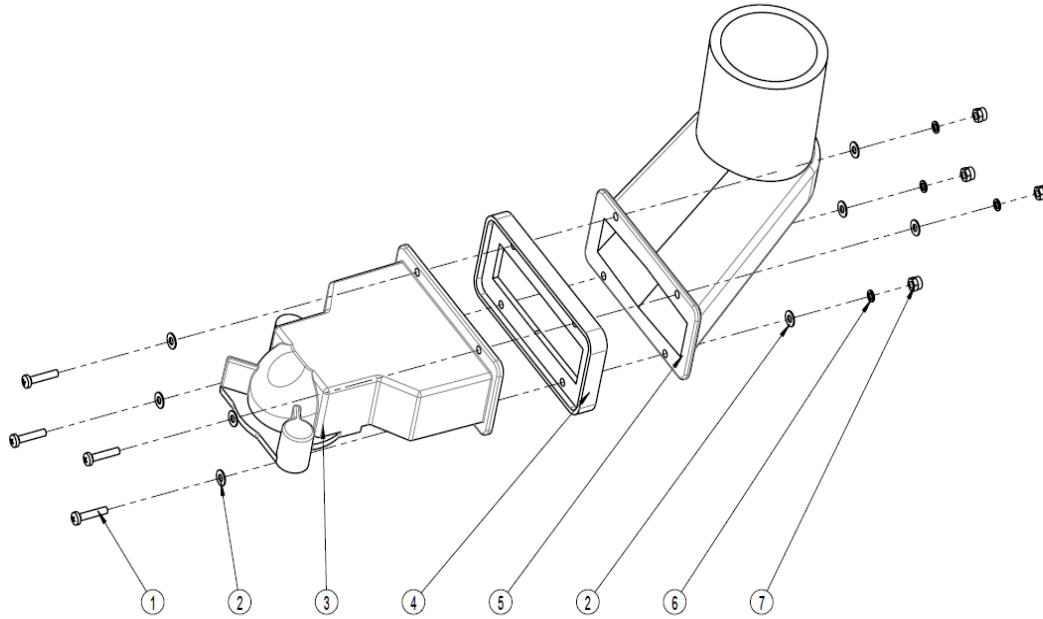
Ref.	Serail NO#	Desc.	QTY
1	LJ030200007	GM50B Tank transparent cover hinge	2
2	LJ030200166	50B Transparent cover transparent leather cushion	1
3	LJ030100058	GM50B Recovery tank transparent cover	1
4	BZ020100008	M4*12 Big pan head cross screw	2

水阀主体组件



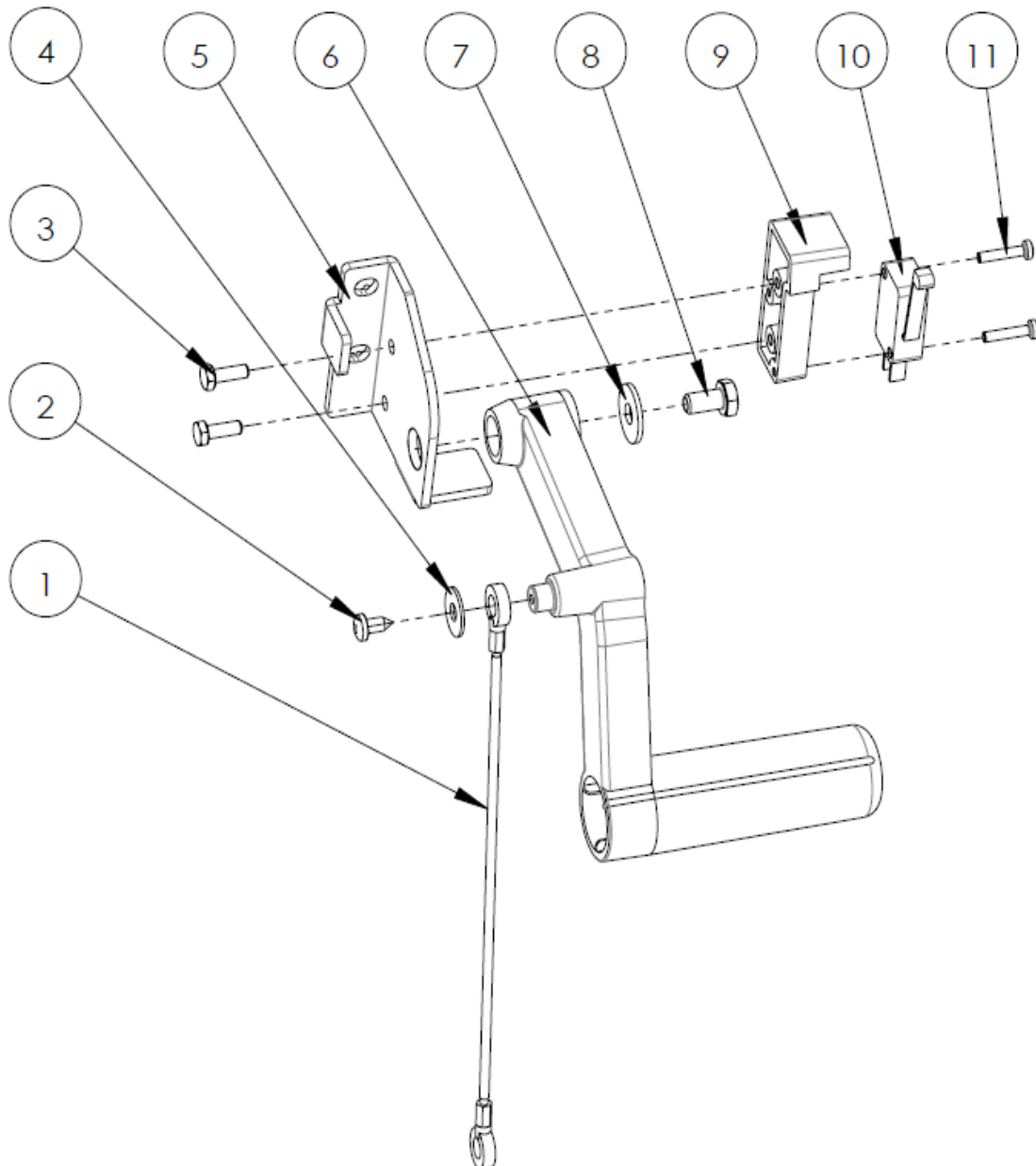
Ref.	Serail NO#	Desc.	QTY
1	LJ100100004	GM50B Hollow gong	1
2	LJ100100001	GM50B Water valve frame	1
3	LJ010100040	GM50B Water valve handle	1
4	BZ020200008	M8 Self-locking nut	1
5	LJ010500016	1/2 outer wire x c14 direct	1

污水箱滤网组件



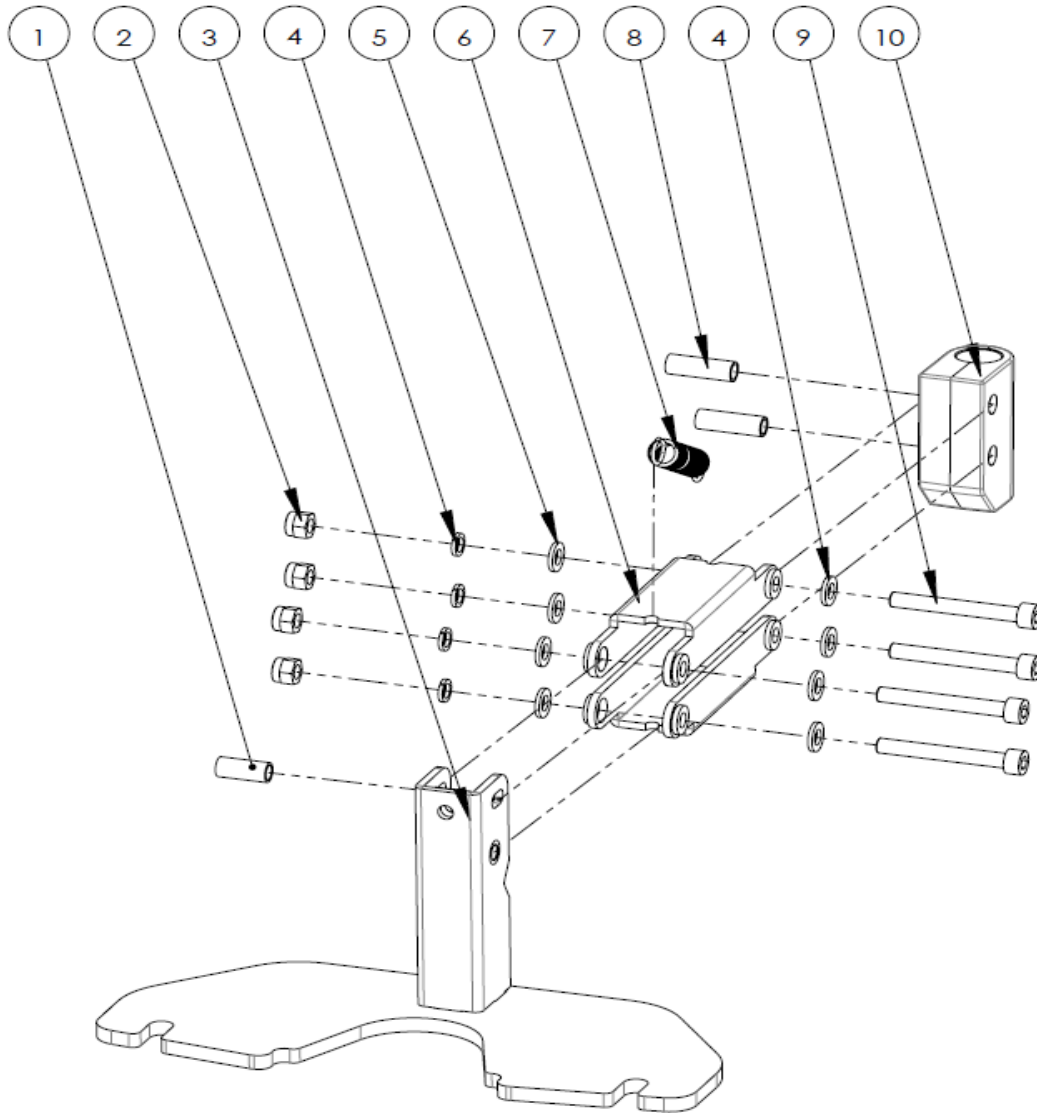
Ref.	Serail NO#	Desc.	QTY
1	BZ020100001	M3*16 Big pan head cross screw	1
2	BZ020300001	M3 Flat mat	8
3	LJ030100056	GM50B Recovery tank filter mounting seat (long round cover)	1
4	LJ030200060	GM50B Recovery tank filter gasket	1
5	LJ030100221	GM50B Recovery tank filter front duct (transparent cover)	1
6	BZ020400001	M3 Spring washer	4
7	BZ020200002	M3 self-locking nut	4

吸水扒升降手把组件



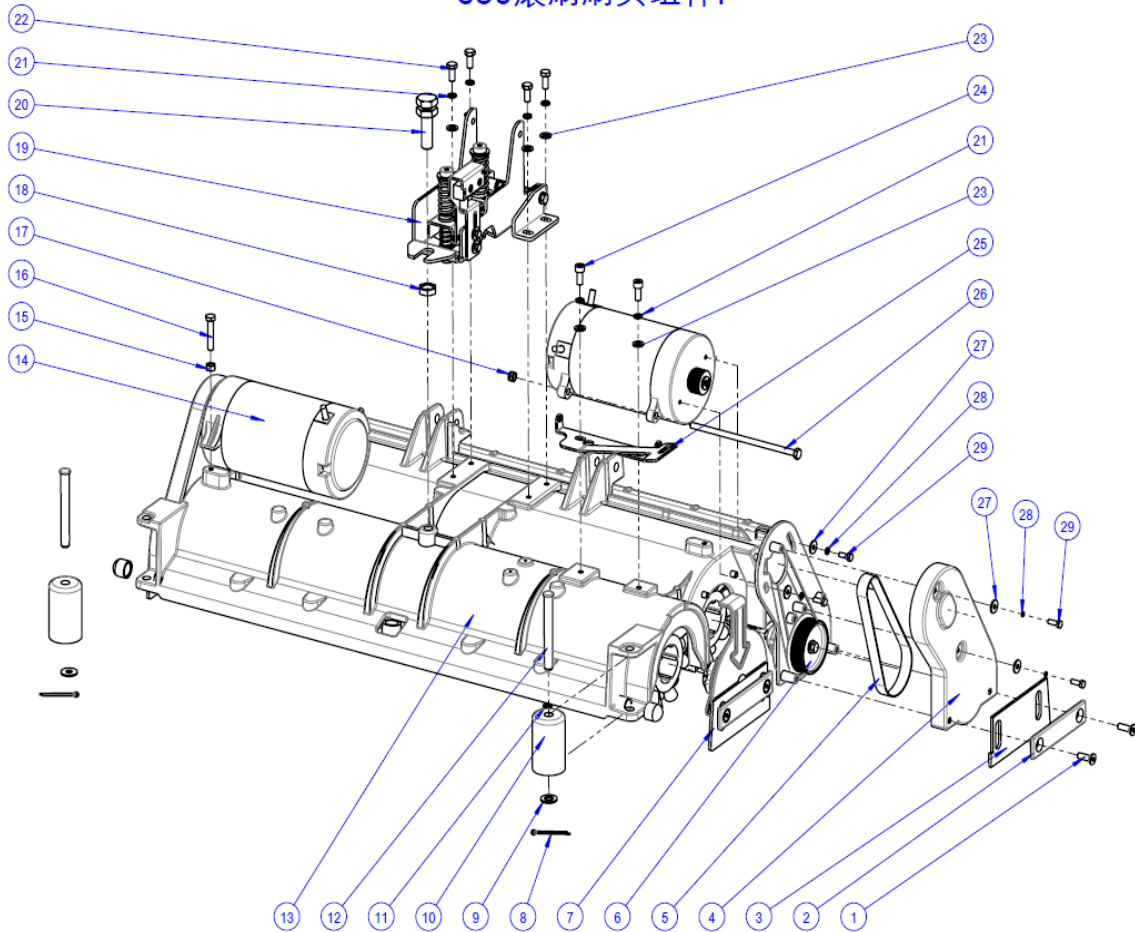
Ref.	Serail NO#	Desc.	QTY
1	BZ110100002	GM70BT Squeegee lift bracket wiredrawing	1
2	BZ020100018	ST4*10 Pan head cross self tapping screw	1
3	BZ020100021	M4*12 Hex screw	2
4	BZ020300005	M5 Large flat mat	1
5	LJ010100034	GM50B Squeegee lift bracket	1
6	LJ030100062	GM50B Squeegee lift handle	1
7	BZ020300007	M6 Large flat mat	1
8	BZ020100038	M6*12 Hex screw	1
9	LJ010100036	GM50B Micro switch mounting plate	1
10	LJ020100008	GM50B Single pole micro switch	1
11	BZ020100001	M3*16 Pan head cross screw	1

吸水扒支架组件



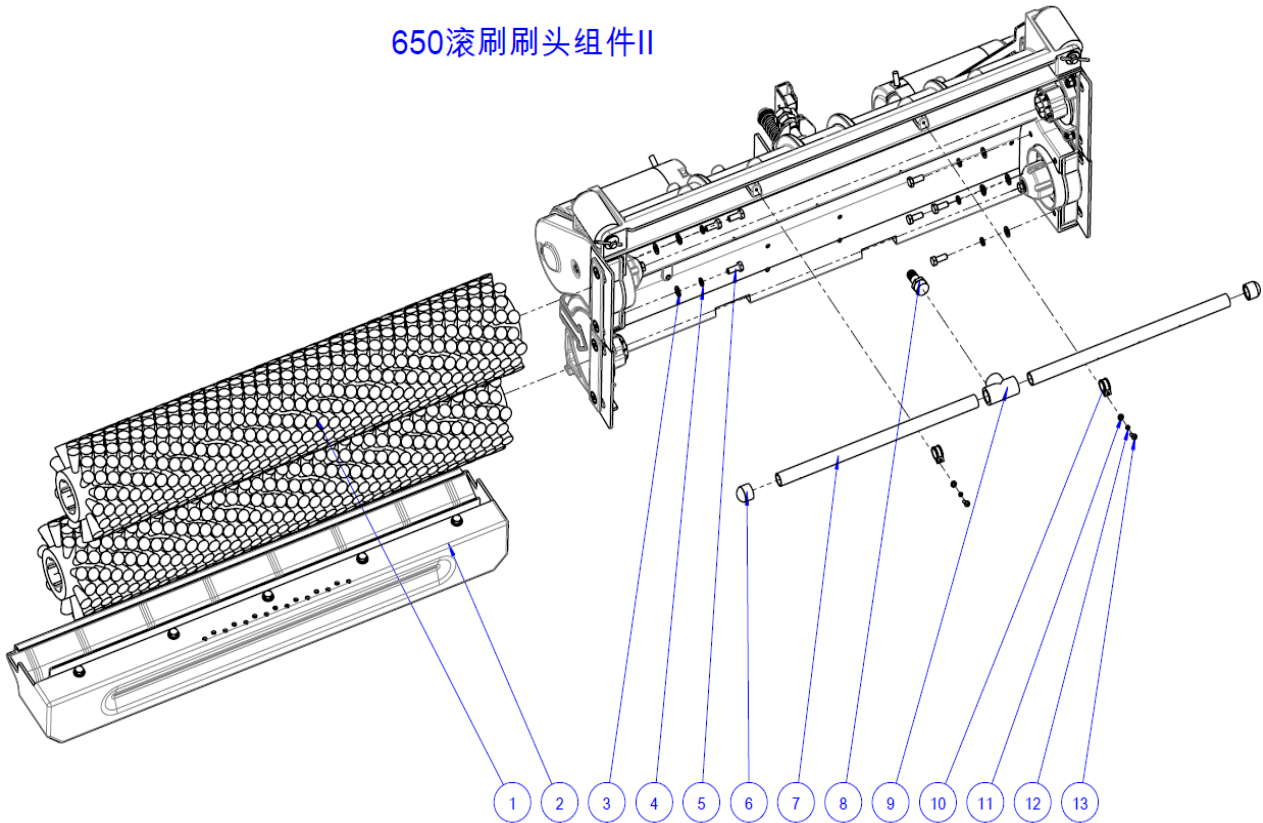
Ref.	Serail NO#	Desc.	QTY
1	LJ010500014	GM50B Squeegee bracket sleeve	2
2	BZ020200009	M6 Self-locking nut	2
3	LJ010100024	GM50B Squeegee bracket	1
4	BZ020400004	M6 Spring washer	4
5	BZ020300006	M6 Flat mat	8
6	LJ010100031	GM50B Squeegee adjust connector	2
7	LJ010300006	GM50B Squeegee spring	1
8	LJ010500069	50B Squeegee guiding connection part	2
9	BZ020100047	M6*50 Hex Socket screw (Length 25mm) 12.9	4
10	LJ010200243	GM50B Squeegee guiding connection part	1

650滚刷刷头组件I



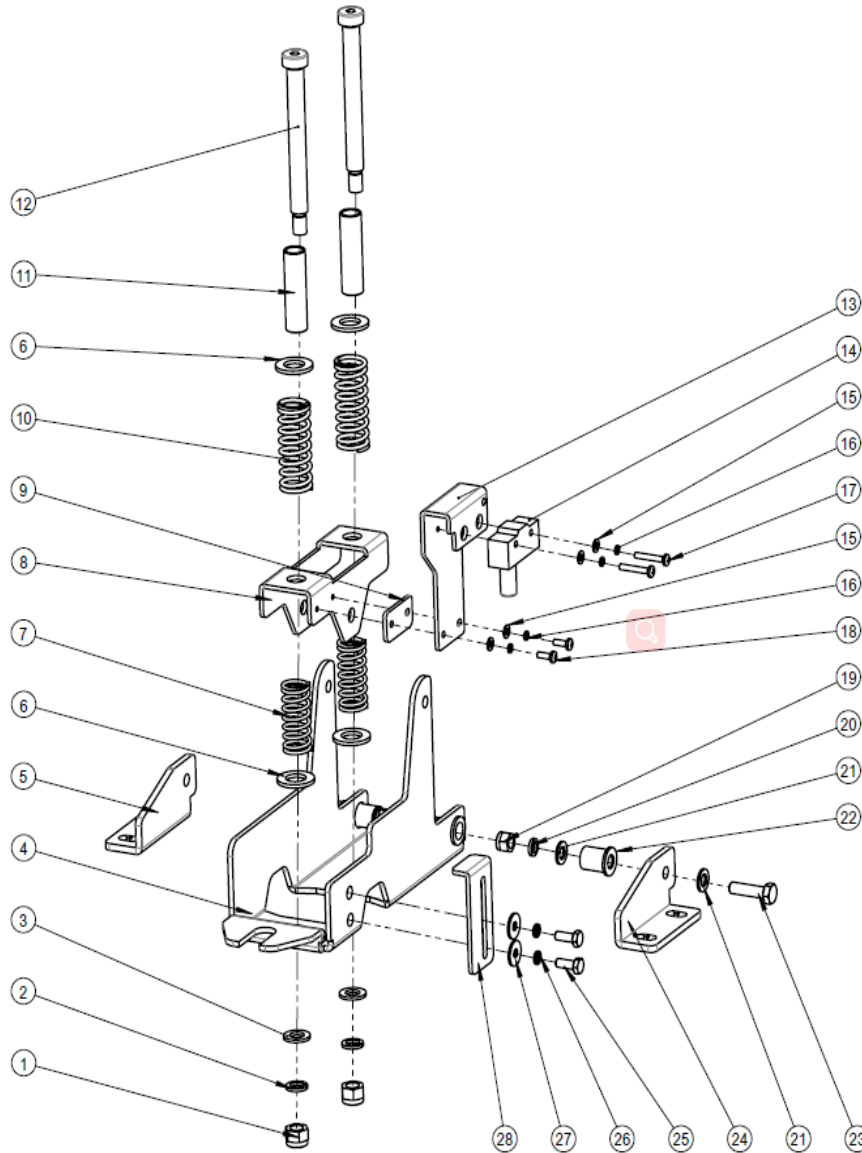
Ref.	Serail NO#	Desc.	QTY	Ref.	Serail NO#	Desc.	QTY
1	BZ020100204	M8*25 Flat head hex socket screw	4	16	BZ020100062	M8*45 Hex screw	2
2	LJ030100243	Side rubber connector cover	2	17	BZ020200011	M8 Self-locking nut	2
3	LJ030200182	Side rubber	2	18	BZ020200030	M16 Nut	1
4	LJ010200331	Motor aluminum cover	2	19		Roller brush rack suspension assembly	1
5	LJ030200185	190J Ribbed belt	2	20	LJ010200337	Adjustment bolt M16×50	1
6	BC06024012	Large pulley assembly	2	21	BZ020400005	M8 Spring washer	8
7	BC06024011	Brush buckle cover assembly	2	22	BZ020100063	M8*20 Hex screw	4
8	BZ160100020	Open pin C4X30	2	23	BZ020300009	M8 Flat mat	8
9	BZ020300013	M12 Flat mat (stainless steel)	2	24	BZ020100222	M8*20 Hex socket screw	4
10	LJ030200192	Roller brush anti-collision column	2	25	LJ010300054	Roller buckle	2
11	BZ020500002	C12 Wave pad	2	26	BZ020100230	M8*185 Hex screw	2
12	BZ160100025	Pin B type 12×110	2	27	BZ020300007	M6 Large flat mat	8
13	LJ010200298	Roller brush cover 650	1	28	BZ020400004	M6 Spring washer	8
14	BC06024015	Roller brush motor assembly	2	29	BZ020100035	M6*16 Hex screw 304 stainless steel	8
15	BZ020200010	M8 Nut	2				

650滚刷刷头组件II



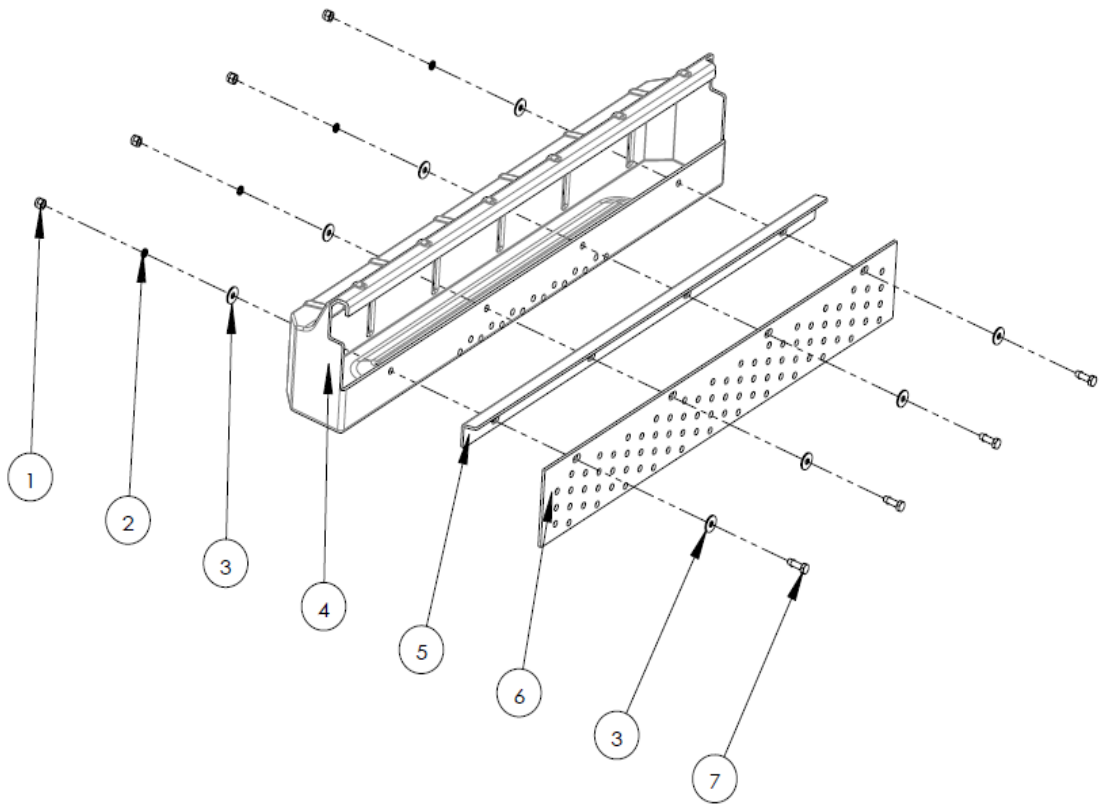
Ref.	Serail NO#	Desc.	QTY
1	LJ050200005	Roller brush 650	2
2	BC05024001	650 COLLECTION BOX collection box GROUP	1
3	BZ020300009	M8 Flat mat	8
4	BZ020400005	M8 Spring washer	8
5	BZ020100063	M8*20 Hex screw	8
6	LJ030100264	Roller brush water tube plug	2
7	LJ030100273	Roller brush water tube	2
8	LJ030100272	Roller brush water tube connector	1
9	LJ030100263	Roller brush water tube tee joints	1
10	LJ010100417	Roller brush water tube clamp	2
11	BZ020300002	M4 Flat mat	2
12	BZ020400002	M4 Spring washer	2
13	BZ020100008	M4*12 Big pan head cross screw	2

滚刷架悬挂组装



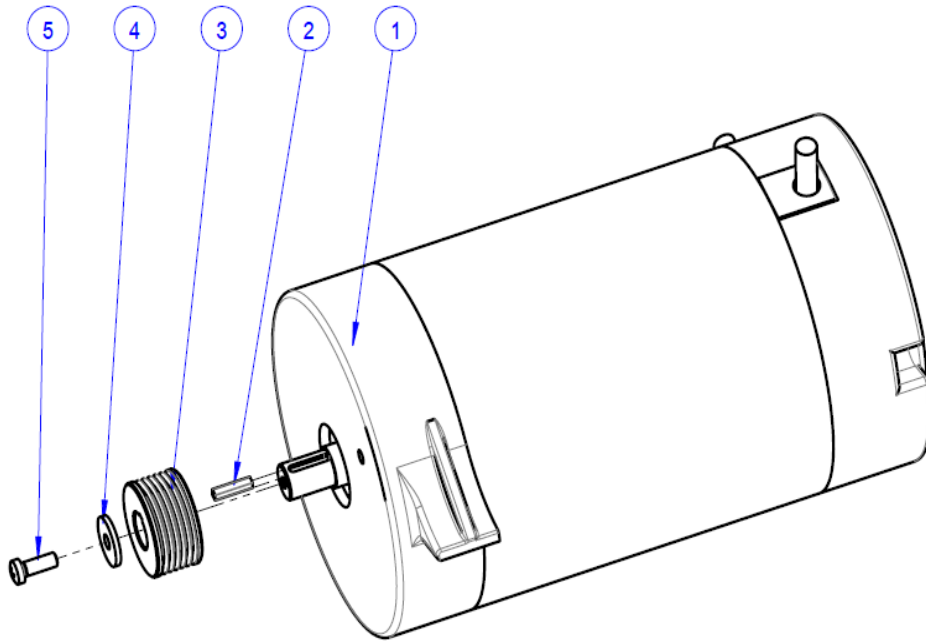
Ref.	Serail NO#	Desc.	QTY	Ref.	Serail NO#	Desc.	QTY
1	BZ020200014	M10 self-locking nut	2	15	BZ020300002	M4 Flat mat	4
2	BZ020400006	M10 Spring washer	2	16	BZ020400002	M4 Spring washer	4
3	BZ020300012	M10 Flat mat	2	17	BZ020100082	M4*25 Big pan head cross screw	2
4	LJ010100412	GM110 Pushrod pressure board welds	1	18	BZ020100008	M4*12 Big pan head cross screw	2
5	LJ010100413	800 Pushrod pressure left fixed bracket	1	19	BZ020200011	M8 Self-locking nut	2
6	BZ020300021	M14 Flat mat	4	20	BZ020400005	M8 Spring washer	2
7	LJ010300061	Roller suspension under spring	2	21	BZ020300009	M8 Flat mat	4
8	LJ010100408	Pushrod connection board	1	22	LJ010200040	GM50B motor connection copper bush outer C20	2
9	LJ010100410	Pushrod switch mounting base board	1	23	BZ020100060	M8*30 Hex screw	2
10	LJ010300053	Roller suspension upper spring	2	24	LJ010100414	800 Pushrod pressure right fixed bracket	1
11	LJ010200335	Spring bushing	2	25	BZ020100035	M6*16 Hex screw 304 stainless steel	2
12	BZ020100205	Stuff screw C12 * 110mm	2	26	BZ020400004	M6 Spring washer	2
13	LJ010100409	Pushrod switch mounting board	1	27	BZ020300007	M6 Large flat mat	2
14	LJ020100045	Plunger stroke switch	1	28	LJ010100411	Pushrod switch baffle	1

650收集盒组件



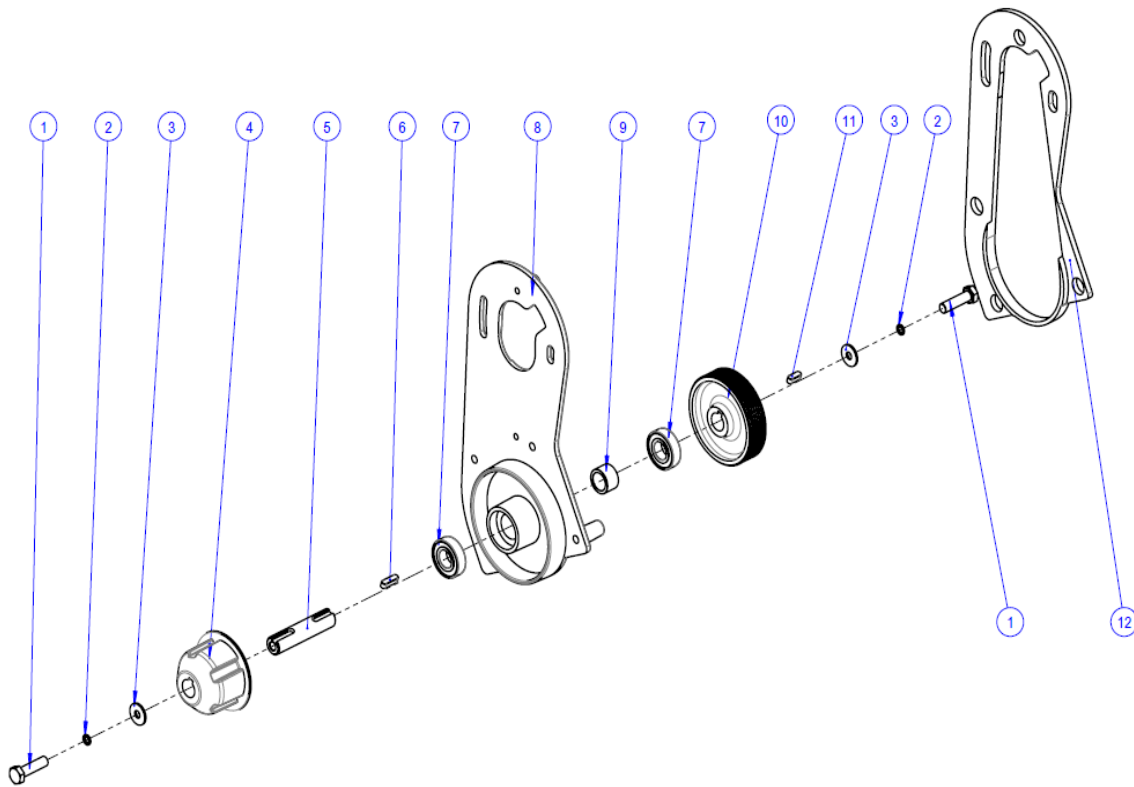
Ref.	Serail NO#	Desc.	QTY
1	BZ020200009	M6 Self-locking nut	4
2	BZ020400004	M6 Spring washer	4
3	BZ020300007	M6 Large flat mat	8
4	LJ070300039	650 collection box	1
5	LJ010100486	Noise reduction rubber retainer 650	1
6	LJ030200184	Noise reduction rubber 650	1
7	BZ020100034	M6*20 Hex screw	4

滚刷电机组装



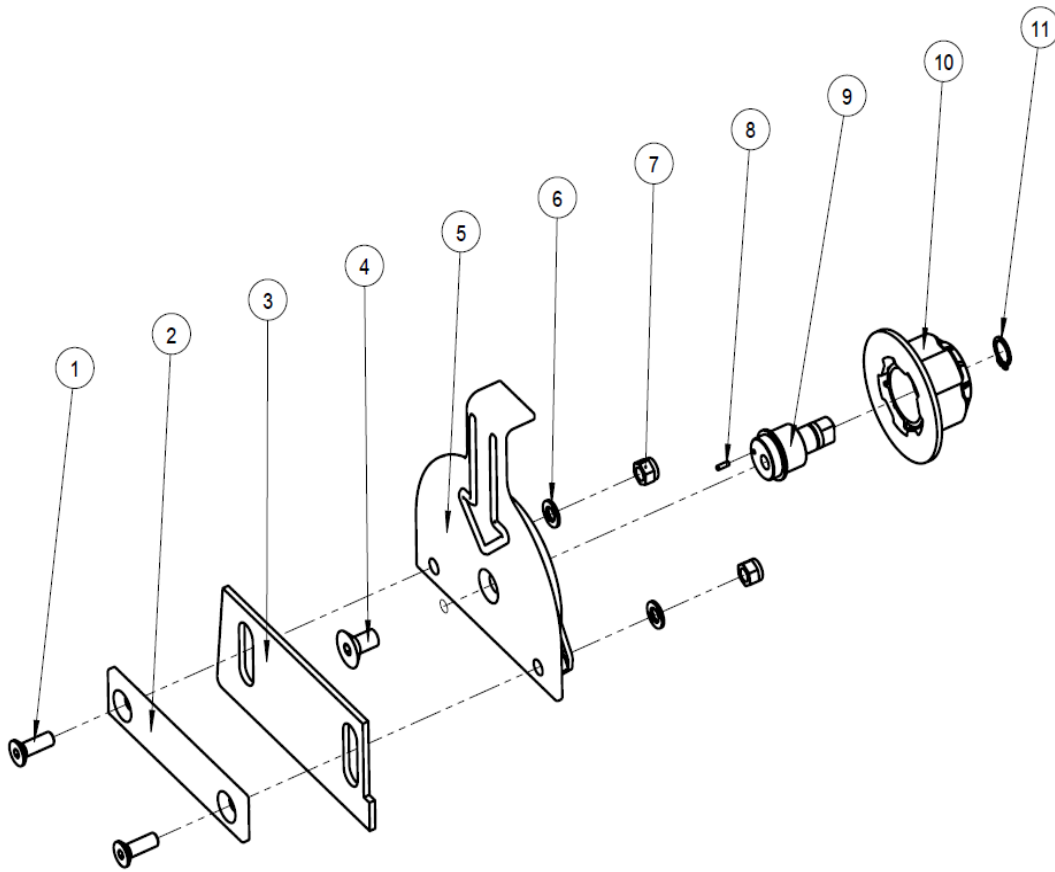
Ref.	Serail NO#	Desc.	QTY
1	LJ040100045	800 Roller brush motor - long	1
2	BZ130100007	3X3X16mm key	1
3	LJ010200326	Roller small pulley	1
4	BZ020300005	M5 Large flat mat	1
5	BZ020100215	M5*10 Sinistral big pan head cross screw	1

大带轮组装



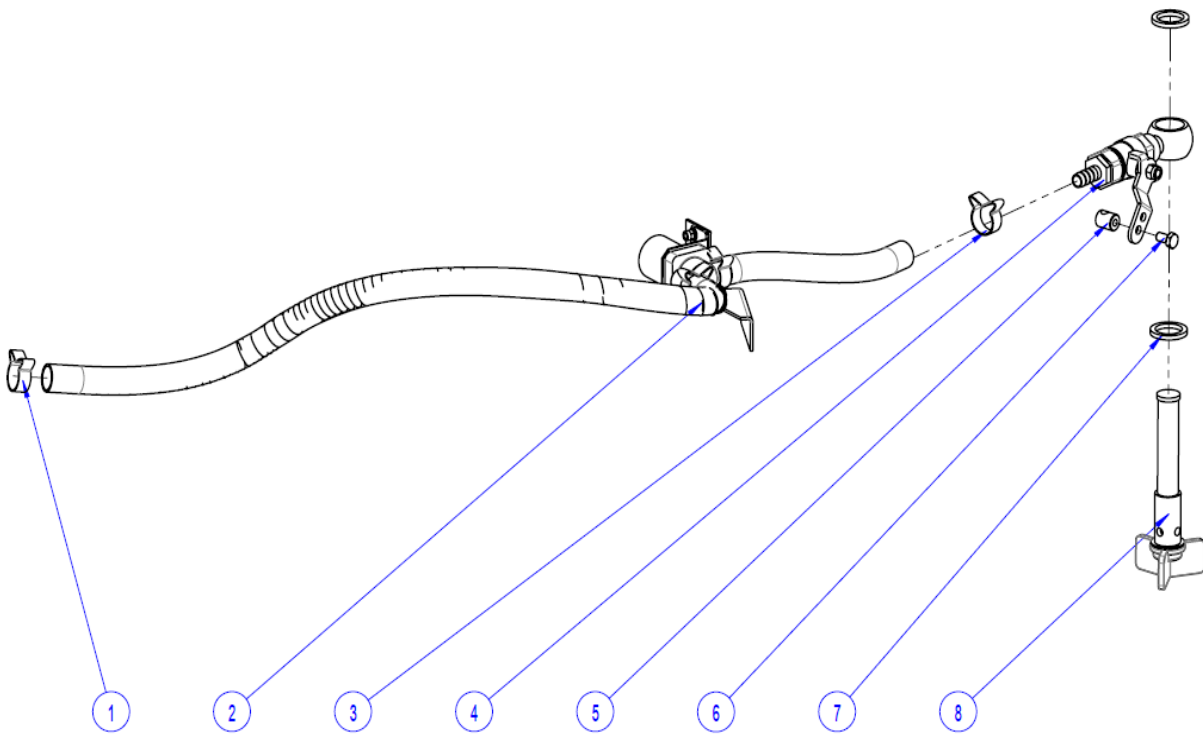
Ref.	Serail NO#	Desc.	QTY
1	BZ020100063	M8*20 Hex screw	2
2	BZ020400005	M8 Spring washer	2
3	BZ020300010	M8 Large flat mat	2
4	LJ010200327	Roller brush cast aluminum buckle	1
5	LJ010200330	Large pulley axle	1
6	BZ130100009	5X5X14mm key	1
7	BZ040100013	6002-2RS bearing	2
8	LJ010200331	Motor aluminum cover	1
9	LJ010200332	6002 bearing bushing	1
10	LJ010200333	Roller big pulley	1
11	BZ130100008	5X5X18mm key	1
12	LJ120200014	Motor aluminum cover sponge pad	1

刷扣盖组装



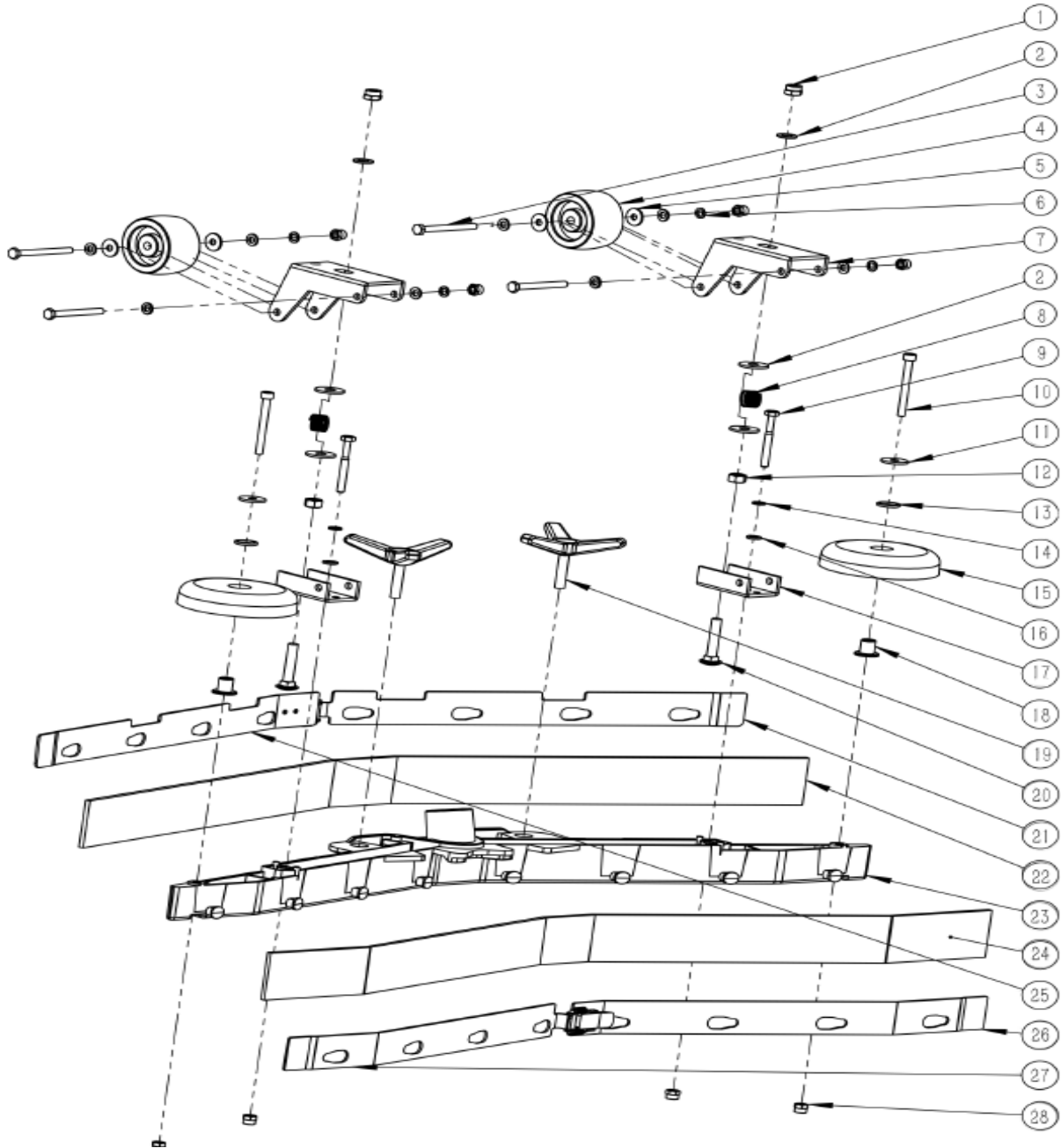
Ref.	Serail NO#	Desc.	QTY
1	BZ020100204	M8*25 Flat head hex socket screw	2
2	LJ030100243	Side rubber connector cover	1
3	LJ030200182	Side rubber	1
4	BZ020100203	M10*20 Flat head hex socket screw	1
5	LJ010200329	Roller brush aluminum cover	1
6	BZ020300009	M8 Flat mat	2
7	BZ020200011	M8 Self-locking nut	2
8	BZ030300007	Elastic pin c2.5x8	1
9	LJ010200328	Roller aligning shaft	1
10	LJ030100242	Roller brush plastic buckle	1
11	BZ030100015	Shaft clamp 15	1

电磁阀水管组装



Ref.	Serail NO#	Desc.	QTY
1	BZ010100007	∅22.6 Ear type clamp	2
2	BC05024008	65RBT solenoid valve group	1
3	BZ010100015	∅19.8 Ear clamps	1
4	BC05018012	Water valve frame group	1
5	LJ010200036	GM50B water valve pin	1
6	BZ020100038	M6*12 Hex screw	1
7	BZ070400013	∅22 Coated iron pad	2
8	LJ110100003	GM50B Solution tank filter (outlet)	1

吸水扒组件



Ref.	Serail NO#	Desc.	QTY	Ref.	Serail NO#	Desc.	QTY
1	BZ020200011	M8 Self-locking nut	4	15	LJ030100074	GM50B Bumper wheel	2
2	BZ020300010	M8 Large flat mat	6	16	BZ020300006	M6 Flat mat	6
3	BZ020100160	M8*55 Hex screw	2	17	LJ010100046	GM50B Squeegee caster under bracket	2
4	BZ020800003	GM50B Squeegee caster	2	18	LJ030100068	GM50B Bumper wheel sleeve outer C20×high 16	2
5	BZ020300009	M8 Flat mat	4	19	LJ030100077	GM50B Squeegee 3-star knob (sticky pad)	2
6	BZ020400005	M8 Spring washer	2	20	BZ020100159	M8*45 Square neck screw	2
7	LJ010100045	GM50B Squeegee caster upper bracket	2	21	LJ010100065	GM70BT Retainer metal 3	1
8	LJ010300001	GM50B Squeegee caster bracket spring	2	22	LJ030200029	GM110BT70 Squeegee rear blade (red)	1
9	BZ020100120	M6*55 Hex screw	4	23	LJ010100062	GM70BT Squeegee frame	1
10	BZ020100044	M6*60 hex socket	2	24	LJ030200028	GM110BT70 Squeegee front blade (red)	1
11	BZ020300007	M6 Large flat mat	2	25	LJ010100066	GM70BT Retainer metal 4	1
12	BZ020200010	M8 Nut	2	26	LJ010100063	GM70BT Retainer metal 1	1
13	BZ070400009	GM50B Squeegee caster shaft sleeve	2	27	LJ010100064	GM70BT Retainer metal 2	1
14	BZ020400004	M6 Spring washer	4	28	BZ020200009	M6 Self-locking nut	6