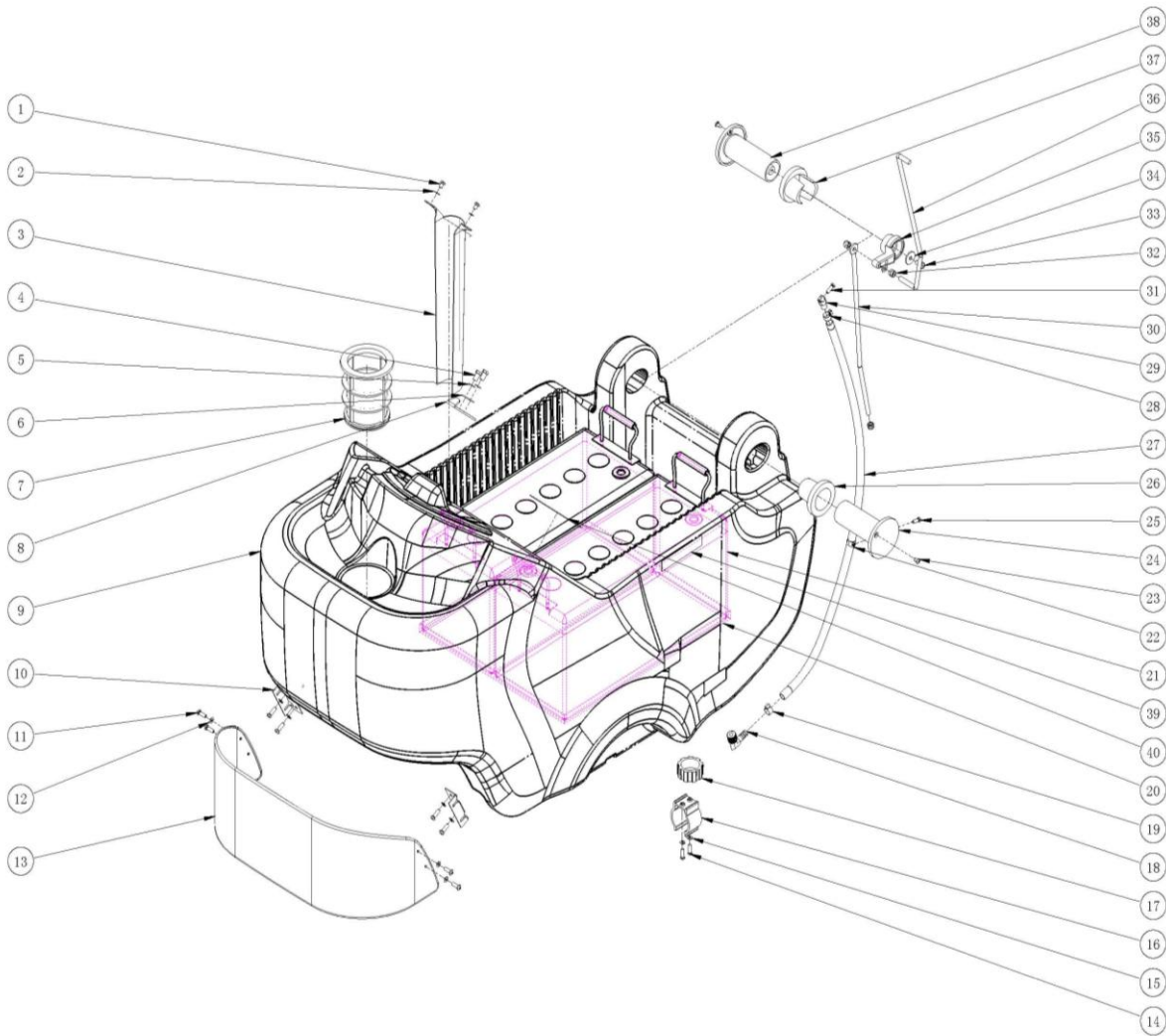


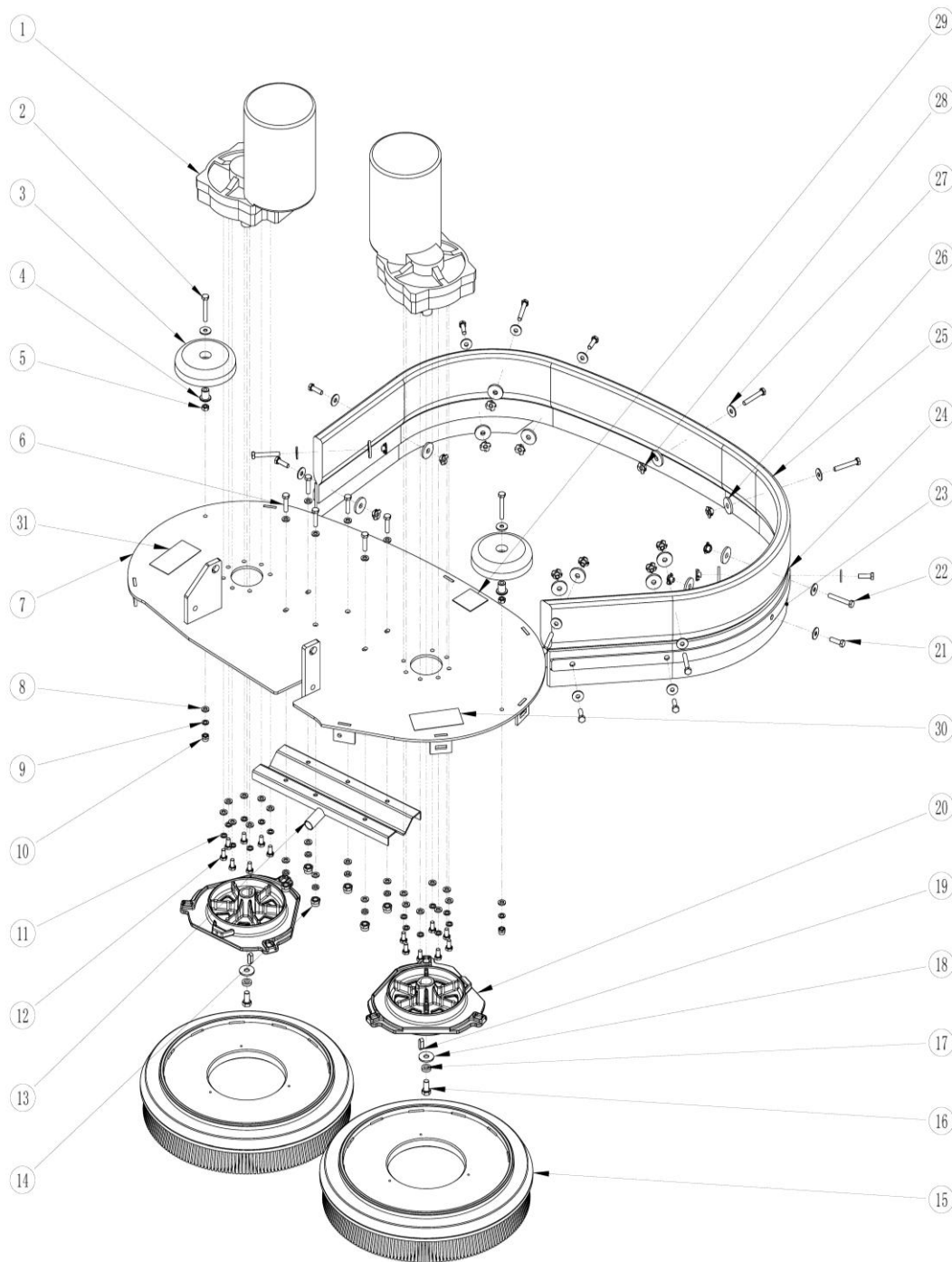
Water Supply Components

NO	Article#	QTY	DESC
1	LJ080500001	1	ç 16 Wire Hose
2	LJ040400003	1	GM70BT solenoid valve
3	LJ080200008	1	GM50B clean water pipe
4	BZ010100015	1	ç 19.8 ear clamps
5	LJ010200036	1	GM50B water valve pin
6	BZ010100016	1	ç 21 ear type clamp
7	BZ020100038	1	M6*12 outer-hexagonal
8	LJ100100001	1	GM50B water valve body
9	LJ010100040	1	GM50B Water valve handle
10	LJ110100003	1	GM50B solution tank filter (outlet)
11	BZ010100007	2	ç 22.6 ear type clamp
12	BZ010300001	1	ç 25 stainless steel wire clip
13	LJ100100004	1	GM50B hollow gong
14	BZ070400013	2	ç 22 coated iron pad



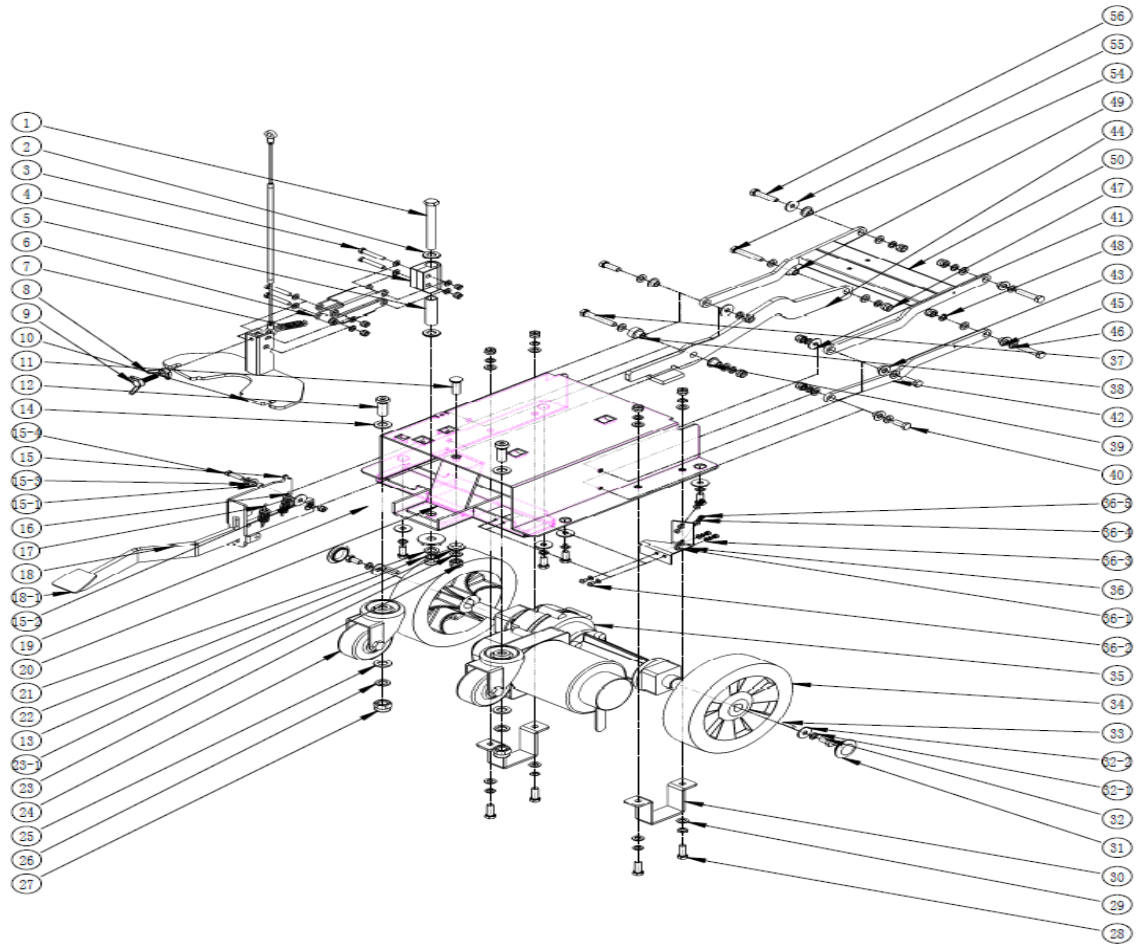
Solution Tank Assembly

NO	Article#	QTY	DESC	NO	Article#	QTY	DESC
1	BZ020100010	2	M4*10 head cross head	22	BZ010200001	1	∅ 12mmR type clip
	BZ020400002	2	M4 Spring washer	23	BZ020100018	2	ST4*10 Pan head cross self tapping
2	BZ020300002	2	M4 Flat mat	24	LJ030100055	1	GM50B box connection decorative cover bush
3	LJ010200047	1	GM70BT vacuum motor exhaust pipe cov	25	BZ020100010	1	M4*10 head cross head
4	BZ020100038	2	M6*12 outer-hexagonal		BZ020300002	1	M4 Flat mat
5	BZ020400004	2	M6 Spring washer	26	LJ030100054	2	GM50B box connection decorative cover bush
6	BZ020300006	2	M6 Flat mat	27	LJ080200012	1	GM110 transparent tube
7	LJ110100002	1	GM50B water inlet filter	28	BZ010100013	2	∅ 12.8 ear type clamp
8	LJ010100037	1	GM50B Recovery tank deputy handle	29	LJ030100164	1	Plug ∅ 8 tracheal fixed joint
9	LJ070100024	1	GM70BT solution tank 70L (grey)	30	LJ010100042	1	GM50B Water valve under rod
10	LJ010100077	2	GM70BT brush cover left bracket	31	BZ020100018	1	ST4*10 Pan head cross self tapping
	BZ020100008	4	M4*12 head cross head		BZ020300005	1	M5 Large flat mat
11	BZ020100006	4	M4*16 head cross head	32	BZ020200009	3	M6 self-locking nut
12	BZ020400002	8	M4 Spring washer		BZ020300006	2	M6 Flat mat
13	LJ070300001	1	GM70BT brush cover (black)		BZ020100042	1	M6*25 outer-hexagonal
14	BZ020100008	2	M4*12 head cross head	33	BZ020100113	1	M6*20 Hex Socket
	BZ020400002	2	M4 Spring washer	34	BZ020300007	1	M6 Large flat mat
15	BZ020300002	2	M4 Flat mat	35	LJ030100065	1	GM50B water valve shaft
16	LJ030100075	1	GM50B Drain hose support	36	LJ010100082	1	GM70BT Water valve upper rod
17	LJ030100067	1	GM50B solution tank plug	38	LJ030100080	1	GM50B box connection decorative cover (internal tapping)
18	LJ010500075	1	G 1/8 outer wire * ∅ 8 right angle elbow	39	LJ160100056	2	PreciselyRight label (side label)
19	BZ010100015	2	∅ 19.8 ear clamps	40	LJ160100072	1	Battery notice label(small)
20	LJ030100018	1	GM70BT battery base	41	LJ160200053	1	Logo (Front label)
21	LJ060100002	2	GM70BT battery				



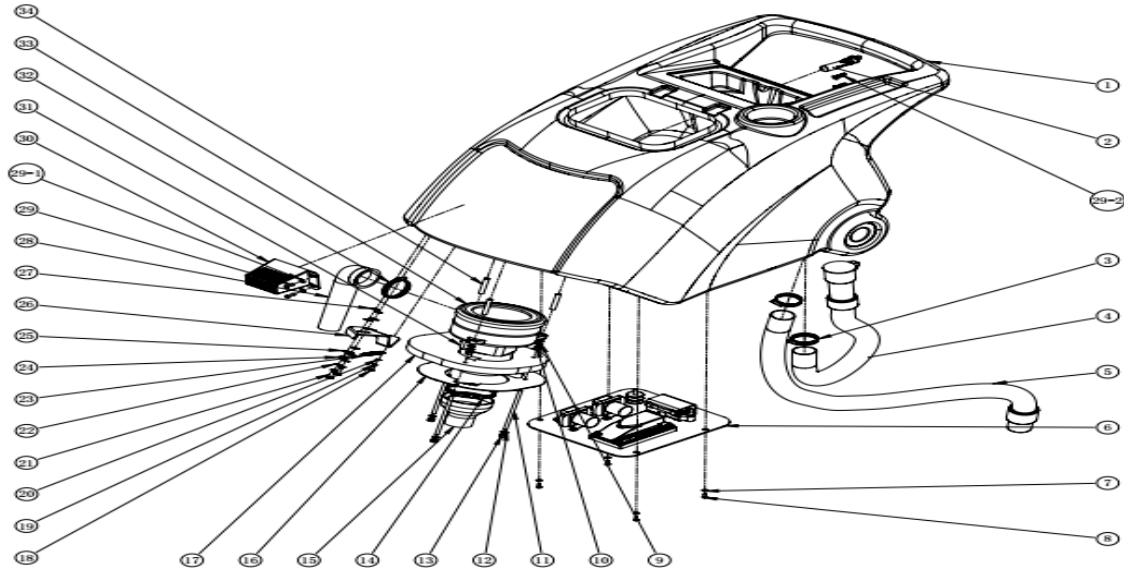
Floor Brush Assembly

NO	Article#	QTY	DESC	NO	Article#	QTY	DESC
1	LJ040100001	2	GM70BT brush motor	18	BZ020300009	2	M8 Flat mat
2	BZ020100037	2	M6*35 outer-hexagonal	19	BZ130100003	2	6X6X30mm key
	BZ020300007	2	M6 Large flat mat	20	LJ010100084	2	GM70BT automatic brush buckle
3	LJ030100074	2	GM50B guide wheel		LJ010300008	2	GM70BT brush buckle shrapnel
4	LJ030100068	2	GM50B guide wheel liner outer \varnothing 20 x high		BZ020100009	2	M4*12 small head cross
5	BZ020200008	2	M6 nuts		BZ020300002	2	M4 Flat mat
6	BZ020100035	6	M6*16 outer-hexagonal		BZ020400002	2	M4 Spring washer
7	LJ010100068	1	GM70BT motor mounting plate	21	BZ020100035	8	M6 * 16 outer-hexagonal
8	BZ020300006	14	M6 Flat mat	22	BZ020100037	6	M6*35 outer-hexagonal
9	BZ020400004	28	M6 Spring washer	23	LJ030200002	2	GM70BT small leather strip
10	BZ020200009	2	M6 self-locking nut	24	LJ010100059	2	GM70BT leather strip stainless steel
12	BZ020100035	14	M6*16 outer-hexagonal	25	LJ130300001	1	GM70BT motor mounting plate
13	LJ010100083	1	GM70BT water cover	26	LJ030300007	14	Mini front drive shield
14	BZ020200009	6	M6 self-locking nut	27	BZ020300007	14	M6 Large flat mat
15	LJ050100027	2	Floor brush	28	BZ020200018	14	GM70BT M6 leather nuts
16	BZ020100077	2	M8*16 outer-hexagonal	29	LJ160100049	1	Brush safe warning label
17	BZ020400005	2	M8 Spring washer	30	LJ160100048	2	Brush anticollision warning label



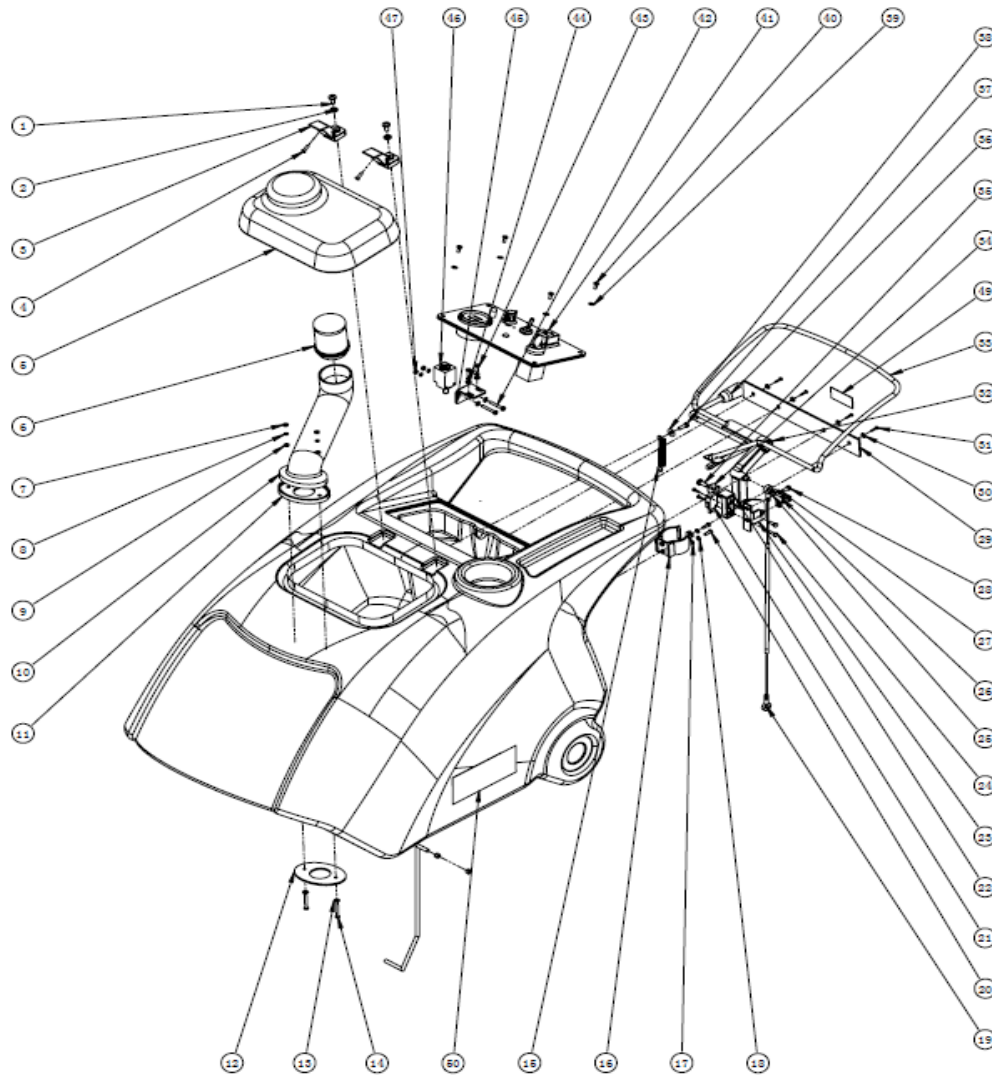
Foundation assembly

NO	Article#	QTY	DESC	NO	Article#	QT	DESC
1	BZ020100069	1	M12*100 outer-Hexagonal (L 25mm, black, iron,	28	BZ020100063	4	M8*20 outer-hexagonal
2	BZ020300013	7	M12 flat mat(stainless steel)	29	BZ020300009	4	M8 flat mat
3	BZ020100040	4	M6 * 45 outer-Hexagonal	30	LJ010100274	2	GM70BT U type clamp
3.1	BZ020200009	4	M6 self-locking nut	31	LJ030100193	2	70BT die-cast aluminum alloy wheel hub cover (blue)
3.2	BZ020400004	4	M6 Spring washer	32	BZ020100035	2	M6*16 outer-hexagonal
3.3	BZ020300006	8	M6 flat mat		BZ020400005		M8 Spring washer
4	LJ010200243	1	GM50B Squeegee guide		BZ020300008		M6 Extra large flat mat
5	LJ010500012	1	GM50B Squeegee guide copper sleeve	33	BZ130100001	2	6X6X50mm key
6	LJ010100031	1	GM50B squeegee adjust connector	34	LJ030200160	2	70BT Die-cast aluminum alloy rear wheels
7	LJ010300006	1	GM50B squeegee spring	35	LJ040100032	2	GM70BT drive motor
8	BZ020200012	1	M8 Claw nut	36	LJ010100281	1	70B solenoid valve holder
9	BZ020100071	1	M8*30 claw screw		BZ020100008		M4*12 head cross head
10	LJ010100024	1	GM50B Squeegee bracket		BZ020100022		M4*16 outer-hexagonal
11	BZ020100066	1	M10*25 flat head Hex Socket		BZ020700001		M4 rivet nut 4X11
12	BZ020100085	2	M12*40 Hex Socket(12.9)		BZ020300002		M4 flat mat
13	BZ020300012	1	M10 flat mat		BZ020400002		M4 Spring washer
	BZ020400006	1	M10 Spring washer		BZ020200004		M4 self-locking nut
15	LJ010100075	1	GM70BT brush adjust fixed plate	37	BZ020100142	1	M8*50 outer-Hexagonal (12.9)
15.1	LJ010500013	1	GM50B Brush adjust fixed plate purple copper	38	LJ010200035	2	GM50B forearm lever copper bush outer c 20 x height 19mm
15.2	BZ020300007	1	M6 Large flat mat	39	LJ010200039	1	GM50B brush plate lift pedal copper bush outer c 20 x high
15.3	BZ070400001	1	GM50B PTFE gasket (thick)	40	BZ020100061	3	M8*35 outer-Hexagonal
15.4	BZ020100034	1	M6*20 outer-hexagonal	41	LJ010200040	1	GM50B motor connection copper bush outer c 20 x high 8mm
15.5	BZ020300009	1	M8 flat mat	42	LJ010100072	1	GM70BT motor connector
15.6	BZ020200004	1	M4 self-locking nut	44	LJ010100071	1	GM70BT forearm lever
15.7	BZ020200009	1	M6 self-locking nut	46	BZ020300009	8	M8 flat mat
16	LJ010300005	1	GM50B brush plate lift pedal spring	47	BZ020200011	8	M8 self-locking nut
17	LJ010300004	1	GM50B brush plate adjust spring	48	BZ020400005	8	M8 Spring washer
18	LJ010100070	1	GM70BT brush plate lift pedal	50	LJ010100069	1	GM70BT motor connection bracket
	BZ100100002	1	GM50B pedal leather	53	BZ020300010	8	M8 Large flat mat
19	LJ010100313	1	GM56BT baseplate	54	BZ020100062	1	M8*45 outer-Hexagonal
20	LJ010100079	1	GM70BT tail wheel support board				
21	BZ020400007	3	M12 Spring washer				
22	BZ020200016	3	M12 self-locking nut				
23	BZ020200014	1	M10 self-locking nut				
24	BZ080100001	2	GM50B universal wheel				



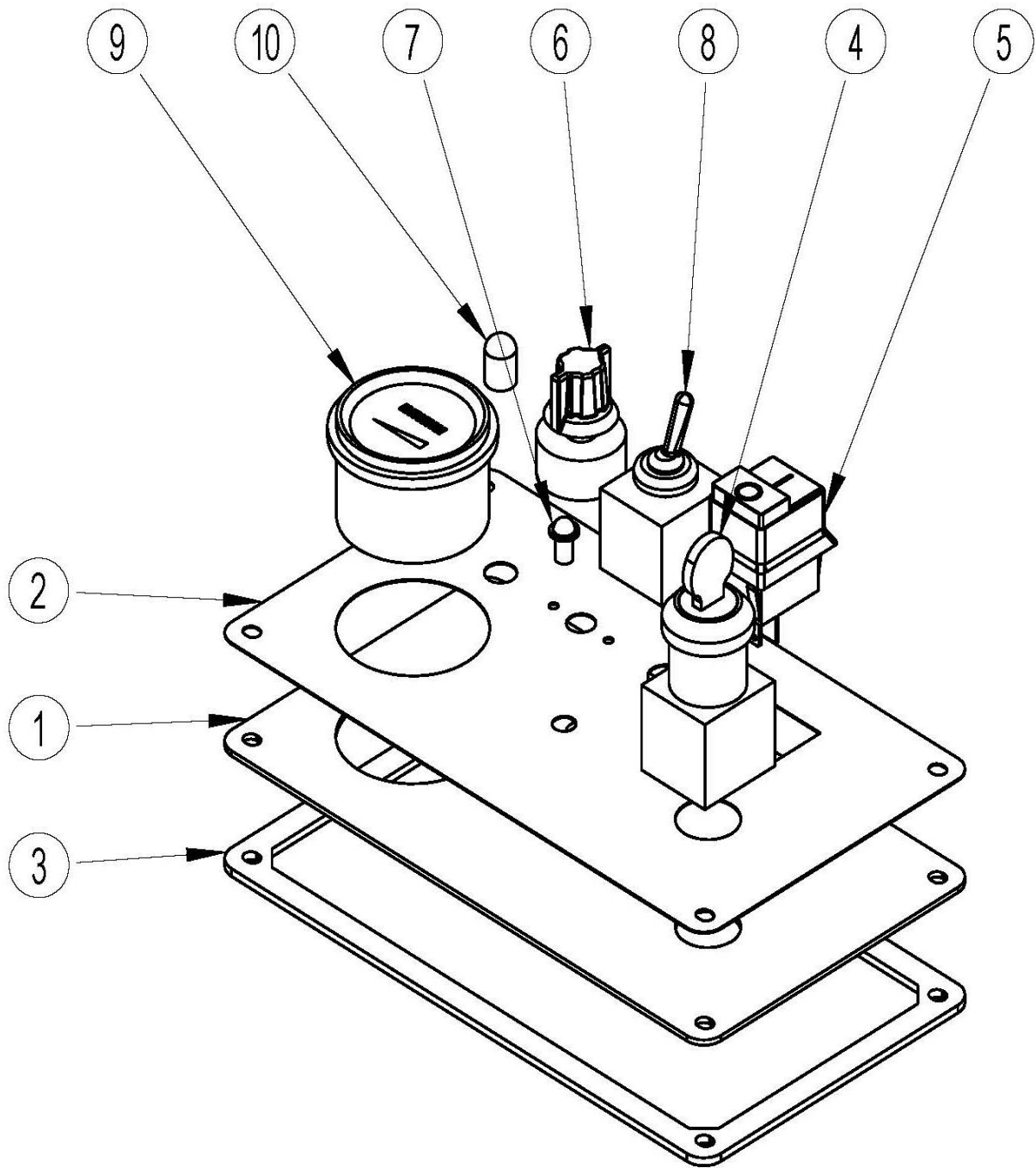
Recovery Tank II

NO	Article#	QT	DESC	NO	Article#	QTY	DESC
1	LJ070200002	1	GM70BT Recovery tank 70L grey	20	BZ020300002	1	M4 Flat mat
2	LJ020600003	1	GM50B waste water sensor (small)	21	BZ020100035	2	M6*16 outer-hexagonal
3	BZ010100005	2	c 27-51 Adjustable ear type clamp	22	BZ020300007	2	M6 Large flat mat
4	LJ080100012	1	GMmini / GM50B / GM70BT Drain hose (black)		BZ020400004	2	M6 Spring washer
5	LJ080100011	1	GM50B/GM70BT Vacuum hose(black)	23	LJ010300007	1	GM50B Recovery tank main handle spring
6	BC05006011	1	70B electrical installation board components	24	LJ010200038	2	GM50B Recovery tank main handle copper bush outerC 16 x high 6mm
7	BZ020300002	4	M4 Flat mat	25	BZ070400002	4	GM50B PTFE gasket (thin)
8	BZ020100012	4	M4 * 8 head cross head	26	LJ010100033	1	GM50B Recovery tank main handle
9	BZ020400004	3	M6 Spring washer	27	BZ020300006	1	M6 Flat mat
10	BZ020200008	3	M6 nuts	28	LJ030200011	1	GM50B Vacuum motor exhaust pipe
11	BZ021000001	3	GM50B 2-layer vacuum motor mounting screw M6x100mm (two half	29	BZ020100019	2	ST4*12 Pan head cross self tapping
12	BZ020300006	6	M6 Flat mat	29-1	BZ020300003	4	M4 Large flat mat
13	BZ020200009	1	M6 self-locking nut	29-2	BZ020200004	2	M4 self-locking nut
14	BZ010100006	1	c 70-90 adjustable ear type clamp	30	LJ030100061	1	GM50B sensor cover
15	LJ030200010	1	GM50B vacuum motor suction hood	31	LJ040200002	1	GM50B 2-layer vacuum motor
16	LJ010100028	1	GM50B vacuum motor dust board	32	BZ010100005	1	c 27-51 Adjustable ear type clamp
17	LJ120100001	1	GM50B non-stick silence cotton	33	LJ030200009	1	GM50B Vacuum motor mat
18	BZ020100010	1	M4*10 head cross head	34	LJ010500071	1	GM70BT 2-layer motor mounting screw
19	BZ020400002	1	M4 Spring washer				



Recovery Tank I

NO	Article#	QTY	DESC	NO	Article#	QTY	DESC
1	BZ020100008	2	M4*12 head cross head	28	BZ020100038	2	M6*12 outer-hexagonal
2	BZ020300002	2	M4 Flat mat	29	LJ010100030	1	GM50B switch arm cover
3	LJ030200007	2	GM50B Recovery tank transparent cover	30	BZ020300002	4	M4 Flat mat
4	BZ020100010	2	M4*10 head cross head	31	BZ020100022	4	M4*16 outer-hexagonal
5	LJ030100058	1	GM50B Recovery tank transparent cover	32	LJ030100062	1	GM50B squeegee lift handle
6	LJ110200001	1	GM50B Recovery tank filter transparent	33	LJ010100353	1	GM70BT drive switch handle
7	BZ020200004	2	M4 self-locking nut	34	BZ020300009	1	M8 Flat mat
8	BZ020400002	2	M4 Spring washer	35	BZ020100038	1	M6*12 outer-hexagonal
9	BZ020300002	2	M4 Flat mat	36	LJ010100043	1	GM50B water handle
10	LJ070300002	1	GM50B Recovery tank filter elbow (grey)		LJ030100072	1	GM50B Water Handle Decorative Set
11	LJ030200157	1	GM50B Vacuum hose pad	37	BZ020100023	1	M5*16 head cross head
12	LJ010100055	1	GM50B Recovery tank filter iron pad	38	BZ020300005	1	M5 Large flat mat
13	BZ020300003	2	M4 Large flat mat		BZ020400003	1	M5 Spring washer
14	BZ020100016	2	M4*35 small head cross	39	BZ020300002	4	M4 Flat mat
15	LJ010300010	1	GM70BT drive switch handle spring	40	BZ020100010	4	M4*10 head cross head
16	LJ030100075	1	GM50B Drain hose bracket	41			See Control Panel Components
17	BZ020300002	2	M4 Flat mat	42	BZ020100133	2	M4*30 head cross head
18	BZ020400002	2	M4 Spring washer	43	BZ020100008	2	M4*12 head cross head
19	BZ110100002	1	GM70BT Squeegee bracket lift drawing	44	BZ020300002	4	M4 Flat mat
20	BZ020100008	2	M4*12 head cross head		BZ020400002	4	M4 Spring washer
21	LJ020100008	1	GM50B single pole micro switch	45	LJ010100074	1	GM70BT motor switch mounting plate
22	LJ010100036	1	GM50B micro switch mounting plate	46	LJ020100033	1	Proximity switch
23	LJ010100034	1	GM50B Squeegee lift bracket	47	BZ020200004	2	M4 self-locking nut
24	BZ020100021	2	M4*12 outer-hexagonal	48	LJ160100040	2	GM70BT Model label
25	BZ020300005	1	M5 Extra large flat mat	49	LJ160100047	1	Machine maintenance warning label
26	BZ020100018	1	ST4*10 Pan head cross self tapping	50	LJ160200047	1	QR code label
27	BZ020300006	2	M6 Flat mat	51	LJ160100046	1	Recovery tank maintenance warning



Control Panel

NO	Article#	QTY	DESC
1	LJ010100073	1	GM70BT control panel
2	LJ160200004	1	GM70BT panel label
3	LJ120100002	1	GM50B control panel gasket
4	LJ020100005	1	GM50B Main power switch
5	LJ020100002	1	GM50B Brush and vaccum power switch
6	BZ060100002	1	GM70BT speed switch
7	LJ021300001	1	Fault indicator
8	LJ020100024	1	70B directional switch (with cap)
9	LJ020500003	1	GM70BT battery gauge 24v
10	LJ020300008	1	5A protector (with waterproof cap)

