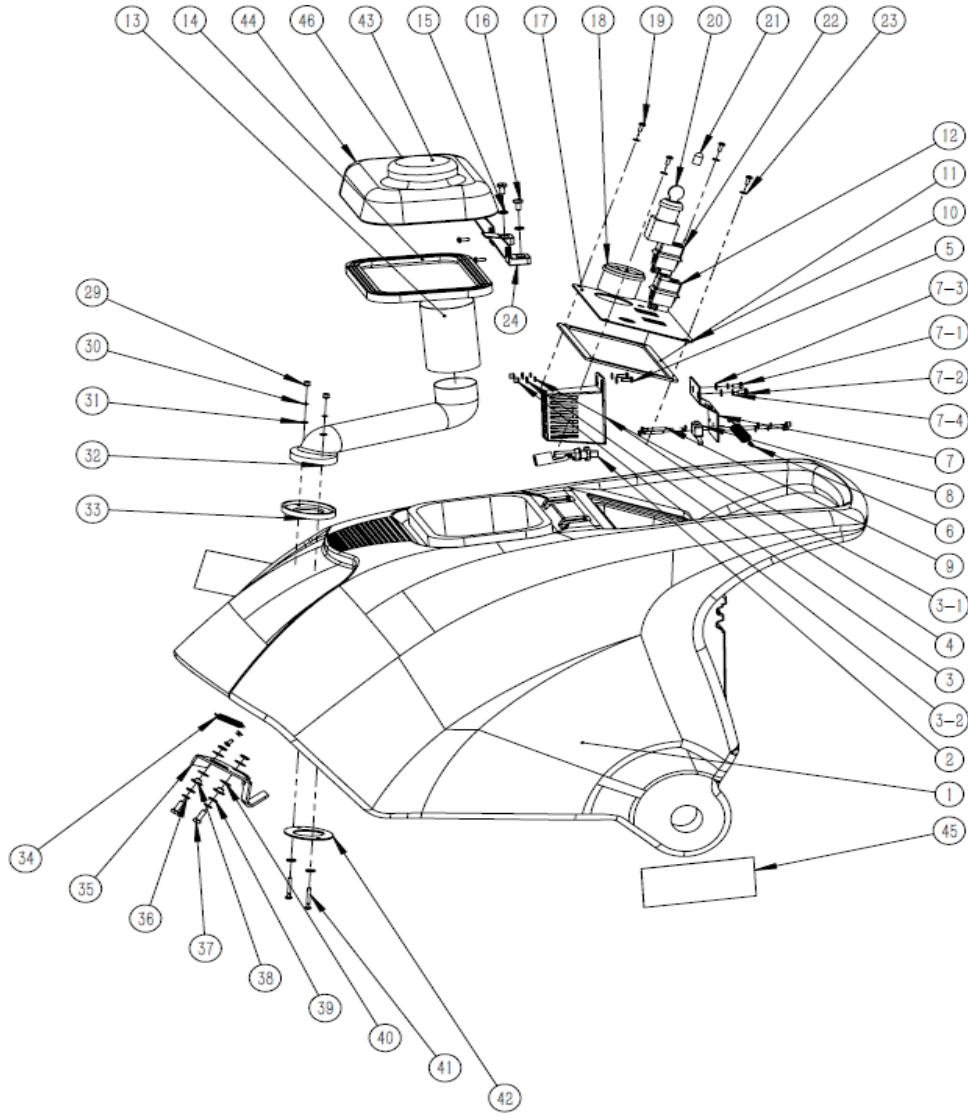
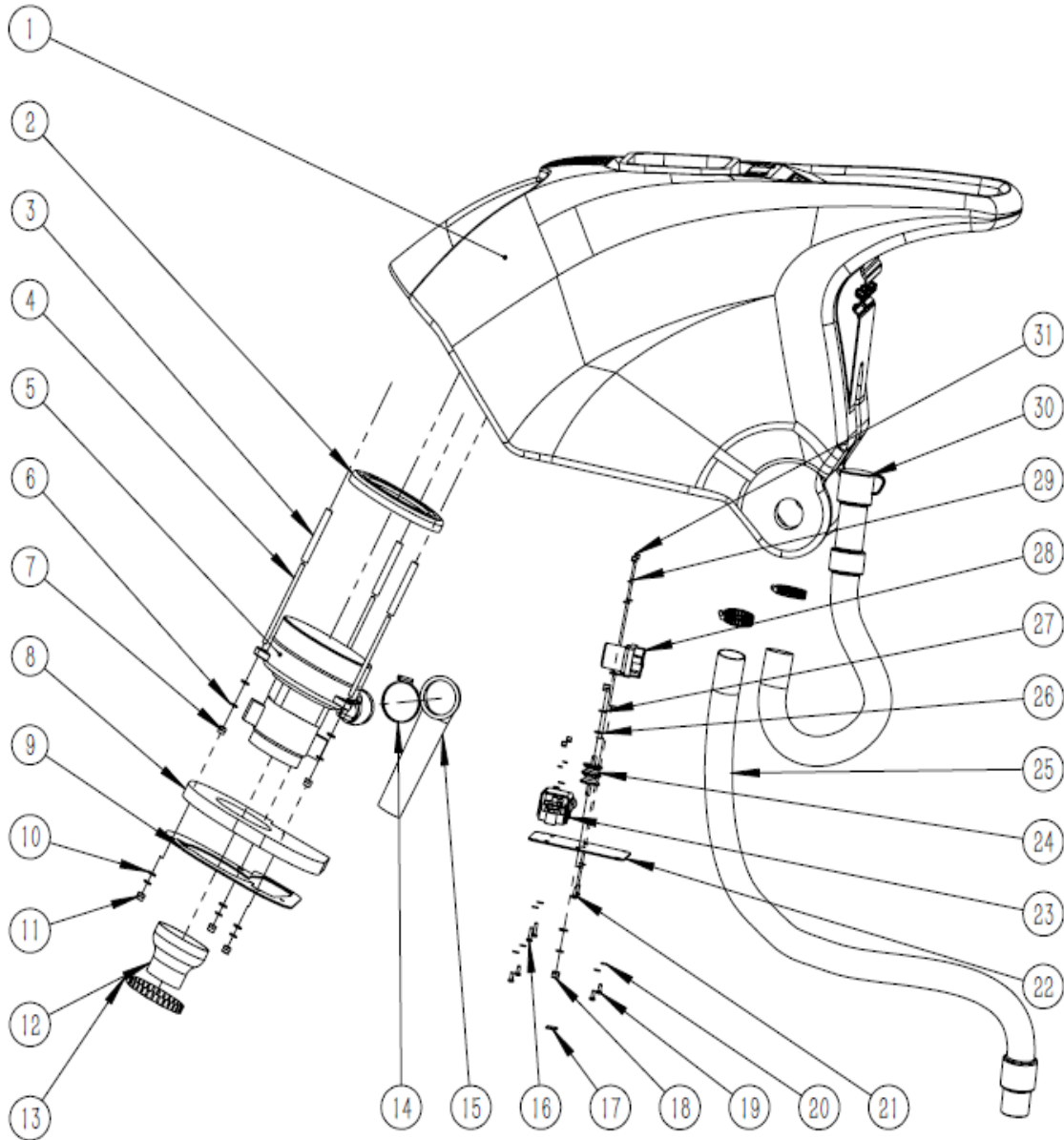


GM50B RECOVERY TANK GROUP I

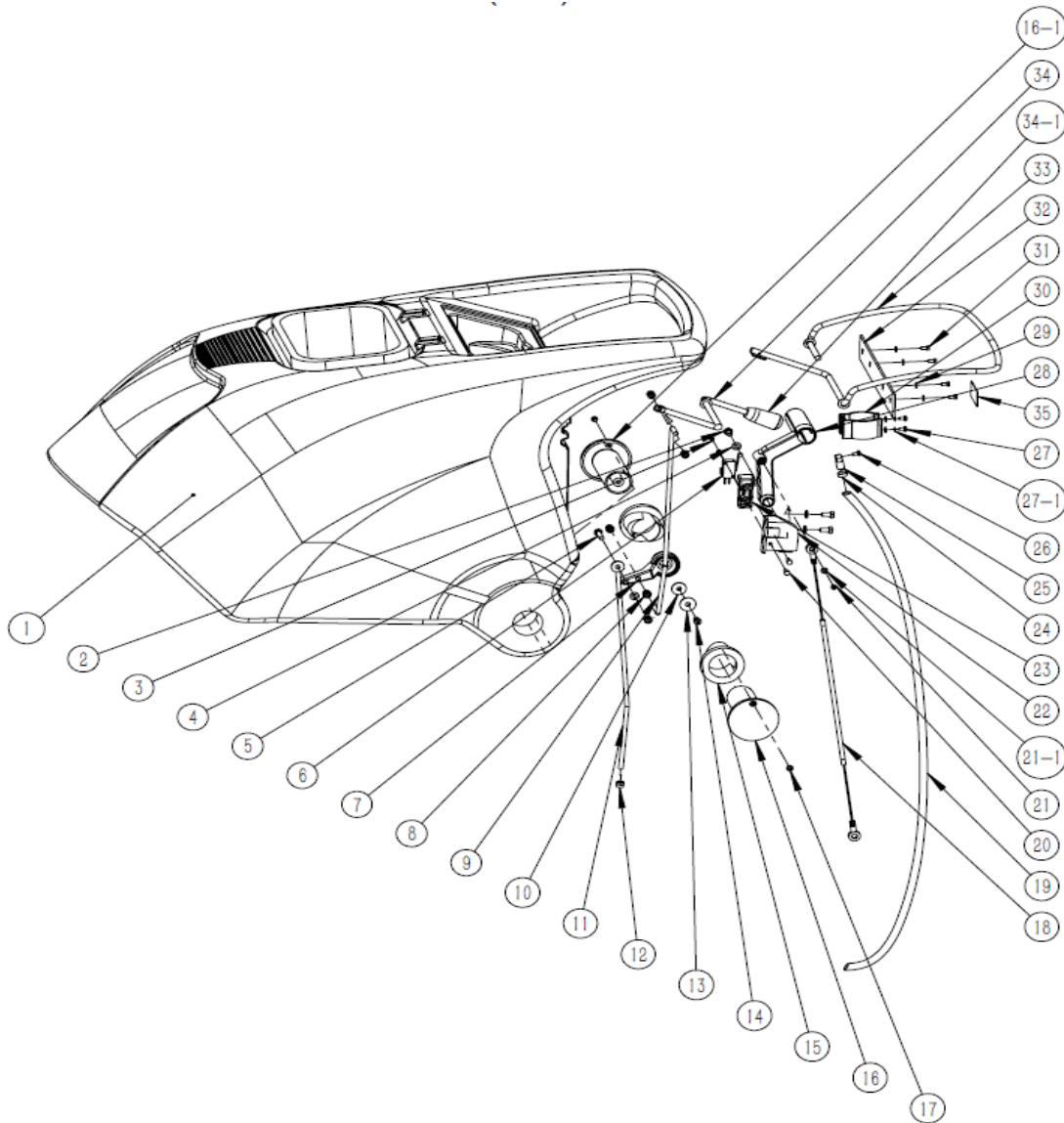


Ref.	Serail NO#	Desc.	QTY	Ref.	Serail NO#	Desc.	QTY
1	LJ070200001	GM50B Recovery tank 50L (Grey)	1	19	BZ020100010	M4*10 Big pan head cross screws	4
2	LJ020600003	GM50B Waste water sensor (Small)	1	20	LJ020100005	50B Main power switch	1
3	BZ020300003	M4 Large flat mat	2	21	LJ020300008	5A Protector (with waterproof cap)	1
3-1	BZ020400002	M4 Spring washer	5	22	LJ020100002	GM50B Brush & suction power switch	1
3-2	BZ020200004	M4 Self-locking nut	2	23	BZ020300002	M4 Flat mat	4
4	LJ030100061	50B Sensor cover	1	24	LJ030200007	GM50B Recovery tank transparent cover hir	2
5	BZ020100006	M4*16 Big pan head cross screws	2	29	BZ020200004	M4 Self-locking nut	2
6	LJ010300009	GM50B Drive switch handle spring	1	30	BZ020400002	M4 Spring washer	2
7	LJ010100032	GM50B Motor switch mounting plate	1	31	BZ020300003	M4 Large flat mat	2
7-1	BZ020100026	STM5*16 Self-tapping screws	1	32	LJ070300002	GM50B Recovery tank filter elbow (Grey)	1
7-2	BZ020100169	M5*12 Big head cross screws	1	33	LJ030200157	GM50B Suction duct leather cushion	1
7-3	BZ020300004	M5 Flat mat	2	34	LJ010300007	GM50B Recovery tank main handle spring	1
7-4	BZ020400003	M5 Spring washer	2	35	LJ010100033	GM50B Recovery tank main handle	1
8	LJ020100023	GM50B Chint micro switch	1	36	BZ020400004	M6 Flat mat	2
9	BZ020100133	M4*30 Big head cross screws	2	37	BZ020100035	M6*16 hex screw	2
10	LJ010100029	GM50B Control panel	1	38	LJ010200038	GM50B Recovery tank main handle copper liner outer \varnothing 16×High 6mm	2
11	LJ120100002	GM50B Control panel Seal	1	39	BZ020300007	M6 Large flat mat	4
12	LJ020100002	GM50B Brush & suction power switch	1	40	BZ070400002	GM50B Ptfе gasket (thin)	4
13	LJ110200001	GM50B Recovery tank filter (Grey)	1	41	BZ020100014	M4*20 Big pan head cross screws	2
14	LJ030200166	50B Transparent cover transparent leather	1	42	LJ010100055	GM50B Recovery tank filter iron pad	1
15	BZ020300006	M6 Flat mat	2	43	LJ160100046	Recovery tank maintenance warning label	1
16	BZ020100050	M6*12 big pan head cross screws	2	44	LJ030100058	GM50B Recovery tank transparent cover	1
17	LJ160200007	Panel label (GM50B)	1	45	LJ160100035	Side type label(GM50B)	1(EA)
18	LJ020500001	GM50B Battery scale 24V	1	46	LJ160200046	QR code (GAOMEI Logo)	1



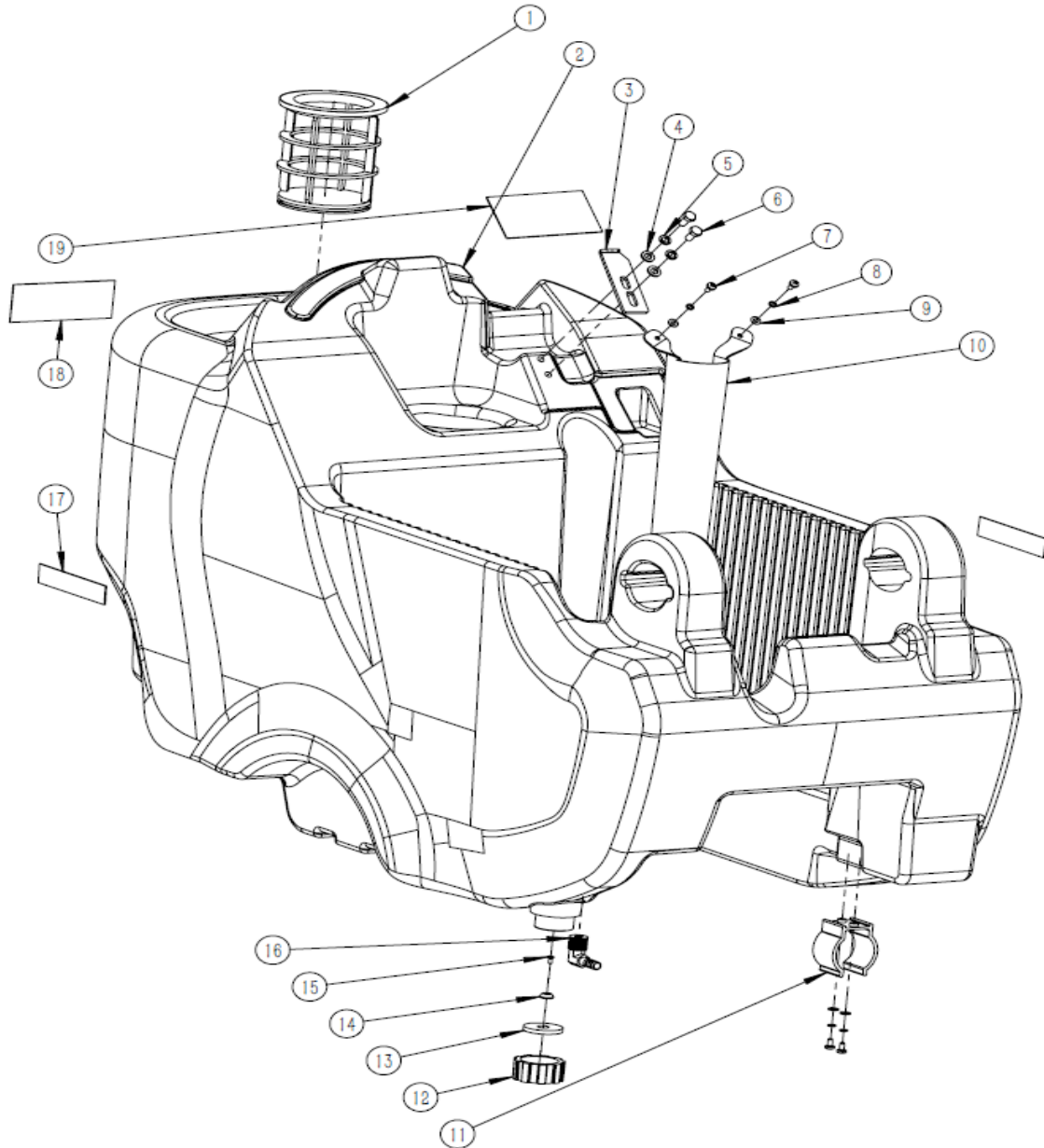
Ref.	Serail NO#	Desc.	QTY	Ref.	Serail NO#	Desc.	QTY
1	LJ070200001	GM50B Recovery tank 50L (Grey)	1	17	LJ160100050	Fuse label	1
2	LJ030200009	GM50B Vacuum motor bottom gasket	1	18	BZ020200009	M6 Self-locking nut	2
3	LJ010500064	GM50B 2-layers vacuum motor installation tube	3	19	BZ020100010	M4*10 Big pan head cross screws	4
4	BZ021000001	GM50B 2-layers vacuum motor installation threaded rod M6x100mm	3	20	BZ020300002	M4 Flat mat	12
5	LJ040200002	GM50B 2-layers vacuum motor	1	21	BZ020100008	M4*12 Big pan head cross screws	2
6	BZ020400004	M6 Spring washer	5	22	LJ010100025	GM50B electrical installation board	1
7	BZ020200008	M6 nut	3	23	LJ020300001	100A Fuse box	1
8	LJ120100001	GM50B soundproof sponge	1	24	LJ020800002	Insulator	1
9	LJ010100028	GM50B vacuum motor dust shield	1	25	LJ080100011	GM50B/GM70BT Vacuum hose (black)	1
10	BZ020300006	M6 Flat mat	6	26	BZ020300006	M6 Flat mat	2
11	BZ020200009	M6 Self-locking nut	3	27	BZ020400004	M6 Spring washer	2
12	LJ030200010	GM50B Vacuum motor suction hood	1	28	LJ020800003	DC contactor	1
13	BZ010100006	∅ 70-90 adjustable ear type clamp	1	29	BZ020400002	M4 Spring washer	4
14	BZ010100005	∅ 27-51 adjustable ear type clamp	3	30	LJ080100012	GMmini/GM50B/GM70BT Drain hose	1
15	LJ030200011	GM50B Vacuum motor exhaust duct	1	31	BZ020200004	M4 Self-locking nut	4
16	BZ020100006	M4*16 Big pan head cross screws	2				

GM50B RECOVERY TANK GROUP III



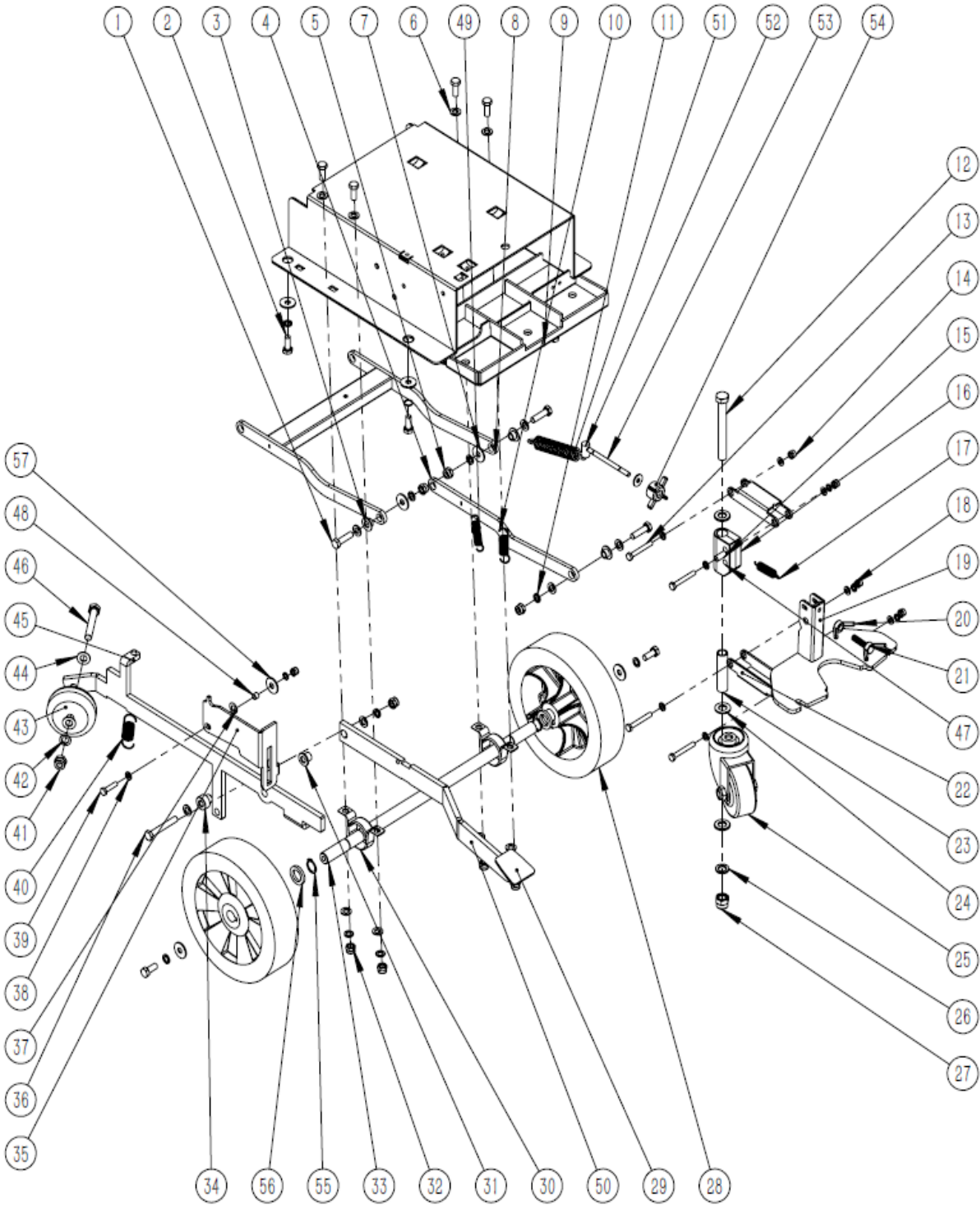
Ref.	Serail NO#	Desc.	QTY	Ref.	Serail NO#	Desc.	QTY
1	LJ070200001	GM50B Recovery tank 50L (Grey)	1	20	BZ020100021	M4*12 hex screw	2
2	BZ020100038	M6*12 hex screw	2	21	BZ020100018	ST4*10 Pan head cross self tapping	1
3	BZ020100001	M3*16 Pan head cross screws	2	21-1	BZ020300005	M5 Large flat mat	1
4	BZ020300007	M6 Large flat mat	1	22	LJ010100034	GM50B Squeegee lifting bracket	1
5	BZ020100042	M6*25 hex screw	1	23	LJ010100036	GM50B Microswitch mounting plate	1
6	LJ020100008	GM50B Single pole micro switch	1	24	BZ010100013	∅ 12.8 Ear type clamp	2
7	LJ030100065	GM50B Water valve shaft	1	25	LJ030100164	Plug ∅ 8 tracheal fixation joint	1
8	BZ020200009	M6 Self-locking nut	5	26	BZ020100007	M4*16 Small pan head cross screws	1
9	LJ010100054	GM50B Water valve upper rod	1	27	BZ020100008	M4*12 Big pan head cross screws	2
10	LJ030100069	GM50B Water valve rotating shaft liner	1	27-1	BZ020400002	M4 Spring washer	2
11	LJ010100042	GM50B Water valve under rod	1	28	LJ030100062	GM50B Squeegee lift handle	1
12	LJ010200036	GM50B Water valve pin	1	29	BZ020300002	M4 Flat mat	6
13	BZ020300007	M6 Large flat mat	1	30	LJ030100075	GM50B Drain hose bracket	1
14	BZ020100113	M6*20 Hex socket screws	1	31	BZ020100022	M4*16 hex screw	4
15	LJ030100054	GM50B Tank connector decorative cover bushing	2	32	LJ010100030	GM50B Switch arm cover	1
16	LJ030100055	GM50B Tank connector decorative cover (internal ratio tapping)	1	33	LJ010100041	GM50B Drive switch handle	1
16-1	LJ030100080	GM50B Tank connector decorative cover (internal ratio tapping)	1	34	LJ010100043	GM50B Water valve handle switch	1
17	BZ020100018	ST4*10 Pan head cross self tapping screws	2	34-1	LJ030100072	GM50B Water valve handle switch decorative cover	1
18	BZ110100009	Squeegee lift bracket wiredrawing	1	35	LJ160100047	Machine maintenance warning label	1
19	LJ080200012	GM110 transparent tube	1				

SOLUTION TANK GROUP (GM50B/GM56BT)



Ref.	Serail NO#	Desc.	QTY	Ref.	Serail NO#	Desc.	QTY
1	LJ110100002	GM50B Water inlet filter	1	11	LJ030100075	GM50B Vacuum hose bracket	1
2	LJ070100003	GM50B Solution tank 50L (Grey)	1	12	LJ030100067	GM50B Solution tank plug	1
3	LJ010100037	GM50B Recovery tank deputy handle	1	13	LJ030200012	GM50B Solution tank plug gasket	1
4	BZ020300006	M6 Flat mat	2	14	BZ020300003	M4 Large flat mat	1
5	BZ020400004	M6 Spring washer	2	15	BZ020100008	M4*12 Big pan head cross screws	3
6	BZ020100038	M6*12 hex screw	2	16	LJ010500075	G 1/8 wire outer * \varnothing 8 right-angle bend	1
7	BZ020100010	M4*10 Big pan head cross screws	2	17	LJ160100056	Side Label (CE)	0
8	BZ020400002	M4 Spring washer	4	18	LJ160200045	Front Logo (silver, GAOMEI logo)	1
9	BZ020300002	M4 Flat mat	4	19	LJ160100070	Battery warning Label (small)	1
10	LJ010200025	GM50B Vacuum motor exhaust duct	1				

DRIVE GROUP (BASE)

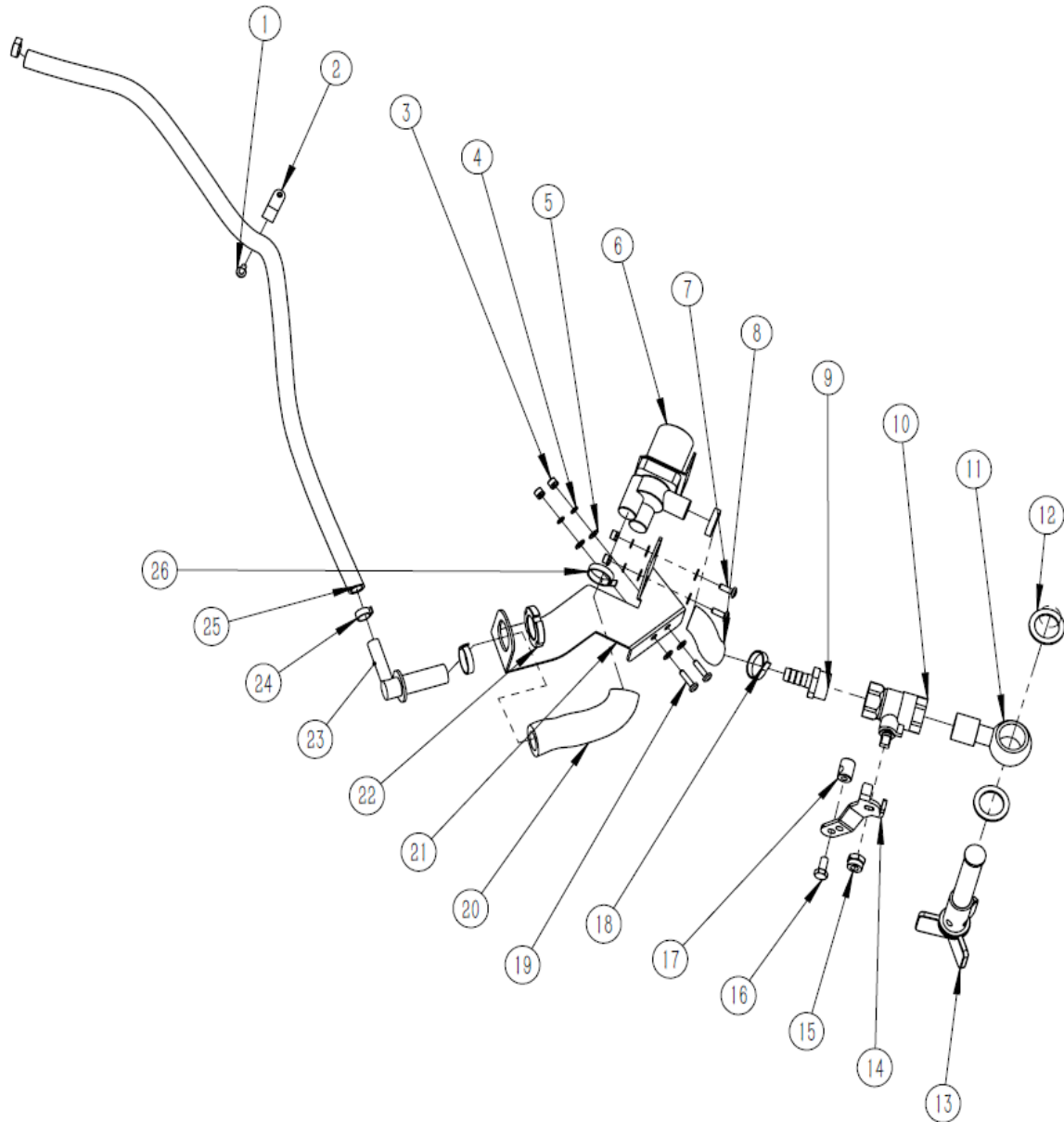


SEE NEXT PAGE

DRIVE GROUP (BASE)

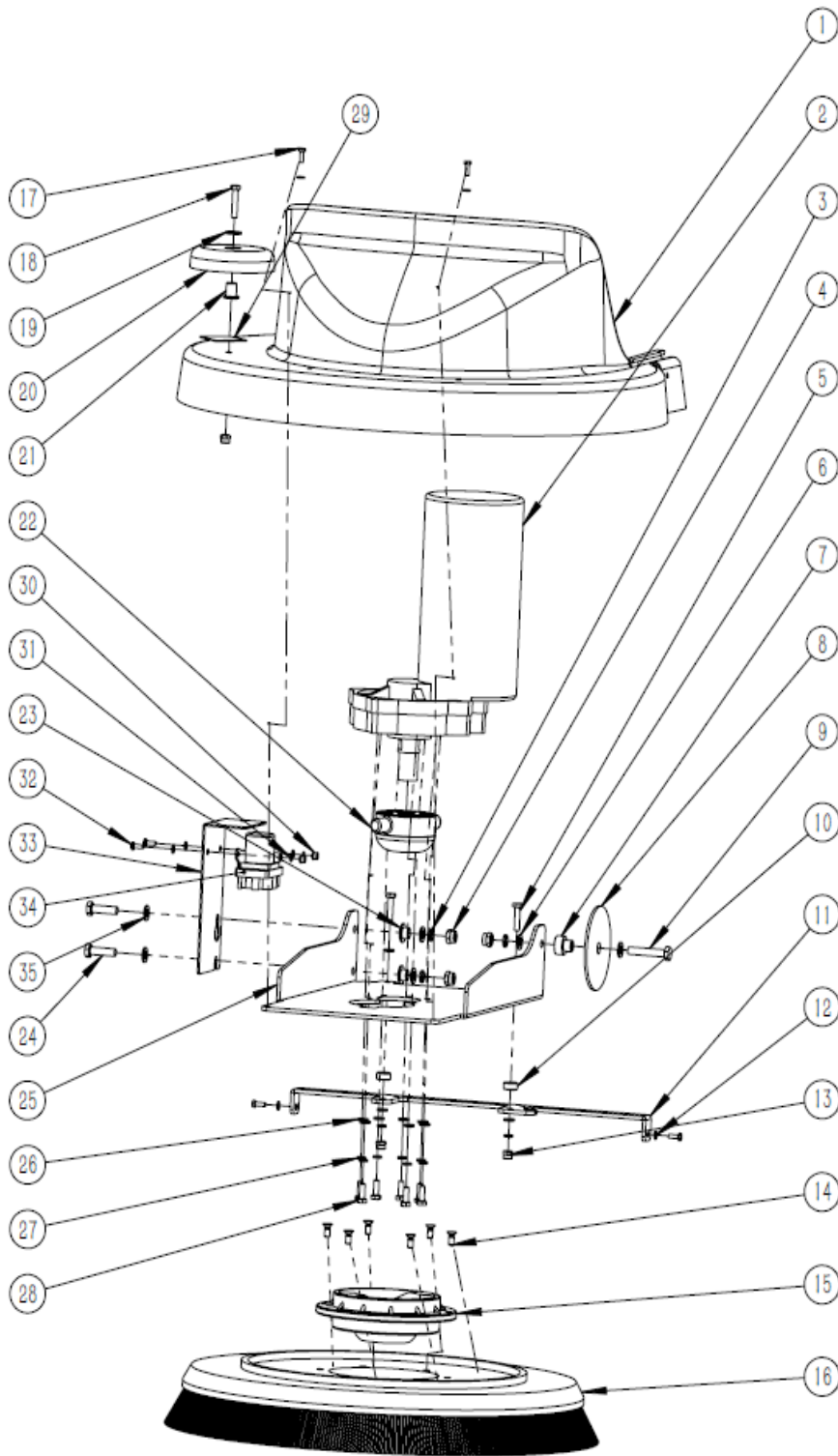
Ref.	Serail NO#	Desc.	QTY	Ref.	Serail NO#	Desc.	QTY
1	BZ020100060	M8*30 hex screw	3	30	BZ040200003	Bracket bearing SB203+PP203	2
2	BZ020100063	M8*20 hex screw	4	31	LJ010200039	GM50B Brush head lift pedal copper liner Outer \varnothing 20×High 13mm	1
3	LJ010200040	Motor connection copper bush	3	32	BZ020200011	M8 Self-locking nut	8
4	LJ010100027	GM50B Motor connection part	1	33	LJ010200026	GM50B Scrubber wheel hub	1
5	BZ020200011	M8 Self-locking nut	8	34	LJ010200035	GM50B Forearm lever copper liner Outer \varnothing 20×High 19mm	1
6	BZ020300011	M8 Extra large flat mat	4	35	LJ010100035	GM50B Brush head adjust fixed board	1
7	BZ020300010	M8 Large flat mat	4	36	BZ020100142	M8*50 hex screw (12.9)	1
8	LJ010100022	GM50B Motor connection bracket	1	37	BZ070400001	GM50B PTFE gasket (thick)	1
9	LJ010100020	GM50B Frame	1	38	BZ020300006	M6 Flat mat	9
10	LJ010300005	GM50B Brush head lift pedal spring	1	39	BZ020100034	M6*20 hex screw	1
11	BZ020400005	M8 Spring washer	8	40	LJ010300003	GM50B Pinch roller height adjust spring	1
12	BZ020100069	M12*100 hex screw (L 25mm long, black, iron, 8.8)	1	41	BZ020200014	M10 Self-locking nut	1
13	BZ020100197	M6*55 Hex Scotket screws	4	42	BZ020400006	M10 Spring washer	1
14	BZ020200009	M6 Self-locking nut	5	43	BZ080200002	GM50B Pinch roller	1
15	LJ010500014	GM50B Squeegee bracket sleeve	1	44	BZ020300012	M10 Flat mat	3
16	LJ010200243	Squeegee guding connection part	1	45	LJ010100053	GM50B forearm lever B (short high)	1
17	LJ010300006	GM50B Squeegee spring	1	46	BZ020100067	M10*60 hex screw (L 40mm)	1
18	BZ020400004	M6 Spring washer	5	47	LJ010500069	50B Squeegee guding connection part	2
19	LJ010100024	GM50B Squeegee bracket	1	48	LJ010500013	GM50B Brush head adjust fixed board purple copper tube	1
20	BZ020200012	M8 Claw nut	1	49	LJ010300004	GM50B Brush head adjust spring	1
21	BZ020100071	M8*30 Claw screw	1	50	LJ010100023	GM50B Brush head lift pedal	1
22	LJ010100031	Squeegee adjust connecter	2	51	LJ010300002	GM50B Pinch roller adjust spring	1
23	LJ010500012	GM50B Squeegee guiding connection copper sleeve	1	52	LJ010200041	GM50B forearm adjust spring pin	1
24	BZ020300013	M12 Flat mat(stainless steel)	3	53	BZ021000004	GM50B forearm adjust screw M6×125mm (cuitsilk)	1
25	BZ080100001	GM50B Squeegee caster (universal)	1	54	BZ120100005	M6 Tetragonal nut	1
26	BZ020400007	M12 Spring washer	1	55	BZ030100007	17 shaft clip	2
27	BZ020200016	M12 Self-locking nut	1	56	BZ020300024	M18 Flat mat	2
28	LJ030200076	GM50B Scrubber wheel (black)	2	57	BZ020300007	M6 Large flat mat	2
29	BZ100100002	50B Pedals holster	1				

WATER SUPPLY GROUP



Ref.	Serail NO#	Desc.	QTY	Ref.	Serail NO#	Desc.	QTY
1	BZ020100010	M4*10 Big pan head cross screws	1	14	LJ010100040	GM50B Water valve handle	1
2	BZ010200001	∅ 12mm R-type clip	1	15	BZ020200009	M8 Nut	1
3	BZ020200004	M4 Self-locking nut	2	16	BZ020100038	M6*12 hex screw	1
4	BZ020400002	M4 Spring washer	4	17	LJ010200036	GM50B Water valve pin	1
5	BZ020300002	M4 Flat mat	6	18	BZ010100015	∅ 19.8 Ear type clamp	1
6	LJ040400003	GM70BT Solenoid valve	1	19	BZ020100006	M4*16 Big pan head cross screws	2
7	BZ020100008	M4*12 Big pan head cross screws	2	20	LJ080200008	GM50B water hose	1
8	LJ080200008	GM50B water hose	1	21	LJ010100280	50B solenoid valve fixed bracket	1
9	LJ010500016	1/2 outer wire × ∅ 14 direct	1	22	LJ020200027	Small round nut M20*1.5	1
10	LJ100100001	GM50B Water valve frame	1	23	LJ030100183	Insert 10 to 15 with wire elbow	1
11	LJ100100004	GM50B hollow gong	1	24	BZ010100013	∅ 12.8 Ear type clamp	2
12	BZ070400013	Coated iron pad	2	25	LJ080300003	Silicone tube 8*12*700	1
13	LJ110100003	GM50B Solution tank outlet filter	1	26	BZ010100007	∅ 22.6 Ear type clamp	3

BRUSH HEAD GROUP

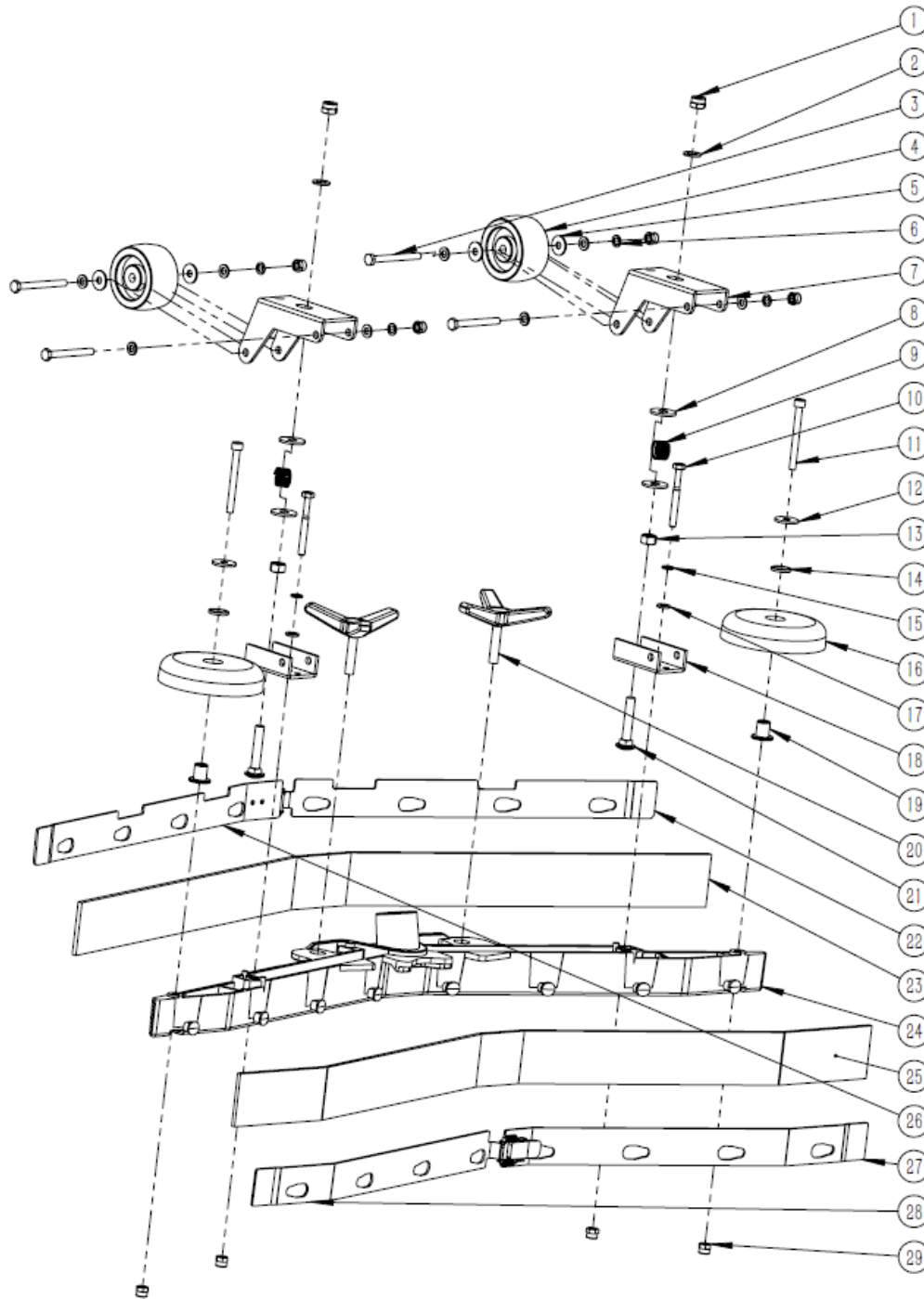


SEE NEXT PAGE

BRUSH HEAD GROUP

Ref.	Serail NO#	Desc.	QTY	Ref.	Serail NO#	Desc.	QTY
1	LJ070300004	GM50B Brush head cover (black)	1	19	BZ020300007	M6 Large flat mat	1
2	LJ040100005	GM50B Brush motor	1	20	LJ030100074	GM50B bumper wheel	1
3	BZ020400005	M8 spring washer	3	21	LJ030100068	GM50B bumper wheel liner outer \varnothing 20 x High 16mm	1
4	BZ020200011	M8 Self-locking nut	3	22	LJ010200220	GM50B Automatic brush buckle (aluminum with screw thread)	1
5	BZ020100037	M6*35 hex screw	2	23	LJ010200040	Motor connection copper liner \varnothing 20 * High	2
6	BZ020300009	M8 Flat mat	3	24	BZ020100061	M8*35 hex screw	2
7	LJ010200035	GM50B Forearm lever copper liner Outer \varnothing 20 x High 19mm	1	25	LJ010100021	GM50B motor mounting board	1
8	LJ030200018	GM50/GM50B Forearm lever cushion	1	26	BZ020300006	M4 Flat mat	12
9	BZ020100064	M8*40 hex screw	1	27	BZ020400004	M6 Flat mat	10
10	LJ030100070	GM50B Brush head cover liner Outer \varnothing 16x \varnothing 6x High 7mm	4	28	BZ020100035	M6*16 hex screw	7
11	LJ010100038	GM50B Dust cover bracket	1	29	LJ160100049	Brush warning label	1
12	BZ020300002	M4 Flat mat	8	30	BZ020200002	M4 Self-locking nut	2
13	BZ020200009	M6 Self-locking nut	3	31	BZ020400002	M4 Spring washer	2
14	BZ020100109	M6*16 Flat pan cross screws	6	32	BZ020100008	M4*12 Pan head cross	2
15	LJ030100078	GM50B Brush head buckles	1	33	LJ010100052	GM50B DC contactor mounting board	1
16	LJ050100046	Floor brush	1	34	LJ020800003	DC contactor	1
17	BZ020100022	M4*16 hex screw	4	35	BC020200010	M8 Large flat mat	3
18	LJ020100036	M6*30 hex screw	1				

SQUEEGEE GROUP



Ref.	Serail NO#	Desc.	QTY	Ref.	Serail NO#	Desc.	QTY
1	BZ020200011	M8 Self-locking nut	4	16	LJ030100074	GM50B bumper wheel	2
2	BZ020300010	M8 Large flat mat	3	17	BZ020300006	M6 Flat mat	6
3	BZ020100160	M8*55 hex screw	2	18	LJ010100046	GM50B Squeegee caster under bracket	2
4	BZ020800003	GM50B Squeegee caster	2	19	LJ030100068	GM50B Bumper wheel sleeve outer c 20 x high 16mm	2
5	BZ020300009	M8 Flat mat	4	20	LJ030100077	GM50B Squeegee 3-star knob (Sticky Pad)	2
6	BZ020400005	M8 Spring washer	2	21	BZ020100159	M8*45 Square neck screws	2
7	LJ010100045	GM50B Squeegee caster upper bracket	2	22	LJ010100050	GM50B retainer metal 3	1
8	BZ020300010	M8 Large flat mat	5	23	LJ030200015	GM50B Squeegee rear blade	1
9	LJ010300001	GM50B Squeegee caster bracket spring	2	24	LJ010100047	GM50B Squeegee frame	1
10	BZ020100120	M6*55 hex screw	4	25	LJ030200014	GM50B Squeegee front blade	1
11	BZ020100044	M6*55 Hex Scket	2	26	LJ010100051	GM50B retainer metal 4	1
12	BZ020300007	M6 Large flat mat	2	27	LJ010100048	GM50B retainer metal 1	1
13	BZ020200010	M8 Nuts	2	28	LJ010100049	GM50B retainer metal 2	1
14	BZ070400009	GM50B Squeegee caster shaft sleeve	2	29	BZ020200009	M6 Self-locking nut	6
15	BZ020400004	M6 Spring washer	4				