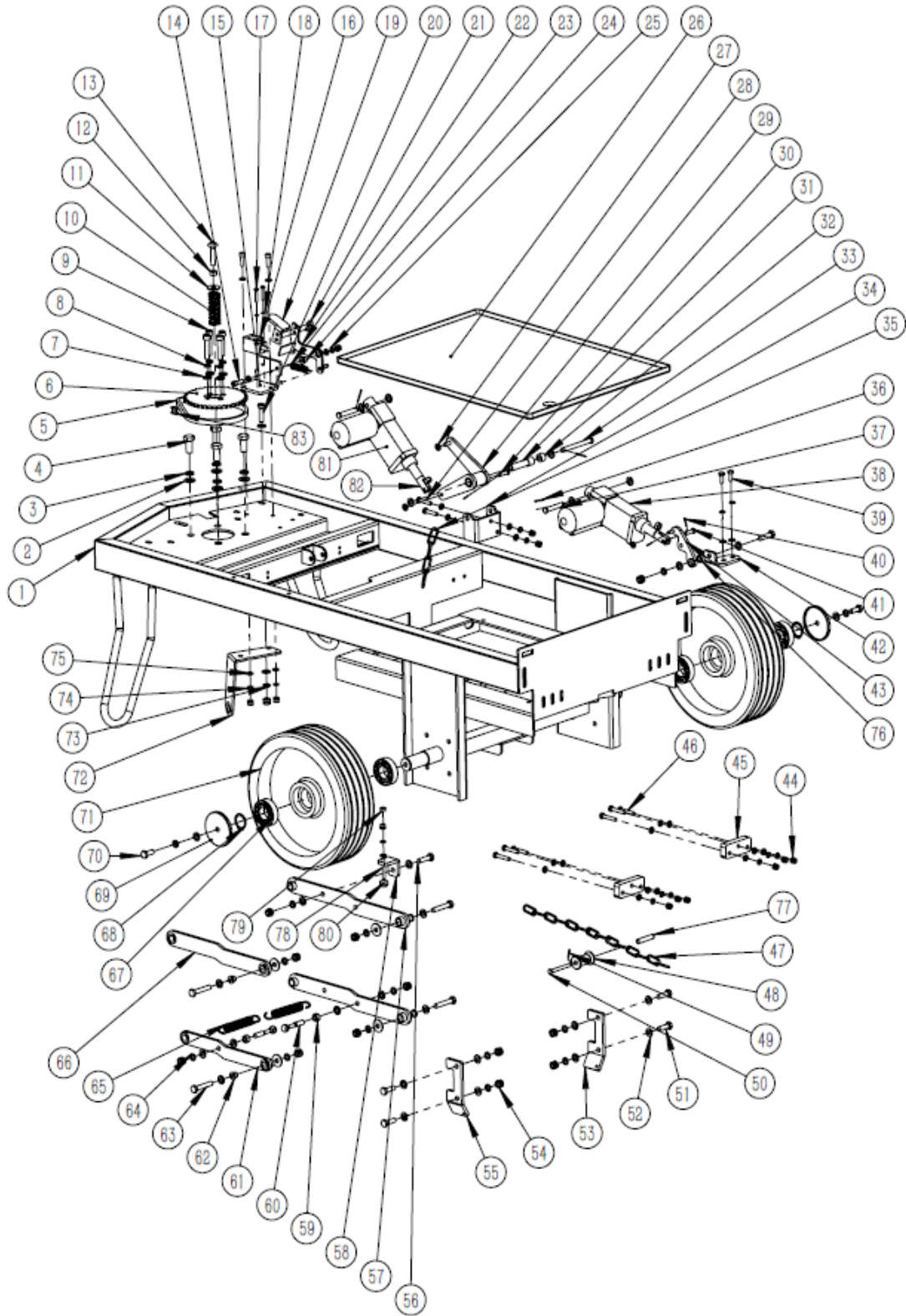


# BASE GROUP



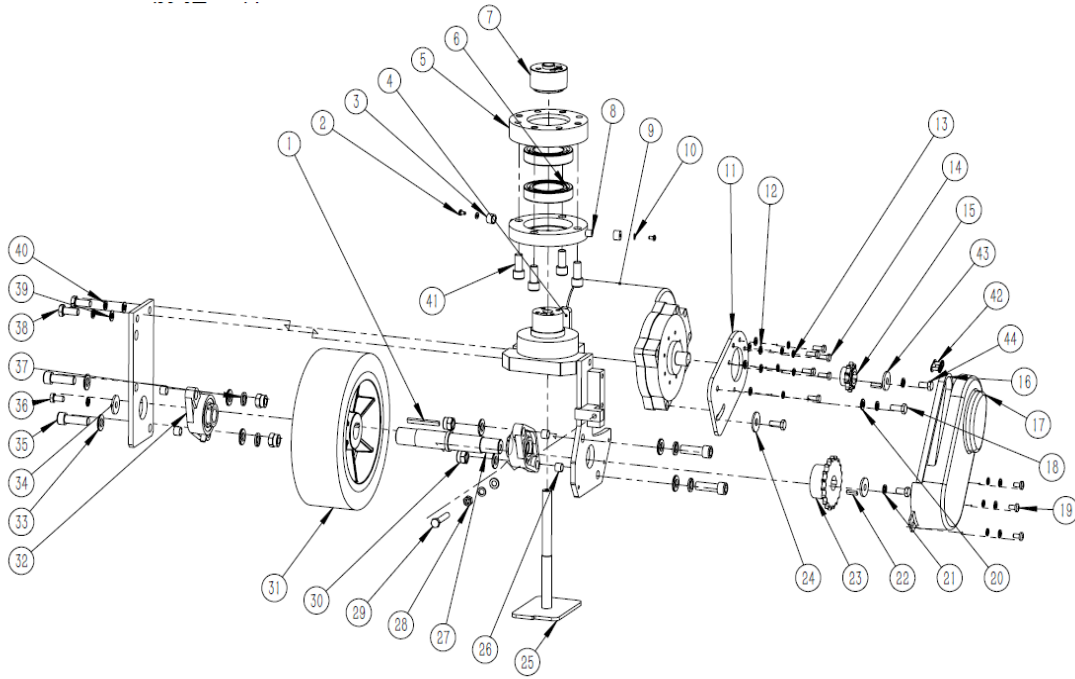
SEE NEXT PAGE

## BASE GROUP

Page 2

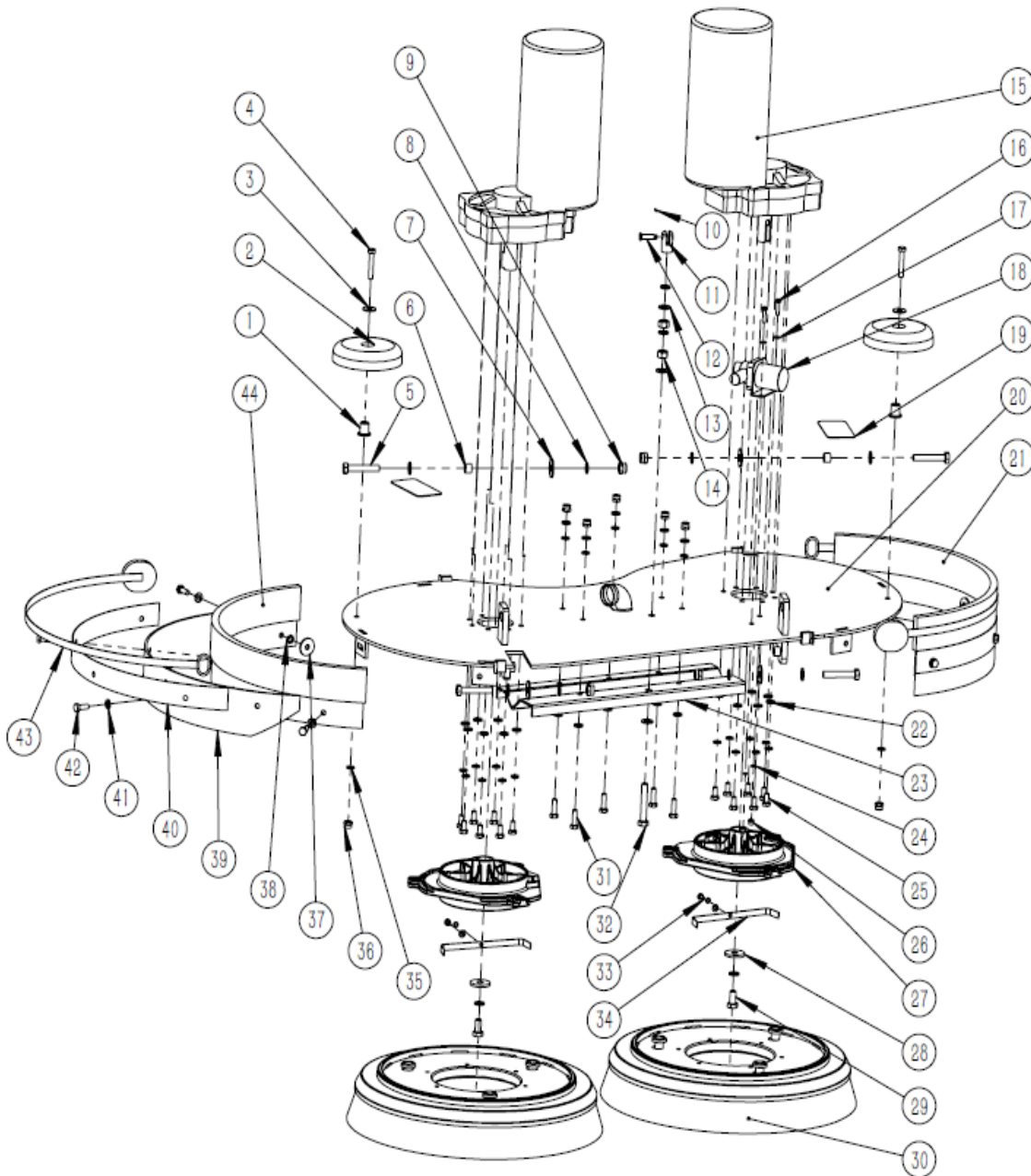
Ref.	Serail NO#	Desc.	QTY	Ref.	Serail NO#	Desc.	QTY
1	LJ010100182	GM110 Main frame	1	43	LJ010100202	Squeegee switch level	1
2	BZ020300013	M12 Flat mat (stainless steel)	4	44	BZ020200009	M6 Self-locking nut	12
3	BZ020400007	M12 Spring washer	4	45	LJ010100220	Hinge pad	2
4	BZ020100116	M12*25 Hex screw (8.8)	4	46	BZ020100037	M6*35 Hex screw	6
5	BZ110100008	3 points chain	1	47	LJ010100306	GM110 Squeegee chain	1
6	LJ010200181	Direction steering big sprocket	1	48	LJ010200190	Zipper pulley	1
7	BZ020300009	M8 Flat mat	M	49	BZ160100011	Open pin c 2X20	1
8	BZ020400005	M8 Spring washer	4	50	BZ160100015	Pin c 6X55	1
9	BZ020100092	M8*55 Hex socket	4	51	BZ020100057	M8*25 Hex screw	4
10	LJ010300025	Brake spring	1	52	BZ020300009	M8 Flat mat	29
11	BZ020300010	M8 Large flat mat	5	53	LJ010100356	Squeegee spring right hanging plate	1
12	BZ020200010	M8 Nuts	1	54	BZ020200011	M8 Self-locking nut	13
13	BZ020100070	M8*40 square neck screws	1	55	LJ010100355	Squeegee spring left hanging plate	1
14	BZ020100042	M6*25 Hex screw	1	56	BZ020100057	M8*25 Hex screw	1
15	LJ010100203	Drive foot pedal base	1	57	LJ010100296	110 Motor connecting rod right long-arm welder	2
16	LJ020100033	Proximity switch	1	58	LJ010100290	GM110 brush head balance adjustment block	1
17	BZ020100082	M4*25 Big pan head cross screw	2	59	BZ020200010	M8 Nuts	2
18	BZ020400002	M4 Flat mat	2	60	BZ020100146	M8*50 Slipknot bolts	2
19	LJ010100204	Drive pedal upper arm	1	61	LJ010100294	110 Motor connecting rod left short-arm welder	1
20	BZ020100078	M6*25 Hex socket	2	62	LJ010200238	Stop collar bushing	8
21	BZ020100093	M6*10 countersunk head hex socket	2	63	BZ020100062	M8*45 Hex screw	4
22	LJ010100205	Accelerator pedal under arm	1	64	BZ020200011	M8 Self-locking nut	14
23	LJ010300006	GM50B Squeegee spring	1	65	LJ010300038	GM110 Connection tension spring	2
24	LJ010200188	Accelerator pedal copper bushings	1	66	LJ010100295	110 Motor connecting rod left long-arm welder	1
25	BZ020400004	M6 Spring washer	12	67	BZ040100008	6205 Bearing	4
26	LJ030100163	GM110 Battery bracket	1	68	BZ030100012	Ø 25 clamps	2
27	BZ020300006	M6 Flat mat	1	69	LJ030100181	Rear wheel cap	2
28	BZ020100042	M6*25 Hex screw	2	70	BZ020100063	M8*20 Hex screw	2
29	LJ010100230	Brush head actuator arm welder	1	71	LJ030200064	GM110 Rear wheel	2
30	BZ160100017	Pin c 6X60	1	72	LJ010100207	Water valve connecting nod	1
31	LJ010200234	GM110 Brush Pushrod Copper Bushing	1	73	BZ020400005	M8 Spring washer	12
32	LJ010200028	GM50B battery support pad	0	74	BZ020400004	M6 Spring washer	2
33	BZ160100007	Pin c 8X80	1	75	BZ020300006	M6 Flat mat	27
34	LJ010100260	Mini brush head switch bracket	1	76	LJ010200223	Linear actuator lever copper liner	1
35	LJ010100288	GM110 Brush head chain	1	77	LJ010500073	Zipper pulley liner	1
36	BZ160100012	Open pin c 3X15	2	78	BZ021000004	GM50B Forearm adjust bolt M6*125 full wire	1
37	BZ160100001	Pin c 8X50	2	79	LJ030200162	Brush head balancing sleeve	1
38	LJ040700004	Linear actuator E1 white line	1	80	BZ120100001	GM50B M6x25 Star screw	1
39	BZ020100035	M6*16 Hex screw	2	81	LJ040700003	Linear actuator E1 blue line	1
40	BZ160100011	Open pin c 2X20	4	82	LJ010200184	Linear actuator head	2
41	BZ160100017	Pin c 6X60	1	83	BZ110100006	3 points chain point	1
42	LJ010100227	Squeegee switch braket	1				

## PRECURSOR GROUP



Ref.	Serail NO#	Desc.	QTY	Ref.	Serail NO#	Desc.	QTY
1	BZ130100001	6X6X50mm key	1	23	LJ010200202	Drive big sprocket	1
2	BZ020100010	M4*10 Big pan head cross screw	2	24	BZ020300010	M8 Large flat mat	1
3	LJ010200198	Steering cushion	2	25	LJ010100194	Brake plate	1
4	LJ010100215	Front wheel frame (with side panels)	1	26	LJ010200231	Drive bearing sleeve	4
5	LJ010200177	Steering bearing upper cover	1	27	LJ010200180	Drive wheel axle	1
6	BZ040100009	6010 Bearing	2	28	BZ020200010	M8 nuts	1
7	LJ010200178	Steering connection shaft	1	29	BZ020100064	M8*40 Hex screw	1
8	LJ010200176	Steering bearing under cover	1	30	BZ020200016	M12 Self-locking nut	4
9	LJ040100002	GM110 front drive motor	1	31	LJ030200065	GM110 Front wheel (red)	1
10	BZ020300003	M4 Large flat mat	2	32	BZ040200004	Bearing units UCFL205	2
11	LJ010100216	Drive motor mounting board	1	33	BZ020300013	M12 Flat mat(stainless steel)	8
12	BZ020300006	M6 Flat mat	9	34	LJ010100214	Front wheel axle cover	2
13	BZ020400004	M6 Spring washer	9	35	BZ020100085	M12*40 Hex socket(12.9)	4
14	BZ020100035	M6*16 Hex screw	6	36	BZ020100077	M8*16 Hex screw	1
15	LJ010200179	Drive small sprocket	1	37	BZ020400007	M12 Spring washer	4
16	BZ110100004	4 points chain	1	38	BZ020100141	M10*25 Hex screw (12.9)	2
17	LJ030300007	Mini front drive motor shield	1	39	BZ020300012	M10 Flat mat	4
18	BZ020100057	M8*25 Hex screw	2	40	BZ020400006	M10 Spring washer	2
19	BZ020100050	M6*12 Big pan head cross screw	3	41	BZ020100083	M12*25 Hex socket (12.9)	4
20	BZ020300009	M8 Flat mat	1	42	BZ110100007	4 points chain joint	1
21	BZ020400005	M8 Spring washer	5	43	BZ020300011	M8 Extra large flat mat	1
22	BZ130100003	6X6X30mm key	1	44	BZ020100200	M8*16 Hex screw(machining)	2

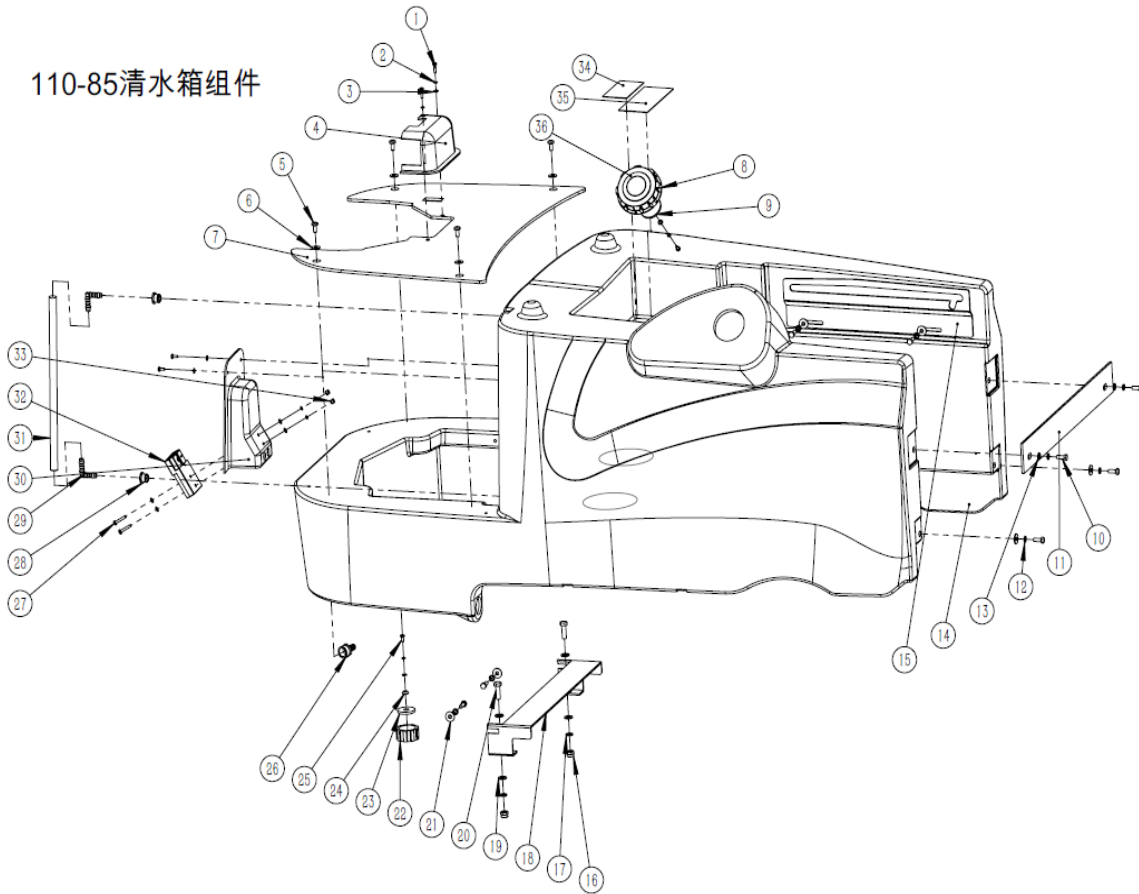
# BRUSH GROUP



Ref.	Serail NO#	Desc.	QTY	Ref.	Serail NO#	Desc.	QTY
1	LJ030100068	GM50B Bumper wheel liner outer c20x hig	2	23	LJ010100212	GM110BT70 water outlet cover	1
2	LJ030100074	GM50B Bumper wheel	2	24	BZ020400002	M4 Spring washer	4
3	BZ020300007	M6 Large Flat mat	2	25	BZ020100035	M6*16 Hex screw	14
4	BZ020100037	M6*35 Hex screw	2	26	BZ020400004	M6 Spring washer	2
5	BZ020100061	M8*35 Hex screw	4	27	LJ010100084	GM70BT automatic brush buckle	2
6	LJ010200050	70B forearm copper liner 12*8*6	2	28	BZ020300011	M8 Extra large flat mat	2
7	BZ020300010	M8 Large flat mat	4	29	BZ020100077	M8*16 Hex screw	2
8	BZ020400005	M8 Spring washer	8	30	LJ050100029	Floor brush	2
9	BZ020200011	M8 Self-locking nut	4	31	BZ020100035	M6*16 Hex screw	5
10	BZ160100011	Open pin c 2X20	1	32	BZ020100064	M8*40 Hex screw	1
11	LJ010200232	Brush head chain joint	1	33	BZ020100007	M4*16 Small pan head cross screw	2
12	BZ160100017	Pin c 6X20	1	34	LJ010300008	GM70BT brush buckle shrapnel	2
13	BZ020300009	M8 Flat mat	7	35	BZ020400004	M6 Spring washer	21
14	BZ020200010	M8 nuts	2	36	BZ020200009	M6 Self-locking nut	7
15	LJ040100024	GM110BT85 brush motor	2	37	LJ030200003	GM70BT rubber silicone pad	8
16	BZ020100014	M4*20 Big pan head cross screw	2	38	BZ020200018	GM70BT M6 strap nuts	8
17	BZ020300002	M4 Flat mat	6	39	LJ030200061	GM85BT brush waterproof rubber	2
18	LJ040400003	GM70BT solenoid valve	1	40	LJ010100178	GM85BT rubber stainless steel retainer	2
19	LJ160100048	Brush head warning label	2	41	BZ020300007	M6 Large flat mat	10
20	LJ010100219	GM110BT85 motor mounting board	1	42	BZ020100035	M6*16 Hex screw	8
21	LJ130300001	GM70BT motor mounting board strap	1	43	LJ010100270	GM110BT85 side rubber pressing	2
22	BZ020300006	M6 Flat mat	24	44	LJ130300001	GM70BT motor mounting board strap	1

## SOLUTION TANK GROUP

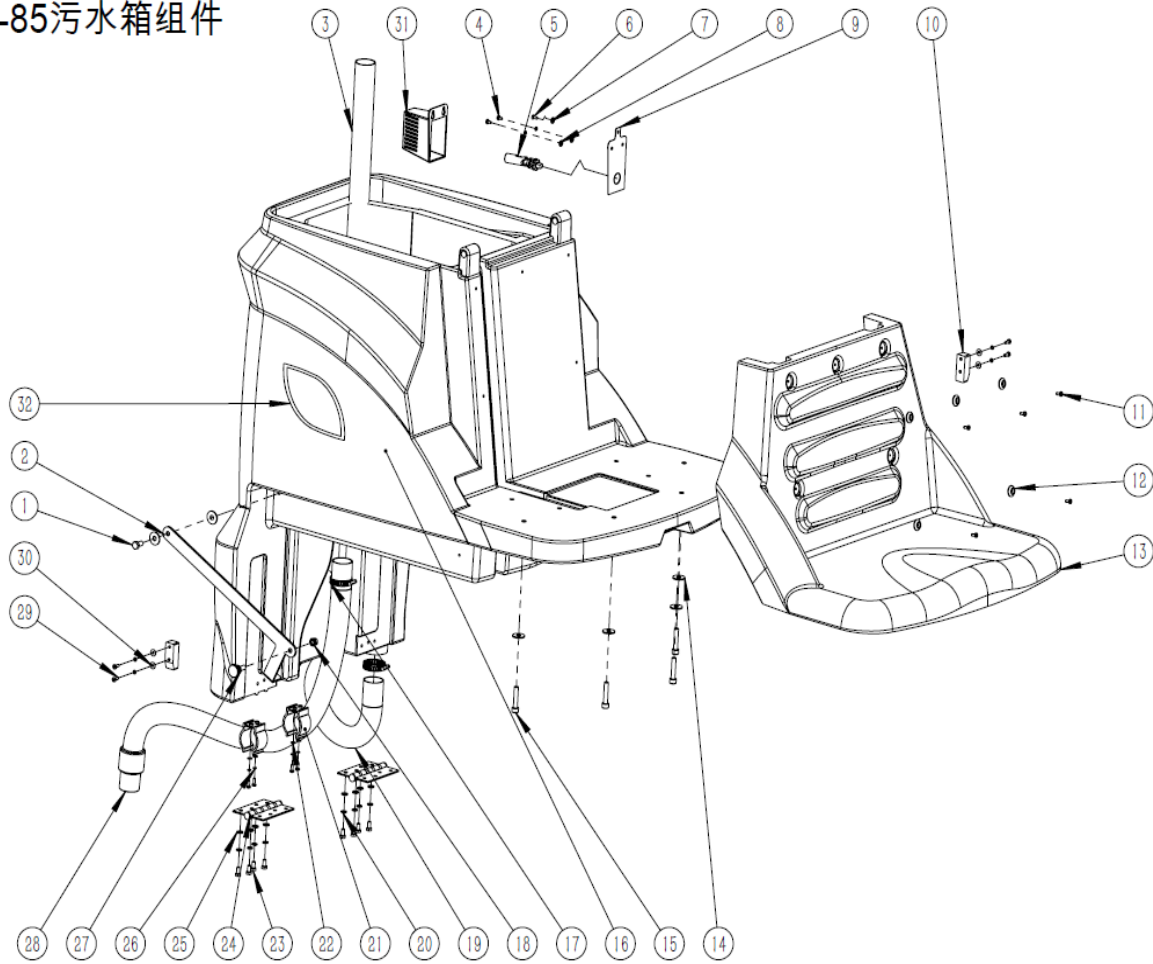
### 110-85清水箱组件



Ref.	Serail NO#	Desc.	QTY	Ref.	Serail NO#	Desc.	QTY
1	BZ020100008	M4*12 Big pan head cross screw	2	19	BZ020300009	M8 Flat mat	4
2	BZ020400002	M4 Spring washer	6	20	BZ020100057	M8*25 Hex screw	2
3	BZ020300002	M4 Flat mat	10	21	BZ020300007	M6 Large flat mat	4
4	LJ030300001	Brake shield	1	22	LJ030100067	Solution tank outlet plug	1
5	BZ020100185	M6*16 Small pan head cross screw	4	23	LJ030200012	GM50B Solution tank plug gasket	1
6	LJ030100150	Foot pedal plastic mat	4	24	LJ030200012	GM50B Solution tank plug gasket	0
7	LJ010100211	Foot pedal (pattern aluminum)	1	25	BZ020100010	M4*10 Big pan head cross screw	4
8	LJ030100202	Outer wire solution tank cover	1	26	LJ010500016	1/2 outer wire × c 14 direct	1
9	LJ030100203	Outer wire solution tank cover baffle	1	27	BZ020100133	M4*30 Big pan head cross screw	2
10	BZ020100139	M6*14 Hex screw(stainless steel)	8	28	LJ030200066	Transparent tube elbow sheath	2
11	LJ010100195	Solution water tank support board	1	29	LJ030100153	Transparent tube elbow	2
12	BZ020400004	M6 Spring washer	8	30	LJ030300002	Charger connector plastic cover	1
13	BZ020300007	M6 Large flat mat	4	31	LJ080200012	GM110 transparent tube	1
14	LJ070100019	GM110 Solution tank (grey)	1	32	LJ021000021	GM110 Charger connector	1
15	LJ010100189	Tank slide board	1	33	BZ020200005	Semi-round nuts	2
16	BZ020200011	M8 self-locking nut	2	34	LJ160100070	Battery warning label (small)	1
17	BZ020400005	M8 Spring washer	2	35	LJ160100069	Battery warning label (big)	1
18	LJ010100190	Foot pedal board bracket	1	36	LJ030200173	Outer wire solution tank waterproof gasket	1

## RECOVERY TANK GROUP

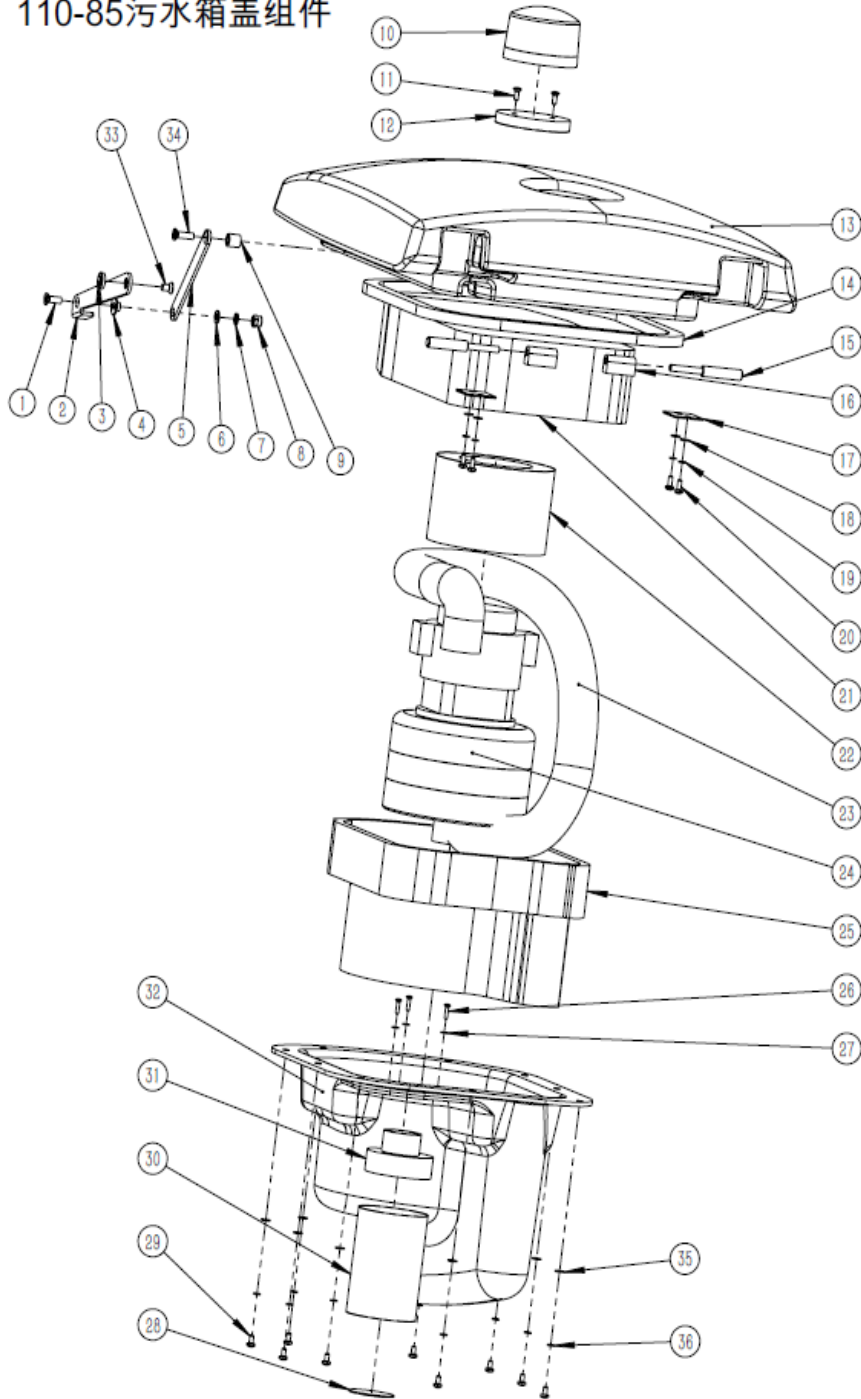
### 110-85污水箱组件



Ref.	Serail NO#	Desc.	QTY	Ref.	Serail NO#	Desc.	QTY
1	BZ020100077	M8*16 Hex screw	1	17	BZ010100005	ç 27-51 Adjustable ear type clamp	2
2	LJ010100188	Tank support bar	1	18	BZ020200011	M8 self-locking nut	1
3	LJ010200189	GM110 PVC waste water tube	1	19	LJ080100014	GM110 Drain hose	1
4	BZ020100008	M4*12 Big pan head cross screw	2	20	BZ020400004	M6 Spring washer	8
5	LJ020600003	GM50B Waste water sensor (small)	1	21	LJ030100075	Drain hose bracket	2
6	BZ020100019	ST4*12 Pan head cross self tapping screw	1	22	BZ020300002	M4 Flat mat	4
7	BZ020300005	M5 Large flat mat	1	23	BZ020100038	M6*12 Hex screw	8
8	BZ020400002	M4 Spring washer	2	24	BZ130200001	GM110 Solution tank hinge	2
9	LJ010100238	Sensor mounting plate	1	25	BZ020300006	M6 Flat mat	8
10	LJ030100152	Recovery tank block	2	26	BZ020400002	M4 Spring washer	10
11	BZ020100010	M4*10 Big pan head cross screw	5	27	LJ010200186	Tank slide shaft	1
12	LJ030100151	Seat plastic mat	6	28	LJ080100015	GM110/GMmini vacuum hose	1
13	LJ030200063	GM110 Seat (black)	1	29	BZ020100008	M4*12 Big pan head cross screw	8
14	BZ020300010	M8 Large flat mat	6	30	BZ020300003	M4 Large flat mat	4
15	BZ020100054	M8*40 Hex socket	4	31	LJ030100061	GM50B sensor cover	1
16	LJ070200014	GM110 Recovery tank(grey)	1	32	LJ160100003	Machine model label	2

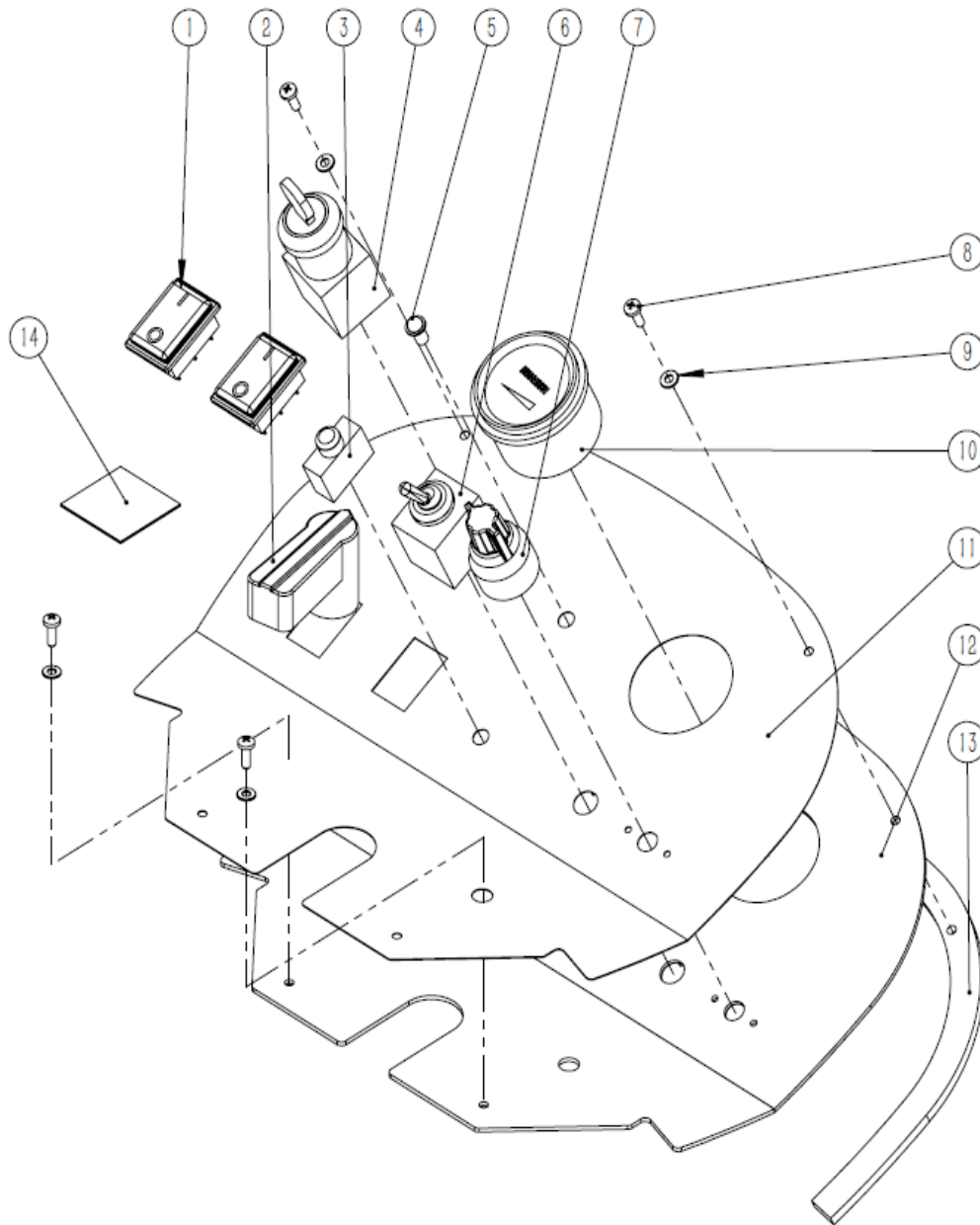
RECOVERY TANK BACK COVER GROUP

110-85污水箱盖组件



Ref.	Serail NO#	Desc.	QTY	Ref.	Serail NO#	Desc.	QTY
1	BZ020100109	M6*16 Flat head cross screw	1	19	BZ020400002	M4 Spring washer	0
2	LJ010100199	Rack cover under support bar	1	20	BZ020100010	M4*10 Big pan head cross screw	4
3	LJ010200225	GM110 Back cover under support copper liner	1	21	LJ120200008	Gmmini back cover sponge D4 total 4 pcs	1
4	LJ010200038	GM50B Recovery tank main handle copper liner outer $\phi$ 16 × high 6mm	1	22	LJ030200067	GM110 motor sheath	1
5	LJ010100200	Back cover upper support bar	1	23	LJ080100016	Motor suction telescopic tube	1
6	BZ020300009	M8 Flat mat	1	24	LJ040200011	GM110B 3-layer vacuum motor	1
7	BZ020300007	M6 Large flat mat	1	25	LJ120200009	Motor cover sponge B7 total 7 pcs	1
8	BZ020200009	M6 Self-locking nut	1	26	BZ020100100	ST3.5*13 Pan head cross self tapping screw	3
9	LJ010200224	GM110 rear cover under support bar copper bush	1	27	BZ020300001	M3 Flat mat	3
10	LJ021300002	Reversing warning lamp	1	28	LJ160100046	Recovery tank maintenance warning label	1
11	Same as above	M4 × 12 self-tapping screw	2	29	BZ020100105	M5*12 Pan head cross screw	9
12	Same as above	Reversing warning lamp base	1	30	LJ110200005	GM110 Waste water filter	1
13	LJ070300023	GM110 back cover (grey)	1	31	LJ030100182	Filter base	1
14	LJ130200009	Motor cover shaped seal	1	32	LJ030300005	Gmmini motor shield	1
15	LJ010200182	110 Recovery tank hinge shaft	2	33	BZ020100147	M6*10 flat head cross screw	1
16	LJ030100185	Recovery tank hinge shaft positioning block	2	34	BZ020100137	M6*20 Flat head cross screw	1
17	LJ010100193	110 Recovery tank hinge shaft retainer	2	35	BZ020300004	M5 Flat mat	9
18	BZ020300002	M4 Flat mat	4	36	BZ020400003	M5 Spring washer	9

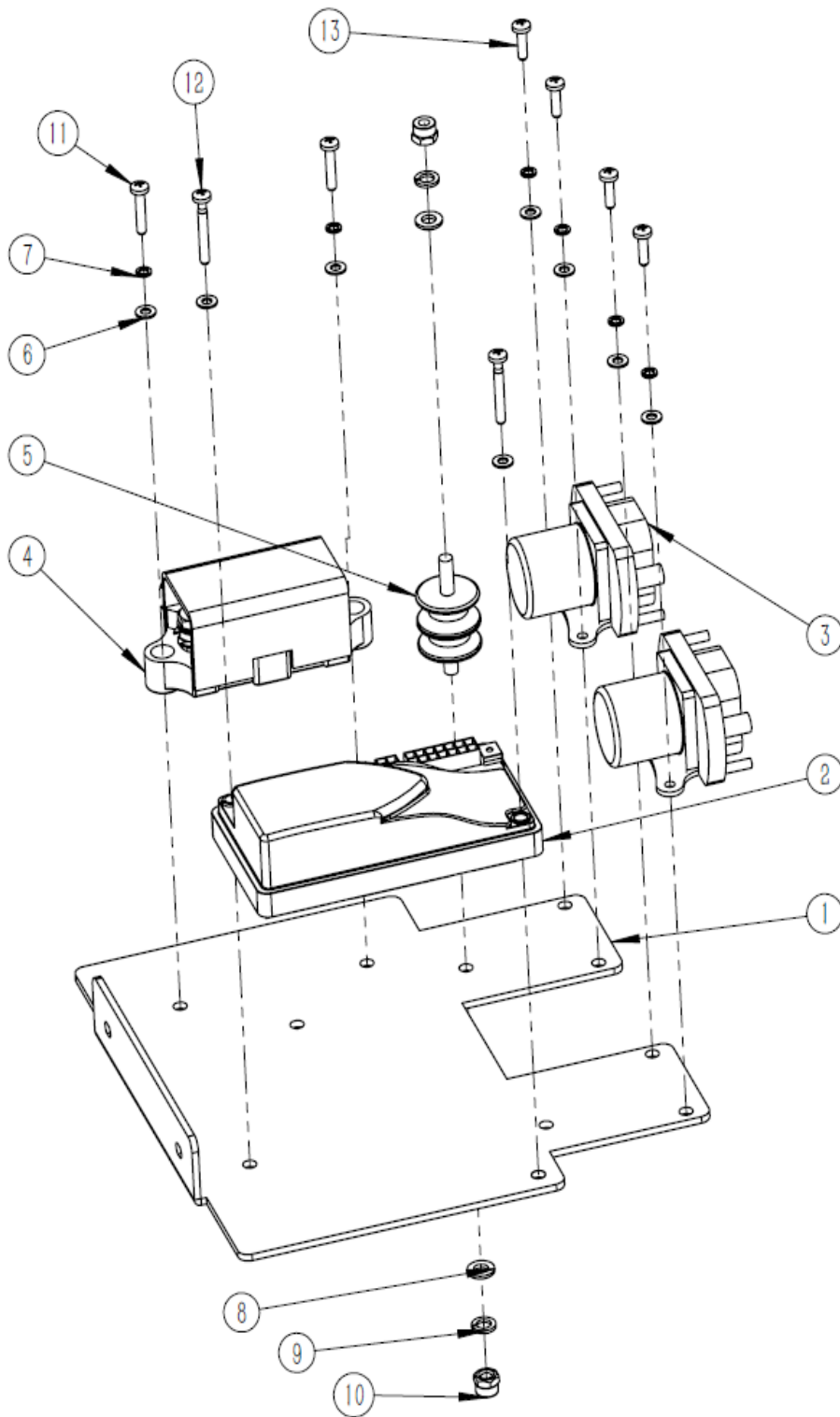
## CONTROL PANEL GROUP



Ref.	Serail NO#	Desc.	QTY
1	LJ020100026	GM110 Brush & suction power switch	2
2	BZ060100005	GM110 Water valve knob	1
3	LJ020300008	5A protector (with waterproof cap)	1
4	LJ020100005	GM50B Main power switch	1
5	LJ021300001	Fault indicator	1
6	LJ020100027	GM110 Direction switch	1
7	BZ060100002	GM70BT speed switch knob	1
8	BZ020100008	M4*12 Big pan head cross screw	4
9	BZ020300002	M4 Flat mat	4
10	LJ020500003	GM70BT battery scale 24V	1
11	LJ160200005	GM110 control panel label	1
12	LJ010100198	GM110 contorl panel	1
13	LJ120100005	GM110 control panel gasket	1
14	LJ160200046	QR code label	2

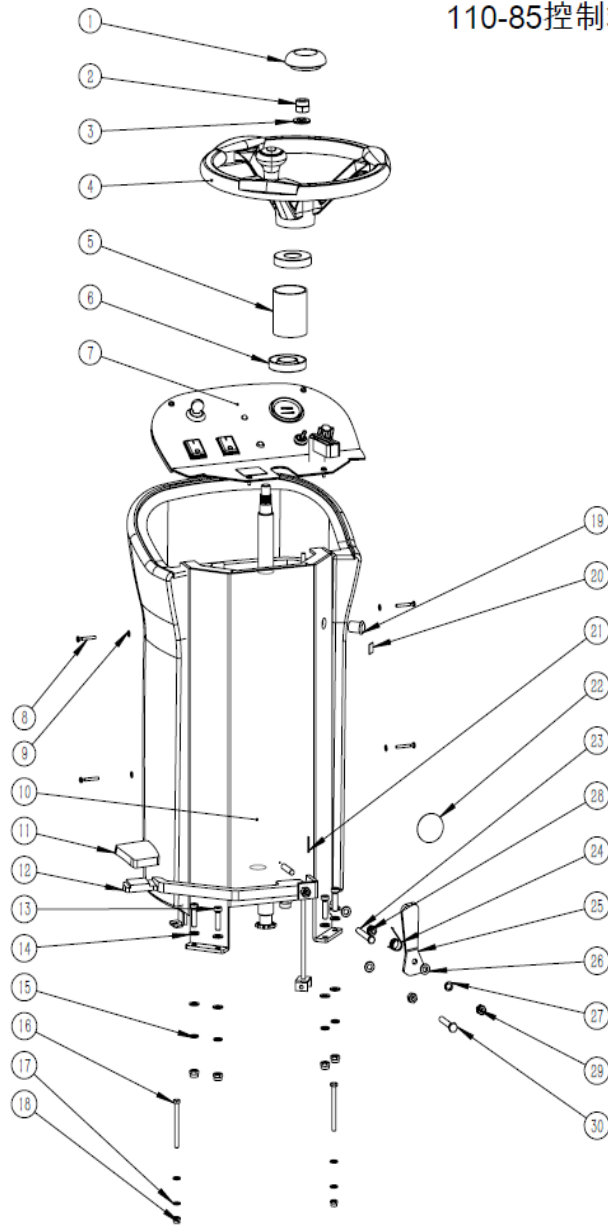


## ELECTRIC CONTROL GROUP



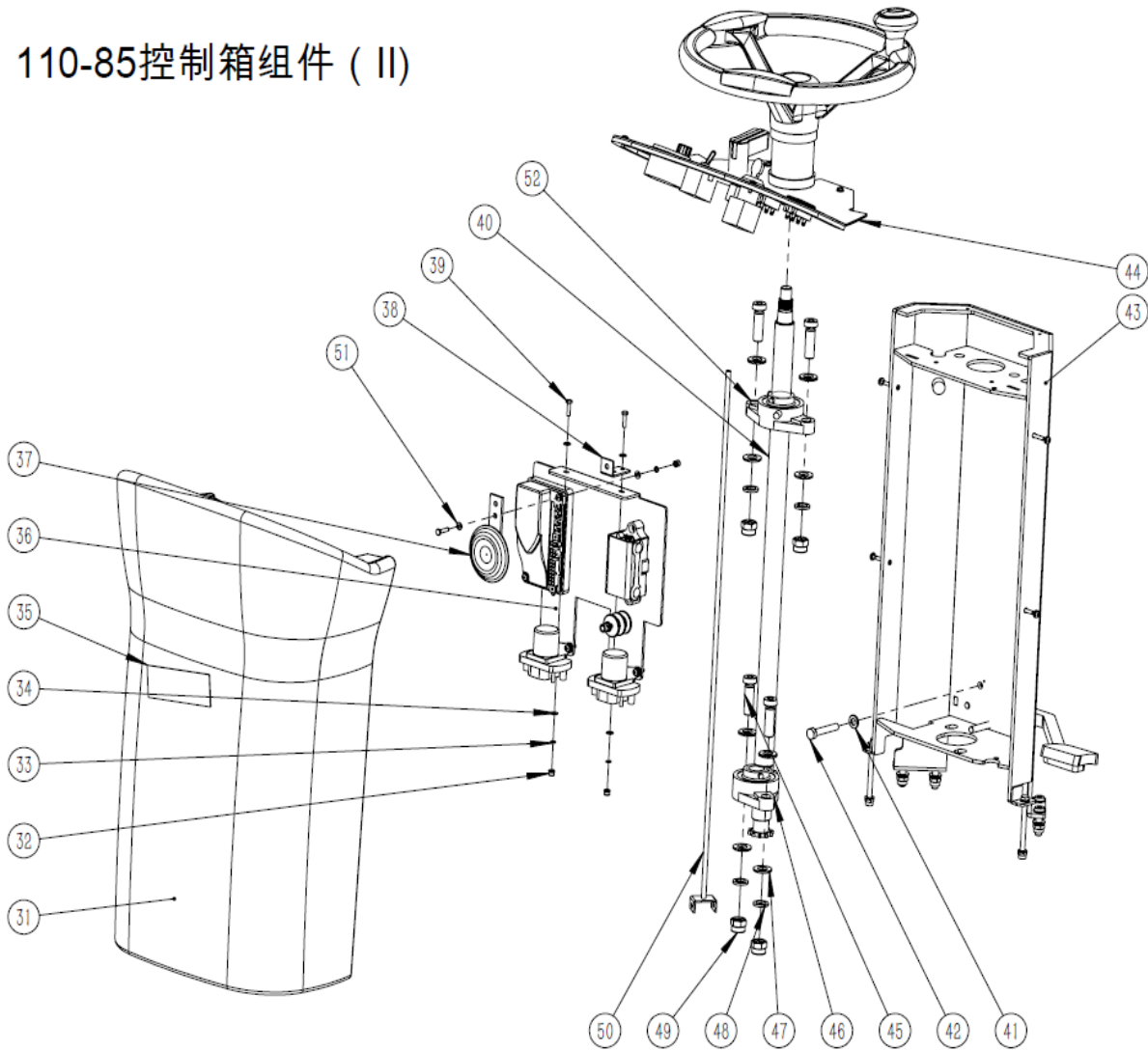
Ref.	Serail NO#	Desc.	QTY
1	LJ010100197	Electrical installation board	1
2	LJ020200008	Curtis board	1
3	LJ020800003	DC contactor	2
4	LJ020300001	100A Fuse box	1
5	LJ020800002	Insulator	1
6	BZ020300002	M4 Flat mat	8
7	BZ020400002	M4 Spring washer	6
8	BZ020300006	M6 Flat mat	2
9	BZ020400004	M6 Spring washer	2
10	BZ020200009	M6 self-locking nut	2
11	BZ020100014	M4*20 Big pan head cross screw	2
12	BZ020100133	M4*30 Big pan head cross screw	2
13	BZ020100164	M4*14 Big pan head cross screw	4

## 110-85控制箱组件 ( I)



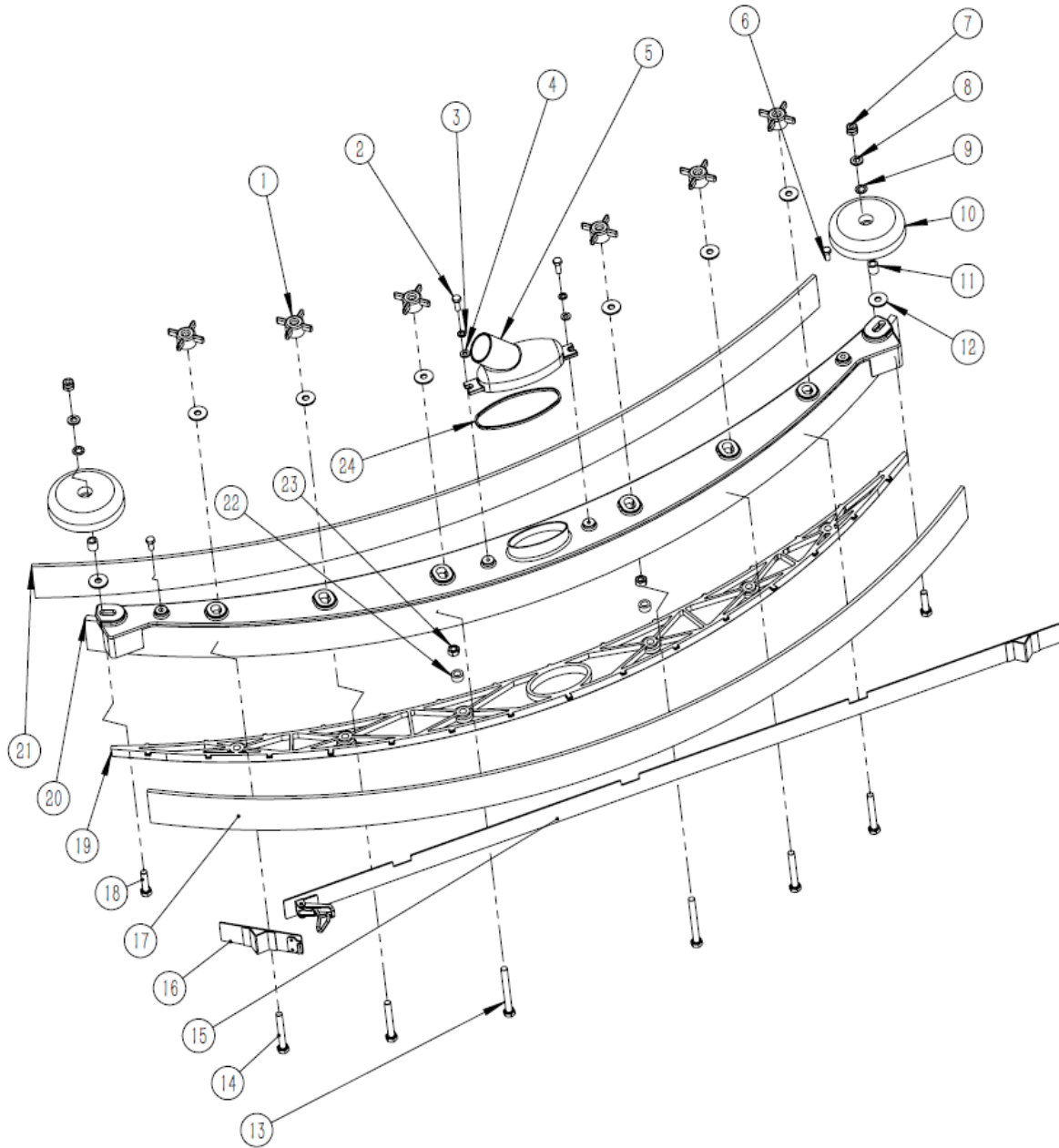
Ref.	Serail NO#	Desc.	QTY
1	LJ030100154	Steering wheel cover	0
2	BZ020200026	M14 Self-locking nut	1
3	BZ020300021	M14 Flat mat	1
4	LJ030100154	Steering wheel	1
5	LJ080100008	Steering wheel sheath	1
6	LJ030100149	Directional lever cover	2
7	BC06021008	GM110 Control panel components	1
8	BZ020100133	M4*30 Big pan head cross screw	4
9	BZ020300002	M4 Flat mat	10
10	LJ010100183	Steering wheel main support	1
11	BZ100100002	GM50B foot brake cover	1
12	LJ010100192	Brake arm	1
13	BZ020100079	M8*25 Hex socket	4
14	BZ020300009	M8 Flat mat	4
15	BZ020400005	M8 Spring washer	4
16	BZ020100089	M6*70 Hex screw	2
17	BZ020400004	M6 Spring washer	4
18	BZ020200009	M6 self-locking nut	2
19	LJ020100029	Horn switch	1
20	LJ160100017	GM110 horn label	1
21	BZ160100011	Open pin c 2X20	1
22	LJ160100018	GM110 brake stickers	1
23	BZ160100010	Pin c 6X40	1
24	LJ010300029	Brake spring	1
25	LJ010100191	Brake	1
26	BZ020300009	M8 Flat mat	8
27	BZ020400005	M8 Spring washer	1
28	BZ020200010	M8 nuts	1
29	BZ020200011	M8 self-locking nut	5
30	BZ020100059	M8*50 Hex screw	1

## 110-85控制箱组件 ( II)



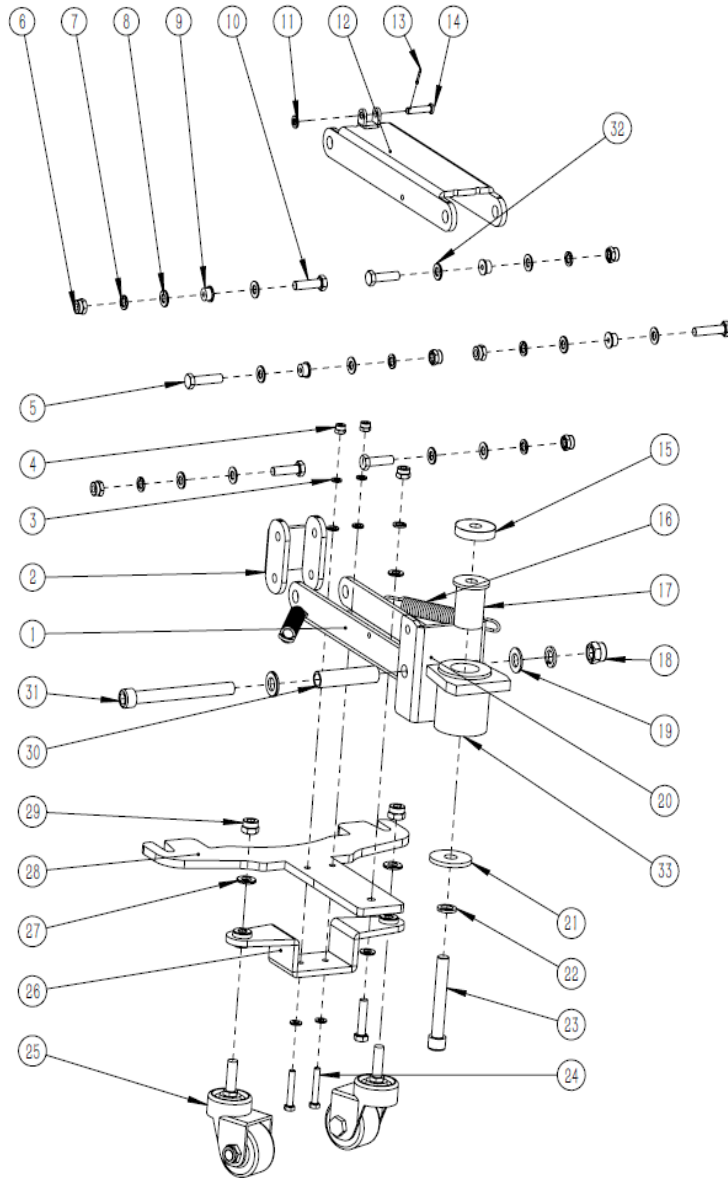
Ref.	Serail NO#	Desc.	QTY
31	LJ070300024	GM110 steering wheel plastic cover (grey)	1
32	BZ020200004	M4 Self-locking nut	3
33	BZ020400002	M4 Spring washer	3
34	BZ020300002	M4 Flat mat	5
35	LJ160100009	GAOMEI logo	1
36	BC06021009	Electronical mounted mounting board components	1
37	LJ021400001	GM110 Horn	1
38	LJ010100231	Horn bracket	1
39	BZ020100022	M4*16 Hex screw	3
40	LJ010200185	Steering wheel shaft	1
41	BZ020300009	M8 Flat mat	1
42	BZ020100061	M8*35 Hex screw	1
43	LJ010100183	Steering wheel main support	1
44	BC06021008	GM110 Control panel components	1
45	BZ020100085	M12*40 Hex socket (12.9)	4
46	BZ040200004	Bearing units UCFL205	2
47	BZ020300013	M12 Flat mat (stainless steel)	8
48	BZ020400007	M12 Spring washer	4
49	BZ020200016	M12 self-locking nut	4
50	LJ010100206	Water valve connecting rod	1
51	BZ020300003	M4 Large flat mat	1
52	LJ010200231	Drive bearing sleeve	2

SQUEEGEE GROUP



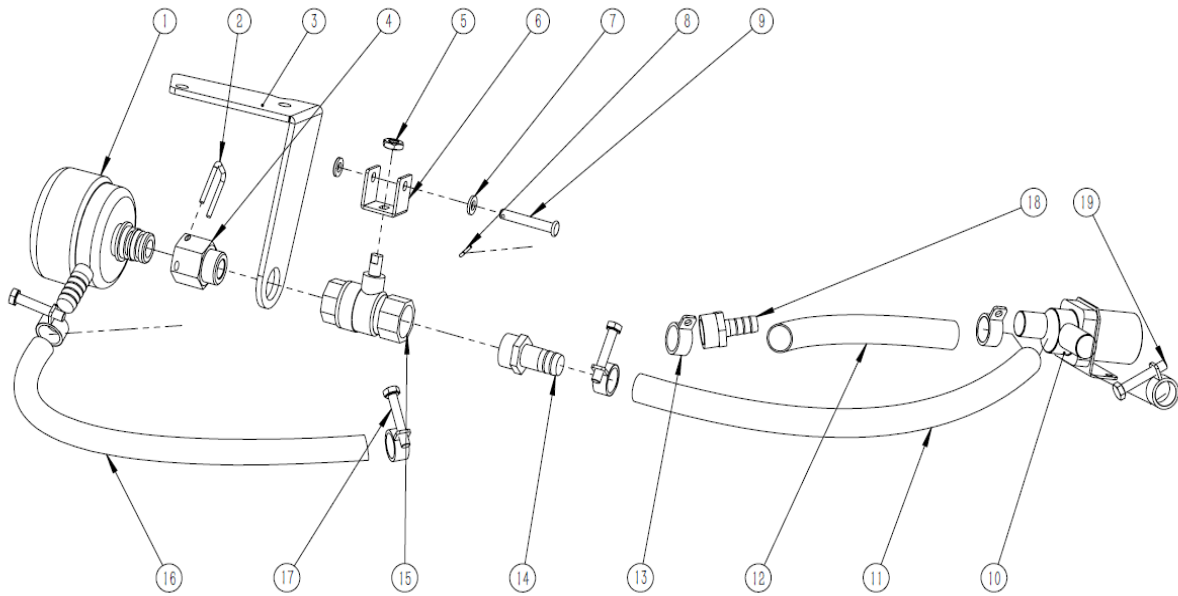
Ref.	Serail NO#	Desc.	QTY	Ref.	Serail NO#	Desc.	QTY
1	LJ030100196	M8 Small quadrilateral nuts	6	13	BZ020100178	M8*80 Hex screw	2
2	BZ020100035	M6*16 Hex screw	2	14	BZ020100065	M8*60 Hex screw	4
3	BZ020400004	M6 Spring washer	2	15	LJ010100338	70 Cast aluminum squeegee large retainer	1
4	BZ020300006	M6 Flat mat	2	16	LJ010100337	70 Cast aluminum squeegee small retainer	1
5	LJ030100198	Squeegee water outlet joint	1	17	LJ130200174	Squeegee rear blade	1
6	BZ020100038	M6*12 Hex screw	2	18	BZ020100060	M8*30 Hex screw	2
7	BZ020200011	M8 self-locking nut	2	19	LJ030100211	Squeegee plastic gland	1
8	BZ020300009	M8 Flat mat	2	20	LJ010200257	Cast aluminum squeegee	1
9	BZ020500001	C 14 wave pad	2	21	LJ130200175	Squeegee front blade	1
10	LJ030100074	GM50B Bumper wheel	2	22	LJ010200278	Squeegee cushion column	2
11	LJ010200247	Squeegee bumper wheel bushing	2	23	BZ020200010	M8 nuts	2
12	BZ020300011	M8 Extra flat mat	8	24	LJ030200168	Squeegee water outlet joint gasket	1

**SQUEEGEE LIFT GROUP**



Ref.	Serail NO#	Desc.	QTY
1	LI010100286	GM110 Squeegee connector welder	1
2	LI010100293	Squeegee adjust bracket	1
3	BZ020400004	M6 Spring washer	2
4	BZ020200009	M6 self-locking nut	2
5	BZ020100064	M8*40 Hex screw	2
6	BZ020200011	M8 self-locking nut	7
7	BZ020400005	M8 Spring washer	7
8	BZ020300010	M8 Large flat mat	6
9	LI010200040	GM50B motor connection copper liner outer $\varnothing$ 20 x high 8mm	6
10	BZ020100060	M8*30 Hex screw	5
11	BZ020300006	M6 Flat mat	5
12	LI010100224	GM110 Squeegee upper connection welder	1
13	BZ160100011	Open pin $\varnothing$ 2X20	1
14	BZ160100009	Pin $\varnothing$ 2X25	1
15	LI010200283	Squeegee shaft pad	1
16	LI010300027	GM110 Squeegee pressure spring	2
17	LI010200281	Squeegee shaft copper bushing	1
18	BZ020200016	M12 Self-locking nut	1
19	BZ020300013	M12 Flat mat (stainless steel)	2
20	LI010200299	Squeegee shaft die casting part	1
21	BZ020300029	M12 Large flat mat	1
22	BZ020400007	M12 Spring washer	2
23	BZ020100182	M12*80 Hex socket (12.9)	1
24	BZ020100036	M6*30 Hex screw	2
25	BZ080100009	Squeegee pressure adjust caster (M10X35)	2
26	LI010100359	Squeegee caster bracket welder	1
27	BZ020300012	M10 Flat mat	2
28	LI010100292	GM110 Squeegee fixed bracket	1
29	BZ020200014	M10 self-locking nut	2
30	LI010200282	Squeegee connection copper sleeve	1
31	BZ020100192	M12*120 Hex socket (12.9)	1
32	BZ020300009	M8 Flat mat	8
33	LI010200280	Squeegee shaft copper pad	1

## SOLENOID VALVE GROUP



Ref.	Serail NO#	Desc.	QTY
1	LJ110100007	Solution water filter	1
2	LJ010300021	Filter clamps	1
3	LJ010100201	Water switch bracket	1
4	LJ010200187	Filter connector	1
5	BZ020200010	M8 self-locking nut	1
6	LJ010100207	Water valve connector bracket	1
7	BZ020300006	M6 Flat mat	1
8	BZ160100011	Open pin 2 × 10	1
9	BZ160100017	Pin 6×20	1
10	LJ040400003	Solenoid valve 24V	1
11	LJ080500001	Steel wire pipe 1250mm	1
12	LJ080200008	Solution water pipe 130mm	1
13	BZ010100015	∅ 19.8 ear type clamp	2
14	LJ010500084	1/2 Outer wire ∅ 16 direct	1
15	LJ100100001	GM water valve main frame	1
16	LJ080200008	Solution water pipe 14 × 445mm	1
17	BZ010300002	22 Wire clamps	3
18	LJ010200079	3/8 plug 14 direct	1
19	BZ010300001	25 Wire clamp	1